



AGRICULTURAL
UPDATE

JUNE 2024



FLOOD RECOVERY FUND - UPDATE

At the time of writing, we await the release of the second phase of the Flood Recovery Fund, following the release and then prompt withdrawal of round 1 in April. The Fund has been boosted with an additional £50 million, meaning the grants will be offered to wider land holdings than initially announced which have been affected by river flooding due to the extreme rainfall. Grants will range between £2,895 and £25,000 per holding.

RPA are using mapping data to determine the land close to rivers that has been flooded. Rainfall data will be used to establish any other areas across the country that have experienced exceptional rainfall, deemed to be more than 70% higher than normal, over the winter period.

We anticipate the application process to be straightforward and those who receive a grant do not need to evidence the damage caused or the costs incurred.

Parties eligible for the grant should automatically receive notification from RPA when the scheme is available, but do make sure that your contact details are up to date with RPA to ensure smooth delivery.

FORTHCOMING COLLECTIVE MACHINERY AUCTION

The Show Field, Brook Farm, Great Somerford, Wiltshire,
SN15 5JA

COLLECTIVE AUCTION OF AGRICULTURAL MACHINERY & EQUIPMENT

Wednesday, 26th June - Entries are Invited

Further information including lots entered will be available
on our website nearer the sale date.



BASIC PAYMENT SCHEME - PAYMENTS UPDATE

Defra has recently announced that to assist with cashflow, the second payment (balancing payment) of the delinked payment in 2024, previously known as BPS, will be brought forward this year to September, from December. The first payment will continue to be made on or around 1st August.

Countryside Stewardship payments are unlikely to be affected by this amendment, with payments under that scheme due to be released from 1st December.



SUSTAINABLE FARMING INCENTIVE - UPDATE

Since our “hot off the press” article last month announcing the headline release of an additional 50+ options under SFI, it has since been confirmed that there will be no further release of information from Defra regarding the rollout until after the General Election. With the dissolution of Parliament, it is to be expected that information regarding SFI will be released later in the Summer if not later in the year once a government has been formed.

Following the announcement from Defra above, as of 10th June 2024, it is no longer possible to open a SFI application. Those who have previously opened an application prior to this date will have 60 days to submit the application before it will be deleted from the system. This development will be concerning to those planning to enter the scheme in line with the arable cropping year from September or those whose existing HLS scheme expires in August or September. Frustratingly, when the system reopens and detail does become available, it may then clash with haymaking or harvest.

For those wishing to apply for the ‘Expanded SFI Offer’, an Expression of Interest form needs to be completed. Following which, the RPA will invite you to apply for the scheme. It would be sensible to do this.

In order to be as prepared as possible for the release, we recommend using June to review your land details on RPA online, including checking boundaries, land covers and cropping plans, to make sure that you can move quickly once the scheme is fully implemented.

For further information on your SFI options, please contact a member of the Agricultural Team.



AUCTION HOUSE

You know we sell tractors, trailers and toppers, but did you know that we have a saleroom that sells tables, treenware and tantalus and so much more in our monthly sales at our auction room on the edge of Cirencester.

As well as sale valuations, we can also assist you with insurance and Inheritance Tax valuations as required.

So, if you are looking to empty the attic or furnish that holiday let or your own home we can help.

Call us on 01285 646050 or email us at fineart@mooreallen.co.uk for more information.

A recent farmhouse attic find was this lovely Queen Anne mirror selling for £2200 (hammer). The arts and crafts table included in our sale in June came out of the back of a horse box
box
Est £500-800.



COMMERCIAL SALES

We are pleased to be offering the freehold of the Twelve Bells Public House in Cirencester for sale. The pub is offered as a Going Concern with the possibility of reconversion to residential (STP).



COMMERCIAL LETTINGS

We have also recently brought to the market approximately 2 acres of commercial yard space near Crudwell.

If you are interested in either of these properties, or have property you would like to sell or let, then please contact Richard Dell on 01285 648112.



**MOORE ALLEN
& INNOCENT**

PARK FARM, WESTROP,
NEAR CORSHAM, SN13 9QE

DISPERSAL SALE

of
FARM MACHINERY, BUILDER'S
EQUIPMENT & RELATED
SUNDRIES



which Moore Allen & Innocent LLP
upon instructions received from Mr. T. Waldron

WILL SELL BY AUCTION

on

FRIDAY, 28TH JUNE 2024

Starts at 2.30 p.m. sharp

33 Castle Street, Cirencester, Gloucestershire, GL7 1QD
01285 648103 farmsales@mooreallen.co.uk mooreallen.co.uk

RURAL PROPERTIES CURRENTLY FOR SALE



**Tyning Villa Farm,
Frampton Mansell**

Guide Price: £1,300,000
For sale as a whole or in 2 lots.

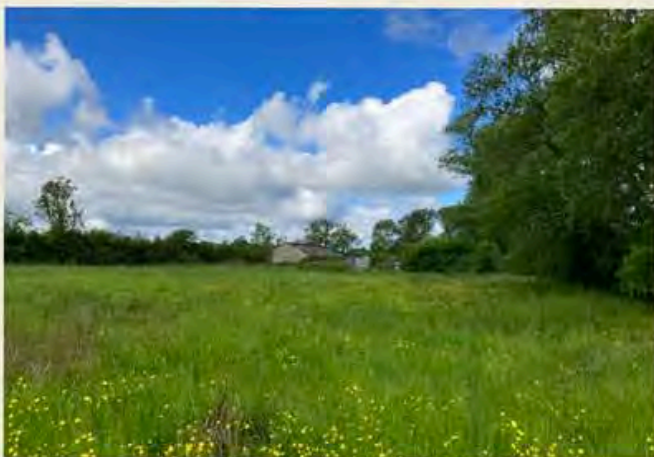
A small grassland farm with period
farmhouse and equestrian facilities.
29.84 acres



**Thrupp Farm,
Thrupp, Stroud**

Guide Price: £750,000

An attractive undulating grassland
farm with buildings and woodlands.
101.60 acres



**Land & Buildings at
Avenue Road, Bourton**

Guide Price: £50,000
**Best & final offers to be submitted
by 3rd July, 2024**

Loose boxes, barns and two
pasture paddocks.
1.48 acres



**Land & Stables at
Hannington Wick, Swindon**

Guide Price: £70,000
**Best & final offers to be submitted
by 8th July, 2024**

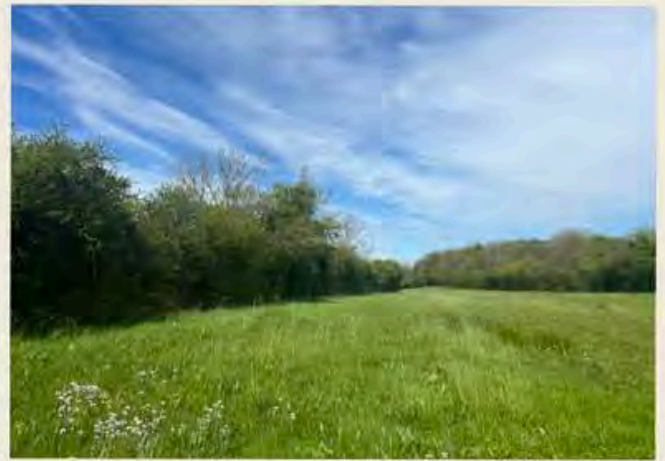
A timber stable block and pasture
paddocks.
1.65 acres



**Land at Ladymead,
Purton Stoke**

Guide Price: £130,000
**Best & final offers to be submitted
by 9th July, 2024**

**An attractive pasture field.
6.50 acres**



**Land at Breadground,
Haynes Knoll**

Guide Price: £35,000
**Best & final offers to be submitted
by 10th July, 2024**

**A pretty pasture paddock.
1.35 acres**



**Land at Moor Farm,
Fairford**

Guide Price: £450,000

**An attractive parcel of arable and
grass farmland with development
potential.
57.58 acres**



**Fairmeadow Farm,
Dauntsey**

Guide Price: £525,000

**A residential development site with
farm buildings and pastureland.
15.01 acres**

**FOR FURTHER INFORMATION, PLEASE CONTACT A MEMBER
OF OUR RURAL SALES TEAM ON 01285 648115**



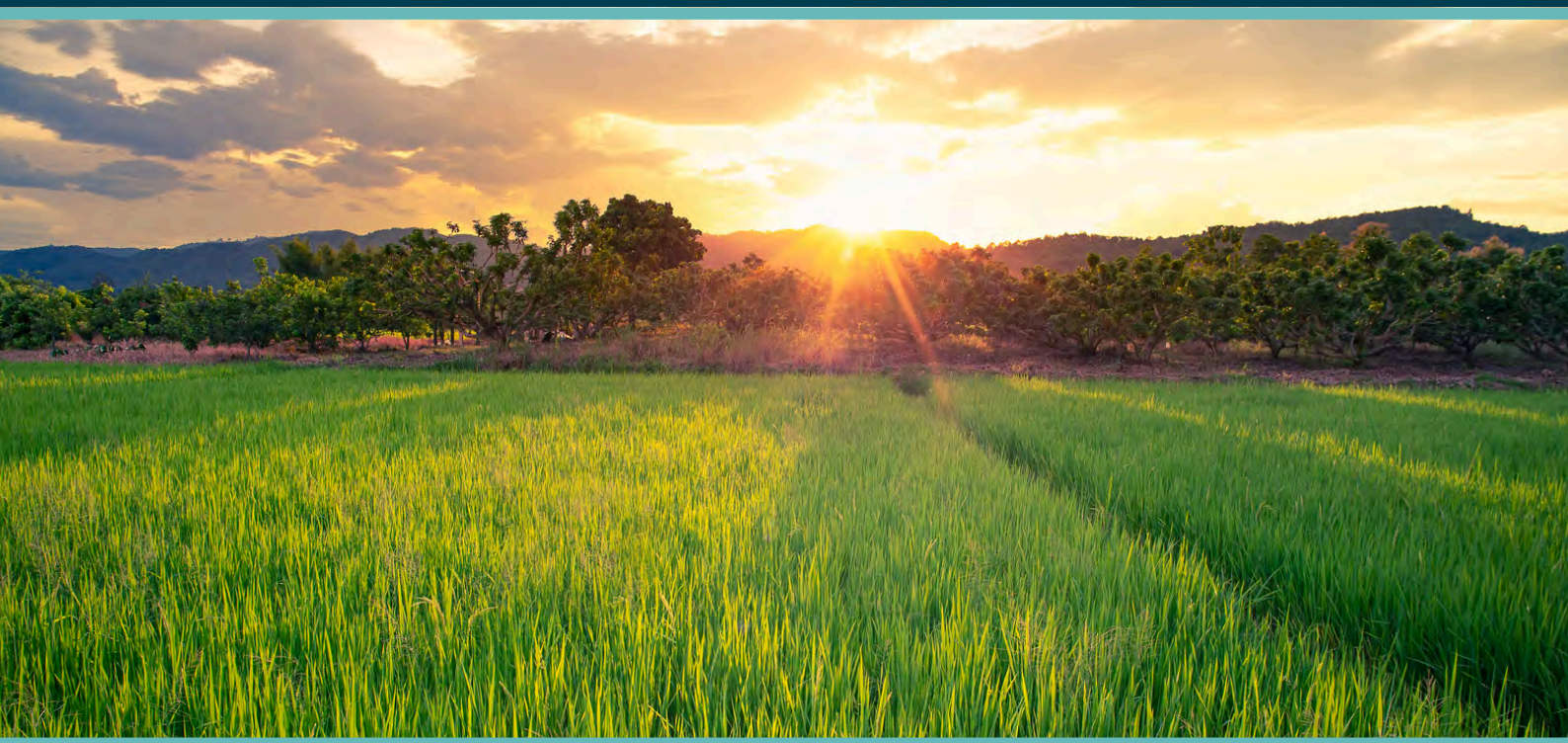
MOORE ALLEN & INNOCENT

Here for the past present and future

LAND & ESTATE AGENTS

VALUERS

AUCTIONEERS



Cirencester Office
01285 651831

Lechlade Office
01367 252541

Cirencester Sallerrooms
01285 646050

mooreallen.co.uk

