



Gabriel Street, SE23 | £450,000

02087029444

foresthill@pedderproperty.com

pedder
We live local



In General

- Two double bedrooms
- Maisonette
- Sleek four piece bathroom
- Bright and spacious reception room
- Charming period features
- Loft room
- Just moments from Honor Oak Park station
- An abundance of natural light
- Close to local amenities
- Excellent transport links

In Detail

A charming two bedroom maisonette for sale on the sought after Gabriel Street, ideally positioned within easy reach of Honor Oak Park station.

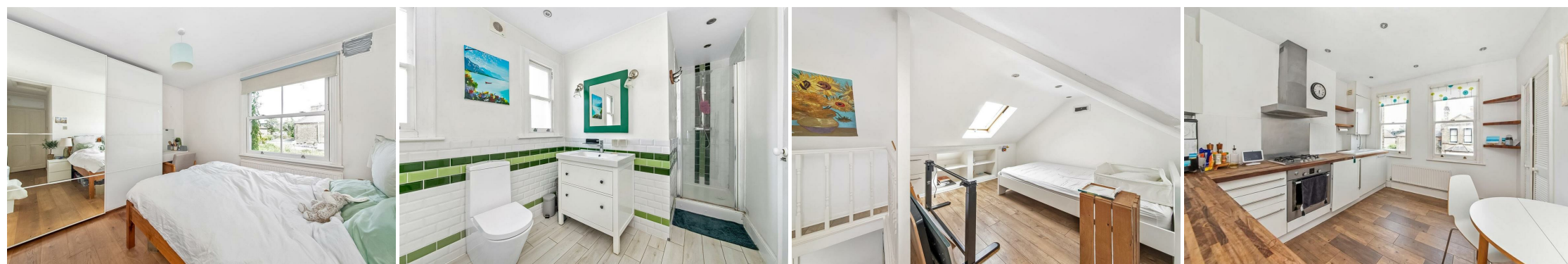
Arranged over two floors and extending to 927 sq ft of internal living space, this charming home offers well-balanced accommodation throughout. The property comprises a double bedroom on the ground floor and a generous second bedroom on the upper floor measuring approximately 17 ft, a stylish four-piece bathroom suite, a separate fitted kitchen with ample space for dining, and a bright, spacious reception room enhanced by an elegant bay window.

The property further benefits from a wealth of characterful period features, an exceptionally long lease, gas central heating, and an abundance of natural light throughout, creating a warm and inviting atmosphere and so much more.

Located approximately 0.2 miles from Honor Oak Park station and 0.6 miles to Crofton Park station, this property is well placed for excellent transport links into London Bridge, Victoria, Blackfriars, Canada Water, Shoreditch, Whitechapel, Highbury & Islington and many other locations. The property is also well located for access to various local amenities including a variety of parks, restaurants, coffee shops, cafes and gastro pubs.

Viewings are highly recommended! Please call the Forest Hill sales team today to arrange a viewing.

EPC: D | Council Tax Band: B | Lease: 900 years remaining | SC: £0 | GR: £0 | BI: TBC



Floorplan

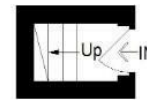
Gabriel Street, SE23

Approximate Gross Internal Area
86.1 sq m / 927 sq ft

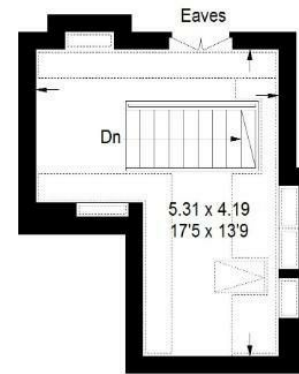


First Floor

= Reduced headroom below 1.5 m / 5'0



Ground Floor



Second Floor

Copyright www.pedderproperty.com © 2026

These plans are for representation purposes only as defined by RICS - Code of Measuring Practice. Not drawn to Scale. Windows and door openings are approximate. Please check all dimensions, shapes and compass bearings before making any decisions reliant upon them.

Energy Efficiency Rating		Current	Potential
Very energy efficient - lower running costs			
102 plus) A			
81-101) B			
69-80) C			
55-68) D		68	74
39-54) E			
21-38) F			
1-20) G			
Not energy efficient - higher running costs			
England & Wales		EU Directive 2002/91/EC	

Pedder Property Ltd trading as Pedder for themselves and for the vendor/landlord of this property whose agents they are, give notice that (1) these particulars do not constitute any part of an offer or contract, (2) all statements contained within these particulars are made without responsibility on the part of Pedder or the vendor/landlord, (3) whilst made in good faith, none of the statements contained within these particulars are to be relied upon as a statement of representation or fact, (4) any intending purchaser/tenant must satisfy him/herself by inspection or otherwise as to the correctness of each of the statements contained within these particulars, (5) the vendor/landlord does not make or give either Pedder or any person in their employment any authority to make or give representation or warranty whatsoever in relation to this property.