



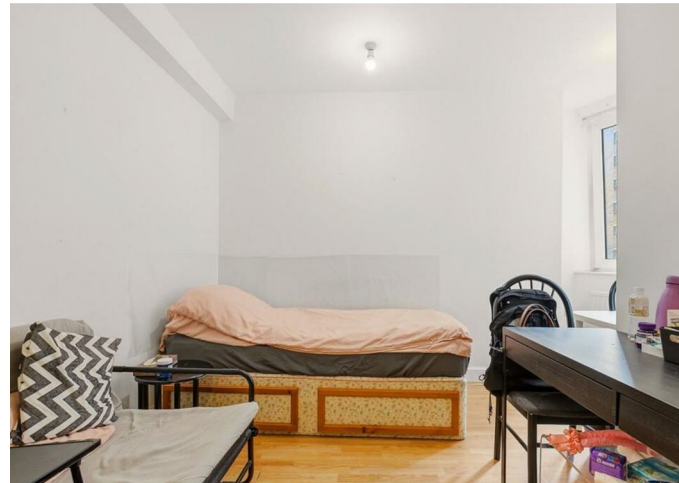
Flat

**272, SLOANE AVENUE,
SW3 3DY**

Per Month
£650 Per

Available: 20th July 2026

FEATURES



Huddletons

1 Bedroom Flat located in London

Call us on

0207 205 4411

info@huddletons.com

<http://www.huddletons.com>

Council Tax Band

C

A well-presented one-bedroom apartment situated within the highly sought-after Chelsea Cloisters development, ideally positioned in the heart of Chelsea.

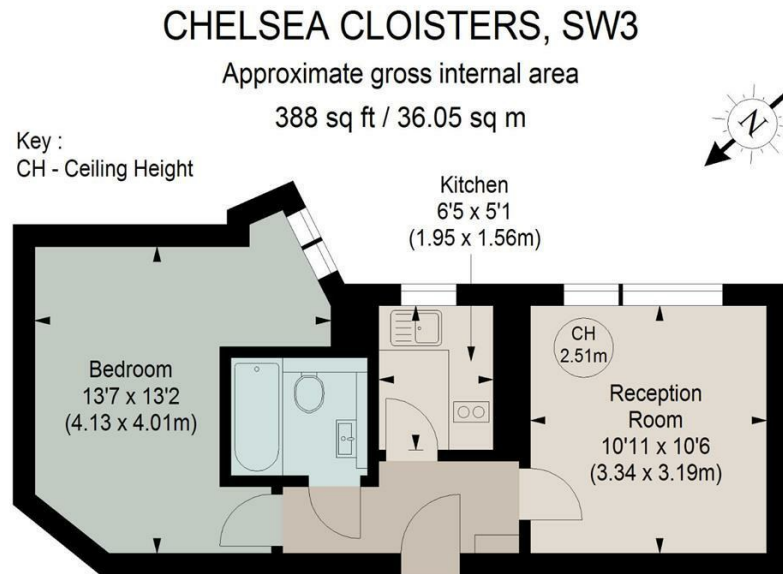
The accommodation comprises a spacious reception room filled with natural light, a separate fully fitted kitchen, a generously sized double bedroom with an attractive bay-window design, and a modern bathroom. The apartment offers a well-balanced layout throughout, making it an excellent choice for first-time buyers, investors, or those seeking a conveniently located London pied-à-terre.

Residents benefit from an enviable location just moments from the fashionable King's Road, Sloane Avenue, and South Kensington, offering an excellent selection of boutiques, restaurants, cafés, and local amenities. The property is also well served by nearby transport links, providing easy access across London.

Key Features:

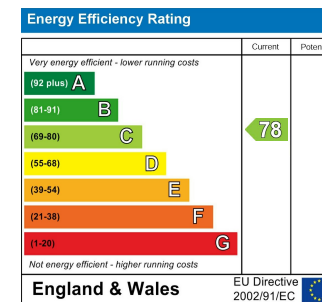
One-bedroom apartment

Bright and spacious reception room



SECOND FLOOR

Although every attempt has been made to ensure accuracy, all measurements are approximate.
This floorplan is for illustrative purposes only and not to scale.
Measured in accordance with RICS standards.



Agents Note: Whilst every care has been taken to prepare these particulars, they are for guidance purposes only. All measurements are approximate and are for general guidance purposes only and whilst every care has been taken to ensure their accuracy, they should not be relied upon and potential buyers are advised to recheck the measurements.

Huddletons