



Copleston Road, SE15 | £575,000

02087028222

eastdulwich@pedderproperty.com

pedder
We live local



In General

- Two bedrooms
- Private garden
- Private entrance
- Over 700 Sq Ft of internal space
- Excellent condition throughout
- Gas central heating
- CHAIN FREE

In Detail

CHAIN FREE – Charming, spacious and beautifully-bright two bedroom first floor period maisonette with direct access onto a private garden ideally located between East Dulwich and Peckham Rye, SE15.

Copleston Road is enviably-located for the independent shops, bars, restaurants and coffee shops of Lordship Lane and Bellenden Road as well as the gorgeous parks and green spaces. There are strong transport links into The City and West End from East Dulwich station (0.2 miles) and Peckham Rye station (0.7 miles) as well as bus/cycle routes through the neighbouring Dulwich Village, Herne Hill and Camberwell.

Boasting over 700 Sq Ft of internal space which has been recently refurbished to a high-standard by the current owner, with potential to loft-extend (STPP). There is a 12x12 ft kitchen-breakfast room with stairs down onto the private 36-ft garden. There is a 12x12 ft bay-fronted separate reception room, a comfortable double bedroom and additional single/study room as well as a modern bathroom.

Early viewing recommended.

EPC: D | Council Tax Band: B | Lease: 85 years remaining | GR: £10 | SC: £858.21 | BI: incl. in SC




Floorplan

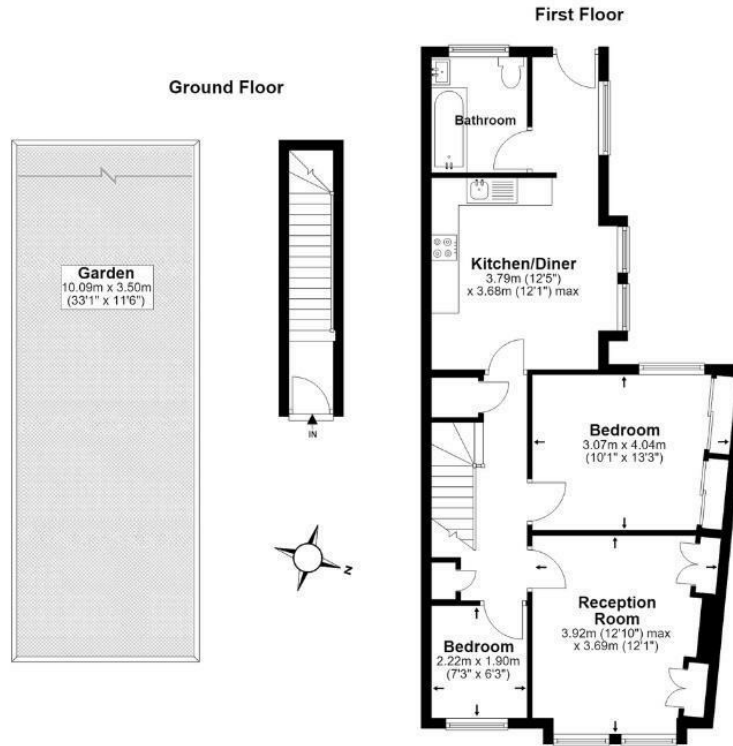
Copleston Road, SE15

Total* = 65.3 sq. m / 702.9 sq. ft

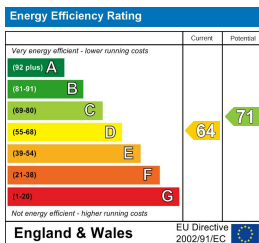
First Floor = 60.9 sq. m / 655.3 sq. ft

Ground Floor = 4.4 sq. m / 47.6 sq. ft

 = Reduced head room below 1.5m



*All measurements are approximate and do not include eaves space. The plans are for representation purposes only as defined by RICS - 'Code of Measurement Practice'. The plans are not to scale. Please personally check all sizes, dimensions, shapes and compass bearings before making any decisions reliant upon them. Copyright The Pedder Group © 2026.



Pedder Property Ltd trading as Pedder for themselves and for the vendor/landlord of this property whose agents they are, give notice that (1) these particulars do not constitute any part of an offer or contract, (2) all statements contained within these particulars are made without responsibility on the part of Pedder or the vendor/landlord, (3) whilst made in good faith, none of the statements contained within these particulars are to be relied upon as a statement of representation or fact, (4) any intending purchaser/tenant must satisfy him/herself by inspection or otherwise as to the correctness of each of the statements contained within these particulars, (5) the vendor/landlord does not make or give either Pedder or any person in their employment any authority to make or give representation or warranty whatsoever in relation to this property.