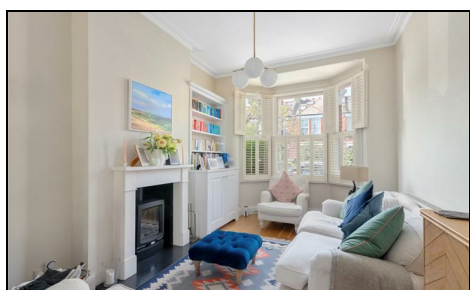


Effra Road Wimbledon, SW19 8PR

£1,250,000 Freehold



A beautifully presented and rarely available four bedroom, two bathroom 'Bay Fronted Semi-Detached' Victorian family home, superbly located in the heart of the ever popular South Park Gardens.

This charming home with an abundance of period features throughout benefits from a bright and airy double length reception leading onto a modern open-plan kitchen/diner. Doors open out onto a sunny south facing garden with decking and the benefit of side access. There is the added bonus of both a downstairs W/C and a utility room.

Comprising two spacious double bedrooms and a large single bedroom perfect for a study on the first floor alongside a family bathroom, the loft has been converted to create a third double bedroom with ensuite and a Juliet balcony.

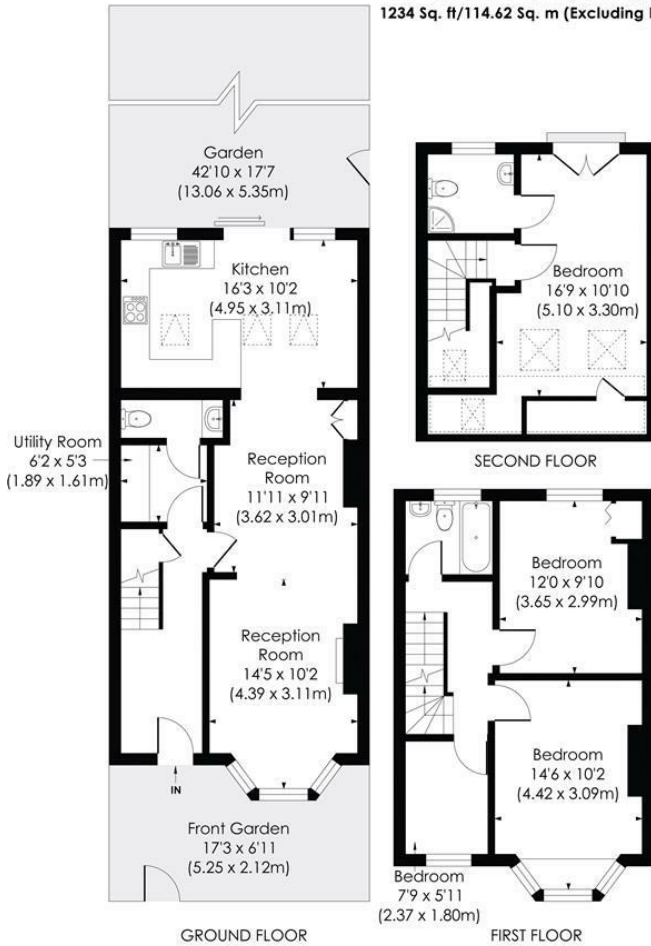
Positioned on Effra Road and nestled in one of Wimbledon's most sought after locations, this family home is moments away from the Outstanding Holy Trinity Primary School and within close proximity to both Wimbledon Town Centre and Mainline Train Station, with the Northern Line Tube and Thameslink within walking distance.

This is an exceptionally rare opportunity to purchase a Semi-Detached property in one of Wimbledon's most coveted postcodes.

EFFRA ROAD, SW19

Approx. Gross Internal Floor Area

1293 Sq. ft/120.12 Sq. m (Including Reduced Height)
1234 Sq. ft/114.62 Sq. m (Excluding Reduced Height)

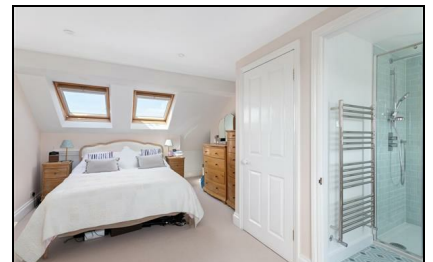


© Pixangle Property Marketing Ltd. info@pixangle.com Tel: 0208 870 2118



This floor plan has been prepared for the purpose of illustration only in accordance with the latest RICS code of measuring practice and is not to scale. All measurements and areas are approximate and whilst every effort has been made to ensure the accuracy of the plan contained here, no responsibility is taken for any error, omission or misstatement.

- Semi-Detached Victorian Family Home
- Superb Location in "South Park Gardens"
- Four Bedrooms
- Two Bathrooms
- Double Length Reception
- Ground Floor W/C & Utility Room
- South Facing Garden
- Close to Outstanding Schools and Various Transport Links
- Freehold
- EPC Rating - C, Merton Council Tax Band -F



Energy Efficiency Rating		Current	Potential
Very energy efficient - best energy grade	A		
Energy efficient	B		
Decent	C	63	85
Needs improvement	D		
Energy inefficient - poor energy grade	E		
Very energy inefficient - worst energy grade	G		
Energy efficient - Top Energy grade England & Wales © Crown Copyright 2020/21 Ordnance Survey			

For Free Mortgage Quote and Best Mortgage Rates, call an Ellisons Mortgage Advisor on 020 8944 9494