



CHURCHILL
estates

Council: Redbridge | Council Tax Band: D | Floor Area: sq ft

High Road, Woodford Green, IG8 9FB
£1,975 Per Month

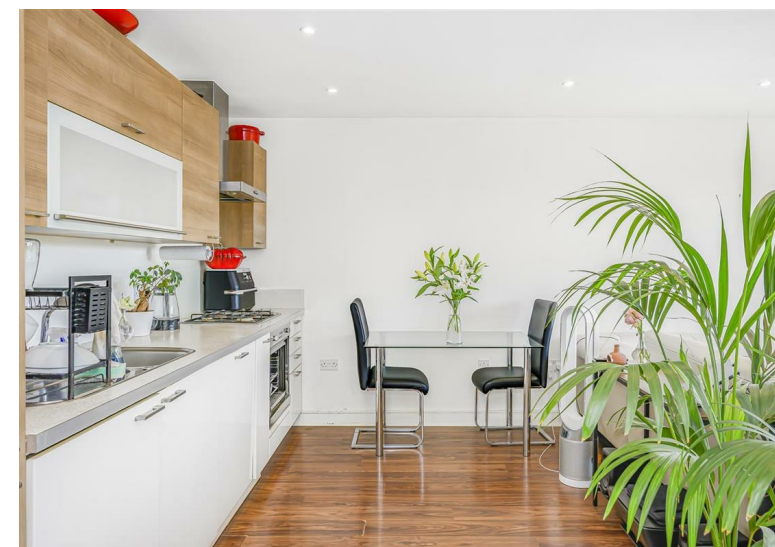
Bedrooms: 2 | Reception Rooms: 1 | Bathrooms: 2

Energy Efficiency Rating		Current	Potential
Very energy efficient - lower running costs			
(92 plus) A			
(81-91) B			
(69-80) C			
(55-68) D			
(39-54) E			
(21-38) F			
(1-20) G			
Not energy efficient - higher running costs			
England & Wales		81	81
	EU Directive 2002/91/EC		



The Agent has not tested any apparatus, equipment, fixtures and fittings or services and so cannot verify that they are in working order or fit for the purpose. A buyer is advised to obtain verification from their solicitor or surveyor. References to the tenure of a property are based on information supplied by the seller. The agent has not had the sight of the title documents. A buyer is advised to obtain verification from their solicitors.

CHURCHILL
estates



Request a Viewing: **0208 530 3333** Email: southwoodford@wearechurchills.co.uk



This spacious two-bedroom apartment is available to rent in one of Woodford Green's most desirable locations. As one of the larger apartments within the development, it offers generous living space, a bright open-plan living, kitchen and dining area, and a south-west-facing balcony that fills the apartment with natural light throughout the day.

Ideally situated, the property is within easy reach of local amenities, shops, the highly regarded Churchfields School, and Woodford Green High Street. South Woodford Station is just a 15-minute walk away, providing excellent transport links into Central London.

The apartment also benefits from a dedicated, secure parking space, making it an ideal home for professionals, couples, or small families.

