



1-3 Bollo Lane, Chiswick, W4 5LW

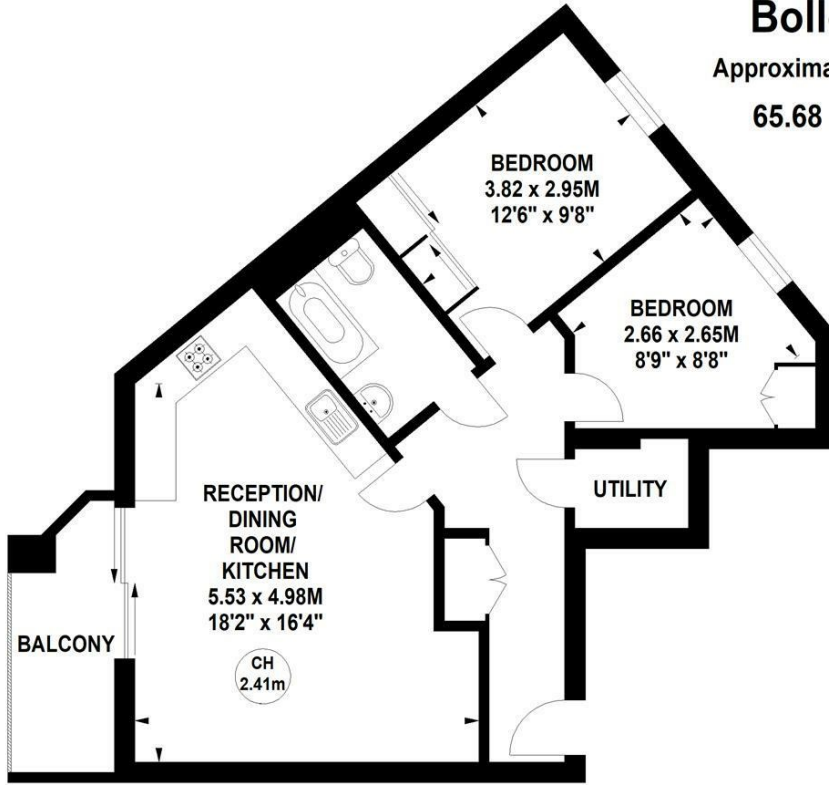
Stunning new and beautifully presented two bedroom apartment within this luxury new development of bespoke apartments situated in this very popular residential location within a short walk of Chiswick's main high road with its array of boutique shops, restaurants and amenities main retailers include M&S, Waitrose, Sainsbury, Tesco & The Co-op. Accommodation provides: 22'11 x 16'3 open plan living area with galley style fitted kitchen with doors leading onto garden, two double bedrooms with custom made wardrobes, luxury bathroom, electric heating & hot water systems, air conditioning, utility cupboard, wood floors to living areas and carpets in bedrooms, private balcony/terrace, extensive landscaped communal gardens, bike storage, development security. Local transport links include Chiswick Park (District line) tube station, numerous local bus routes with convenient access via M4/A4 to central London, Heathrow & the West, The property is offered as unfurnished and available 1st July -Ealing Council Band: TBC. EPC: B

- Newly completed superb bespoke development
- Great for transport links & amenities
- Completed to the highest of standards
- Spacious open plan living area with galley style kitchen
- Two double bedrooms with fitted wardrobes
- Luxury bathroom with overhead shower
- Private balcony/terrace
- Combination of wood flooring and carpets
- Landscaped communal gardens and facilities
- Available 1st July offered unfurnished

£2,600 Per Calendar Month

Bollo Lane, W4

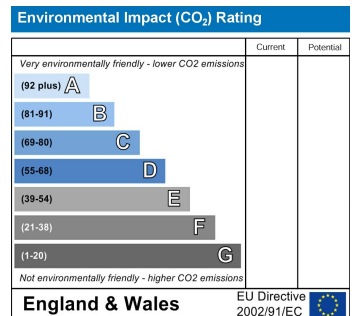
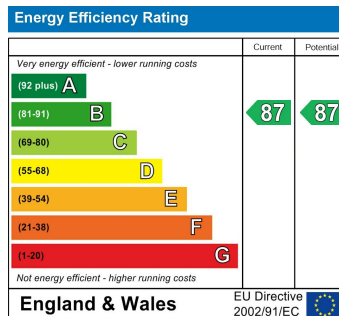
Approximate gross internal area
65.68 sq m / 707 sq ft



Key :
CH - Ceiling Height

Second Floor

Not to scale, for guidance only and must not be relied upon as a statement of fact.
All measurements and areas are approximate only



5-7 Turnham Green Terrace, Chiswick, London, W4 1RG
Tel 020 8747 8800

E-mail lettings@whitmanandco.com
Website www.whitmanandco.com