



Digitally Altered

1 Fallow Court, Great Warley

£925,000

ESTABLISHED 1894  
Hilbery  
Chaplin



**The Property** - Introducing this stunning newly built detached house, one of nine newly built properties.

Boasting four bedrooms, two reception rooms and two bathrooms, located in a sought-after location just one mile from Brentwood train station.

This luxurious property exudes modern elegance and is flooded with natural light throughout.

The spacious garden offers a peaceful retreat, perfect for outdoor entertaining and relaxation.

The property also benefits from off-street parking and a garage, providing ample space for vehicles and storage.

The interior features high-end finishes and contemporary design elements, creating a stylish and inviting atmosphere.

With its prime location and impressive features, this property offers the perfect combination of comfort and convenience for modern living. Don't miss the opportunity to make this exceptional house your new home.

\* All specifications are subject to change, plot number, and availability at the stage of construction. \*

*Stunning four bedroom detached new build family home. For further details and to arrange a viewing call 01277 262600.*

Images shown may include computer-generated visuals, artist impressions, or photographs of show homes intended for illustrative purposes only.



## Location and approximate mileages

|                           |           |
|---------------------------|-----------|
| Brentwood railway station | 1 mile    |
| Brentwood high street     | 1.4 miles |
| M25/A12 Junction          | 1.7miles  |

This property is in the newly built Fallow Court, Mascalls Lane, Brentwood a town in the county of Essex. Conveniently located for Brentwood railway station and the town centre which offers an array of shops, and restaurants to suit all tastes, plus Marks & Spencer and Sainsburys.

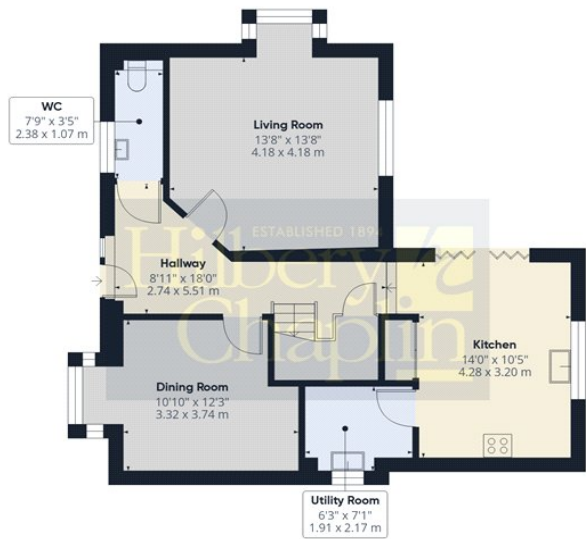
The area proves popular with professionals and families alike due to the wide selection of primary, Infants/Juniors, secondary, and private schools, such as: -

- Ursuline Preparatory School – 0.5 miles
- Warley Primary school – 0.6 miles
- Holly Trees Primary school – 1 mile
- Brentwood Country High School – 1.7 miles
- Great Warley Woodland Schools – 2 miles
- Becket Keys Church of England School – 2.3 miles

There are golf clubs, sports/ leisure facilities, and parks, namely King George's playing fields, Thorndon Park, Hartwood Golf course, and Warley country park

Frequent trains link Brentwood railway station and London Liverpool Street with the Elizabeth line improving the links to central London and extend the line to Whitechapel, Farringdon, Tottenham Court Road, Bond Street, Paddington, and Heathrow.

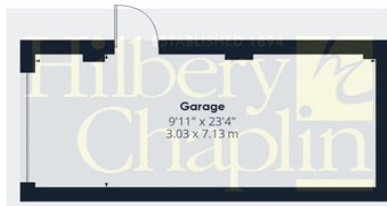




Floor 0 Building 1



Floor 1 Building 1



Floor 0 Building 2

Approximate total area<sup>(1)</sup>

1594 ft<sup>2</sup>  
148 m<sup>2</sup>

(1) Excluding balconies and terraces

Calculations reference the RICS IPMS 3C standard. Measurements are approximate and not to scale. This floor plan is intended for illustration only.

GIRAFFE360

PLEASE NOTE : Hilbery Chaplin, for themselves and for the vendors or lessors of this property give notice that : (1) These particulars do not constitute any part of an offer or a contract; (2) All descriptions, dimensions and other particulars are given only to present a fair overall view and, whilst believed to be correct, any intending purchaser or tenant should not rely on them as statements or representations of fact, but must satisfy themselves by inspection or otherwise as to the correctness of each of them; (3) No person in the employment of Hilbery Chaplin has any authority to make or give any representation or warranty, whatever, in relation to this property; (4) We have not tested any services, appliances, equipment or facilities and nothing in these particulars should be deemed to be a statement that they are in good working order or that the property is in good structural condition or otherwise; (5) Fixtures and fittings mentioned may not be included if an offer is accepted; (6) No enquiries have been made relating to Town Planning or Building Regulation Approval.