

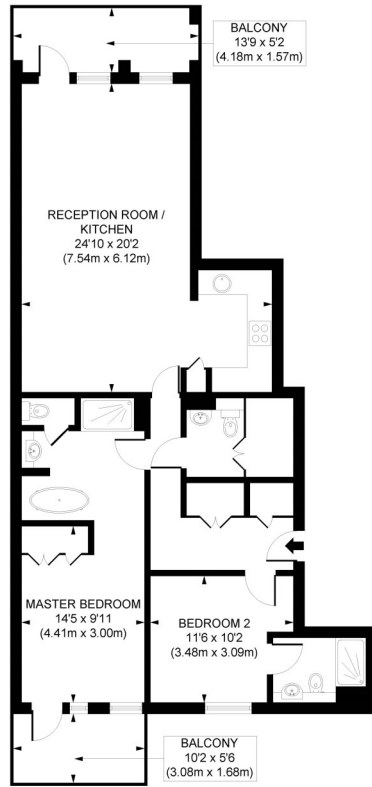
Queens Wharf, Crisp Road

Hammersmith, London, W6





QUEENS WHARF, CRISP ROAD, W6



FIFTH FLOOR

APPROX. GROSS INTERNAL FLOOR AREA 971 sq. ft / 90.20 sq. m

Illustration for identification purposes only. Not to scale. Floor Plan Drawn According To RICS Guidelines.

Queens Wharf, Crisp Road

Hammersmith, London, W6

Price Guide: £985,000

Located on the fifth floor, a superb two bedroom, two bathroom flat with direct river views from the south facing balcony, within this much sought after private development situated directly on the River Thames towpath. The spacious living room is flooded with natural light through large south facing windows and provides access to a private balcony with views directly onto the river and across to Barnes wetlands. The stylish kitchen is well fitted and there is ample space for dining and entertaining. Both bedrooms are of a generous size and each has an ensuite bathroom. The master bedroom also benefits from a private balcony. There is also a separate cloakroom with WC. Residents of Queen's Wharf enjoy outstanding amenities, including a 24-hour concierge, lift, access to a private rooftop terrace and an on-site restaurant, bar, café, cinema and theatre. The development also offers a scenic riverside walkway connecting to the Thames Path, ideal for leisurely strolls or bike rides as well as access to a wonderful selection of restaurants and pubs including The River Café, Sam's Riverside, The Blue Boat and The Dove. Hammersmith underground station (Circle, District, Hammersmith & City, and Piccadilly Lines) is within a 5 minute walk. No onward chain.

Superb two bedroom, two bathroom flat with direct river views in much sought after development

Riverside location | Spacious living room with large windows | Stylish kitchen | Separate cloakroom with WC

Private balcony | Stones throw to delights of the River Thames towpath | No onward chain | 24hr concierge

Close to several transport links | 971 Sq. Ft. (90.20 Sq. M.) Leasehold

All viewings by appointment through our **Hammersmith Office:**

T: 020 7385 7000
E: hammersmith@lawsonrutter.com

192 Fulham Palace Road, London W6 9PA

In accordance with the Property Misdescription Act 1991, we wish to emphasise that the information given in these particulars is intended to help you decide whether you wish to view this property. Whilst every care is taken to ensure the accuracy of these particulars please note that all measurements are approximate and we are, for the accuracy of other information, reliant on what the seller has provided. We strongly recommend that you rely on your own inspections and those of your advisors to establish the details of any aspects which are of particular importance. Please note that we have not undertaken any survey of the property or the appliances within it and the buyer must rely on their own investigations prior to exchange of contracts.

