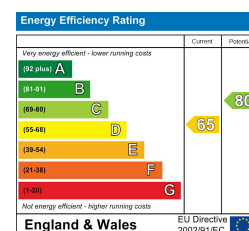
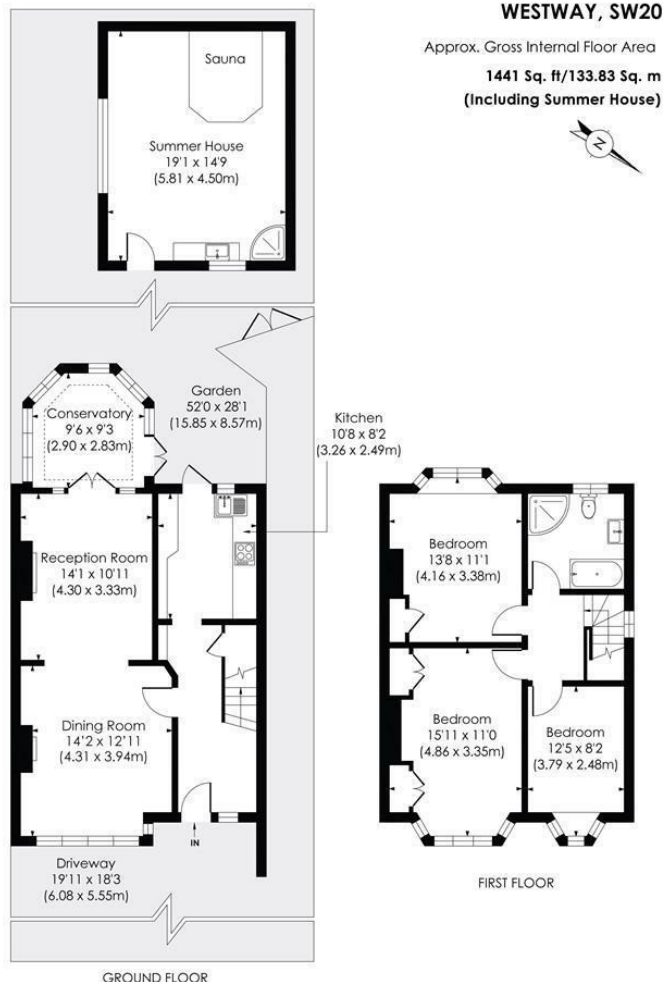


Westway Raynes Park, SW20 9LT

£780,000 Freehold



This superb THREE DOUBLE BEDROOM, End of Terrace 1930's "Blay" House has a fantastic 52ft West Facing Garden, side access and large garden studio. Located on a desirable tree-lined residential road within easy access to Raynes Park High Street and Station. There is off street parking to the front, a spacious hallway with under stairs storage, a large through lounge with "Versailles" Style Parquet Flooring and two gorgeous fireplaces, an extended Conservatory and a separate modern kitchen with bespoke cabinetry. The first floor has three double bedrooms and a four piece family bathroom. This is an excellent, neutrally decorated purchase for an incoming buyer to extend and finish to their own desired tastes subject to the usual consents.



- Three Double Bedroom - End Of Terrace "Blay" House
- Large 52ft West Facing Rear Garden With Side Access
- Off Street Parking To The Front
- Fantastic Sized Garden Studio With Power And Water
- Easy Access To Raynes Park High Street And Station
- Close To Well-Regarded Local Schools
- Easy Access To Cannon Hill Common And AELT Tennis Centre
- Potential To Extend S.T.P.P
- EPC - D
- Council Tax Band - E

For Free Mortgage Quote and Best Mortgage Rates, call Ellisons Mortgage Advisor on 0208 944 9595



Although these particulars are believed to be correct, their accuracy is not guaranteed and they do not form part of any contract.

Celebrating 30 years of successful Sales and Lettings in Merton

