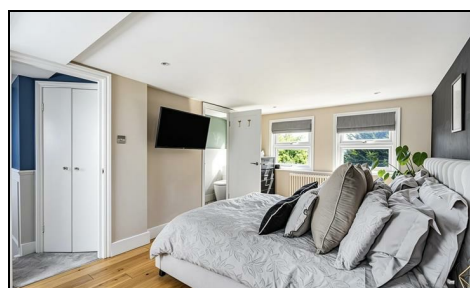


**Bronson Road
Raynes Park, SW20 8DY**

£870,000 Freehold



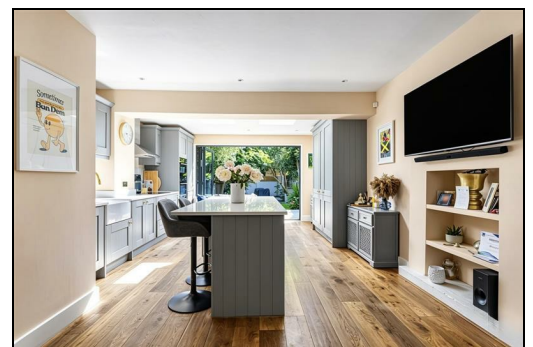
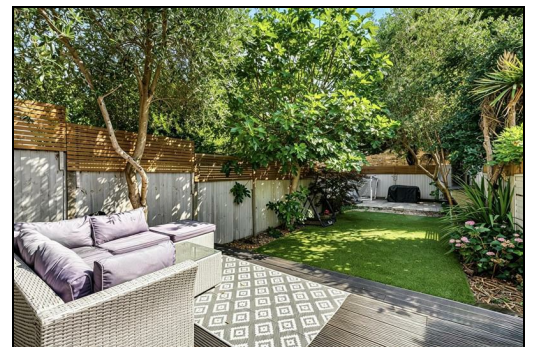
This fantastic THREE DOUBLE BEDROOM, TWO BATHROOM, brick fronted Edwardian Apostle house has a gorgeous open plan kitchen/dining/reception room with bifolding doors, wood floor and stone worktops. Perfectly located within the admissions priority area for Wimbledon Chase Primary School and access to both Raynes Park and Wimbledon Chase station and shops. There is also a 50'ft landscaped garden, spacious master bedroom with en suite shower room, downstairs W.C/utility room and a modern family bathroom.

BRONSON ROAD, SW20

Approx. Gross Internal Floor Area

1157 Sq. ft/107.52 Sq. m (Including Reduced Height)

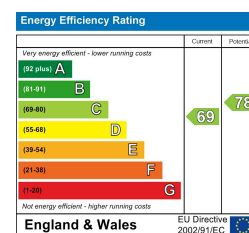
1113 Sq. ft/103.37 Sq. m (Excluding Reduced Height)



pixangle PROPERTY MARKETING
 This floor plan has been prepared for the purpose of illustration only in accordance with the latest RICS code of measuring practice and is not to scale. All measurements and areas are approximate and whilst every effort has been made to ensure the accuracy of the plan contained here, no responsibility is taken for any error, omission or misstatement.

© Pixangle Property Marketing Ltd. info@pixangle.com Tel: 0208 870 2118

- Three Double Bedrooms
- Two Bathrooms
- Downstairs W.C / Utility Room
- Open Plan Kitchen/Dining/Living
- 50 ft Landscaped Garden
- Close To Wimbledon Chase Station & Shops
- Close To Raynes Park Station & Shops
- Within A.P.A For Wimbledon Chase Primary School
- EPC - C
- Council Tax Band - E



For Free Mortgage Quote and Best Mortgage Rates, call Ellisons Mortgage Advisor on 0208 944 9595



Although these particulars are believed to be correct, their accuracy is not guaranteed and they do not form part of any contract.

Celebrating 30 years of successful Sales and Lettings in Merton

