



11a Charteris Road, London, N4 3AA

£2,150 Per Month

# 11a Charteris Road, London N4 3AA

Situated on the sought-after Charteris Road, this well-presented ground floor Victorian conversion offers approximately 463 sq ft (43.1 sq m).

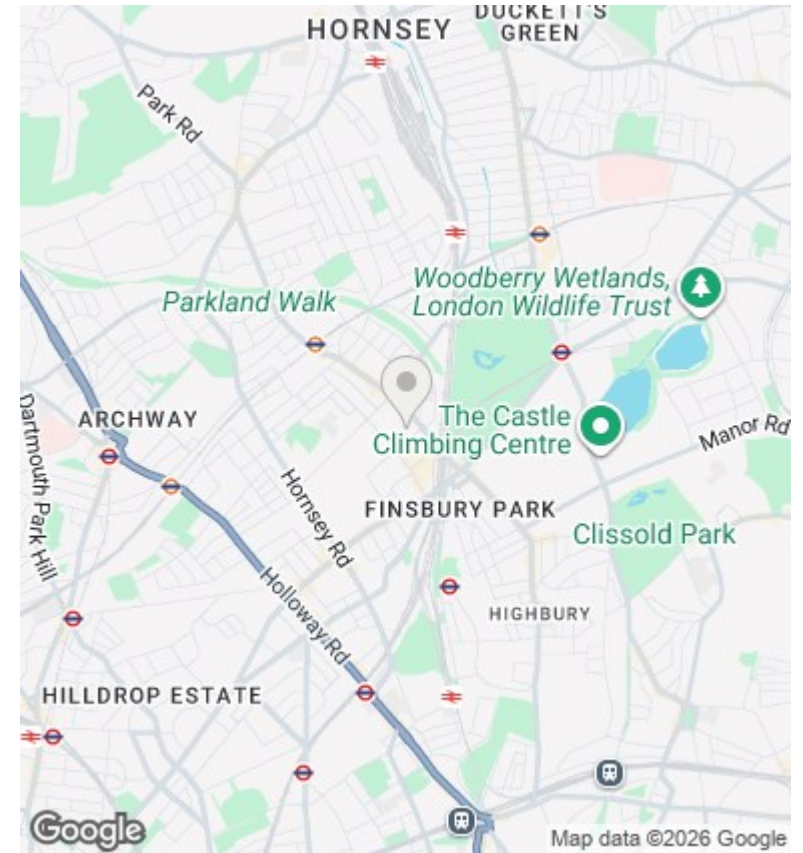
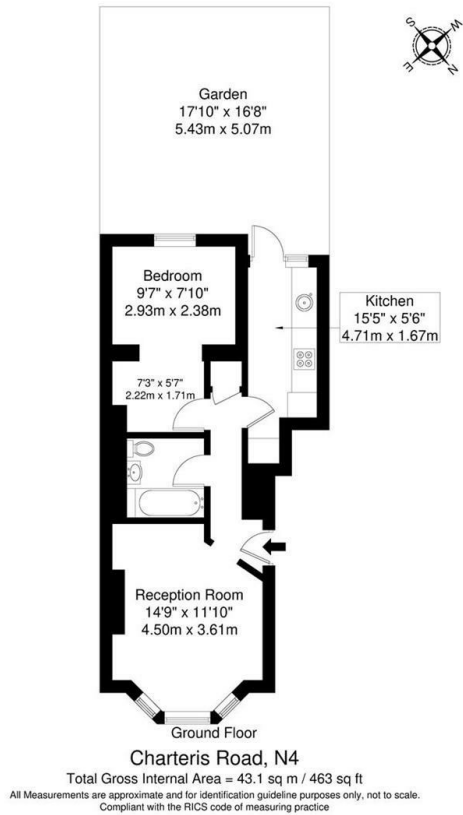
The property features a bright bay-fronted reception room, a separate fitted kitchen, a double bedroom, a modern bathroom and a versatile study or dressing area. The private rear garden provides an ideal outdoor space for relaxing or entertaining.

Conveniently located within easy reach of Finsbury Park Station which has excellent transport links, a wide range of local amenities and the open green spaces of the park itself.



Council Tax Band: C





## Directions

## Viewings

Viewings by arrangement only. Call 02073593191 to make an appointment.

## Council Tax Band

C

Energy Efficiency Rating		Current	Potential
Very energy efficient - lower running costs			
(92 plus) <b>A</b>			
(81-91) <b>B</b>			
(69-80) <b>C</b>		73	76
(55-68) <b>D</b>			
(39-54) <b>E</b>			
(21-38) <b>F</b>			
(1-20) <b>G</b>			
Not energy efficient - higher running costs			
<b>England &amp; Wales</b>	EU Directive 2002/91/EC		



