



## Bromyard Avenue, London, W3 7BE

In the sought-after gated development of Bromyard House, this bright, airy furnished one-bedroom apartment is ideal for professionals or couples and is move-in ready. Extending to approximately 466 sq ft, the property features a generous open-plan living and dining area, a modern fitted kitchen with integrated appliances and ample storage, a well-proportioned double bedroom with built-in wardrobes, and a spacious bathroom complete with a full-size bath with overhead shower. Offered fully furnished, the apartment further benefits from a double ottoman bed, large fold-out double sofa bed, dining table and chairs, fridge/freezer, lift access, and the convenience of a 24-hour concierge. Residents enjoy excellent connectivity to Acton, Shepherd's Bush and Chiswick, with a wide selection of shops, restaurants, cafés and local amenities all within easy reach. Ealing Council Tax Band C. Available now

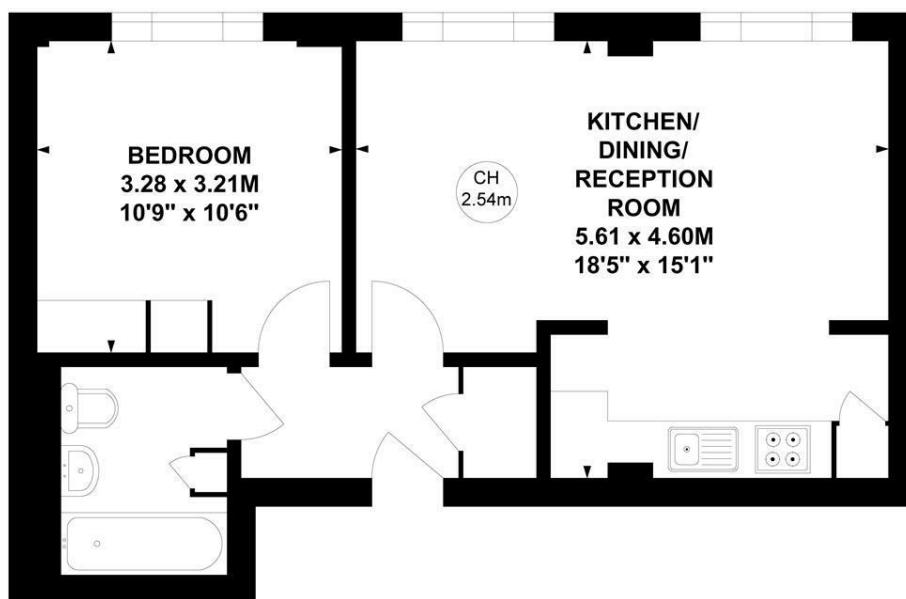
- Bright one-bedroom apartment
- Double bedroom with fitted wardrobes
- Spacious open-plan kitchen/reception room
- Gated development with 24-hour concierge
- Lift access
- Fully furnished
- Excellent transport links

**£1,750 Per Calendar Month**

# Bromyard House, W3

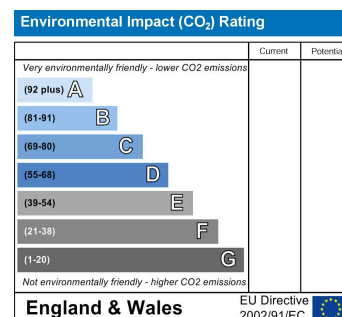
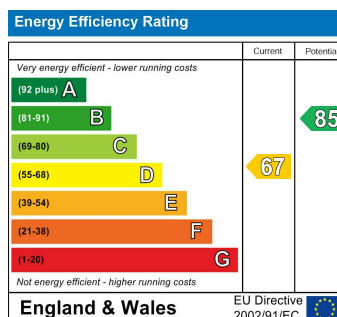
Approximate Gross Internal Area  
43.30 sq m / 466 sq ft

Key :  
CH - Ceiling Height



## Second Floor

Not to scale, for guidance only and must not be relied upon as a statement of fact.  
All measurements and areas are approximate only



5-7 Turnham Green Terrace, Chiswick, London, W4 1RG

Tel 020 8747 8800

E-mail [lettings@whitmanandco.com](mailto:lettings@whitmanandco.com)

Website [www.whitmanandco.com](http://www.whitmanandco.com)



MISREPRESENTATION ACT 1967

Whitman & Co. for themselves and for the vendors give notice that these particulars do not constitute any part of, an offer of contract. All statements contained in these particulars are made without responsibility on the part of Whitman & Co. or the vendor. None of the statements contained in these particulars is to be relied upon as statements or representations of facts. Any intending purchaser must satisfy himself by inspection or otherwise as to the correctness of each of the statements contained in these particulars. The vendor does not make or give, and neither Whitman & Co. or any person in their employment has any authority to make or give, any representation or warranty whatever in relation to the property.