



Symonds
& Sampson

The Chalet

Venlake, Uplyme, Dorset

The Chalet

Venlake
Uplyme
Dorset DT7 3SE

An exciting opportunity to purchase a detached bungalow of non traditional construction set in the heart of Uplyme. No onward chain.



- Pretty village setting
- Scope for improvement
- Potential redevelopment
- Two double bedrooms
 - Off road parking
- Gas fired central heating
 - Lawned rear garden
- Excellent views to rear
 - Large undercroft

Guide Price **£240,000**

Freehold

Axminster Lettings
01297 33122
axminster@symondsandsampson.co.uk



THE PROPERTY

The Chalet is a timber built detached bungalow in an attractive village location with country views. Whilst the property offers the principal modern amenities, including gas central heating, it would now benefit from general refurbishment. The exterior is clad in timber shiplap and we have been advised by the owners that the walls are insulated. In our opinion the property can be a comfortable affordable home, potential holiday retreat or may have even be redeveloped (subject to Local Authority consent).

ACCOMMDATION

The double fronted accommodation is fed by a central hallway with access to all principle rooms and loft space. To the front of the property is the sitting room with the kitchen set behind, both of these rooms enjoy a dual aspect. The kitchen features a range of wall and base units, integral oven, and a selection of freestanding appliances. There are two double bedrooms with fitted wardrobes and a modern shower room.

OUTSIDE

To the front of the property is a brick paved private parking bay with steps down to the front elevation and passageway leading round to the rear garden. The garden is mainly lawned with a variety of established shrubs, mature hedging and water supply. Underneath the rear elevation of

the property is an undercroft which spans the full width of the bungalow. This space provides an excellent storage area but does have limited head height, less than 6ft.

SITUATION

Located along a picturesque lane close to the centre of the village The Chalet enjoys unspoilt countryside with many nearby footpaths and quiet country lanes to enjoy. The village has a thriving community with excellent facilities including a general stores/fuel station and Post Office, public inn, village hall, sports clubs, with the surrounding area renowned for its footpaths and trails. There are also well regarded primary and secondary schools close by. Lyme Regis is a most popular and picturesque coastal town noted for its attractive period buildings, the famous centuries-old Cobb and harbour. In the town is an excellent selection of facilities including many independent shops, and a number of restaurants and hotels, together with a theatre and various museums. A short walk from the high street is the charming award-winning sandy beach, ideal for families; the harbour, popular with anglers and those keen on deep sea fishing trips; the sailing and power boat clubs. The nearby market town of Axminster offers a good range of day to day amenities, including supermarkets as well as a vibrant street market every Thursday and a mainline train service to London Waterloo.

DIRECTIONS

What3Words
///waggled.brands.vine

SERVICES

Mains electric, gas, water and drainage.
Ultrafast broadband and mobile network coverage available in the area. Refer to Ofcom's website for more details.

LOCAL AUTHORITY

East Devon Council
Tel : 01404 515616
Council Tax Band: A

MATERIAL INFORMATION

The area around the property is at a very low risk from flooding from rivers and seas, and surface water. Due to the method of construction we recommend that any purchasers looking to secure a mortgage against the property take professional advice before arranging a viewing.

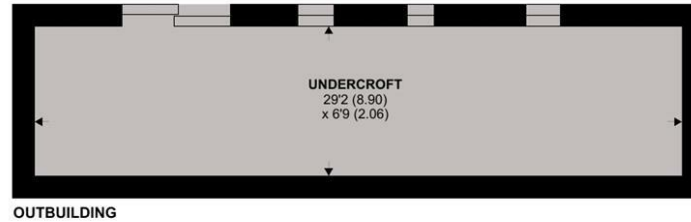
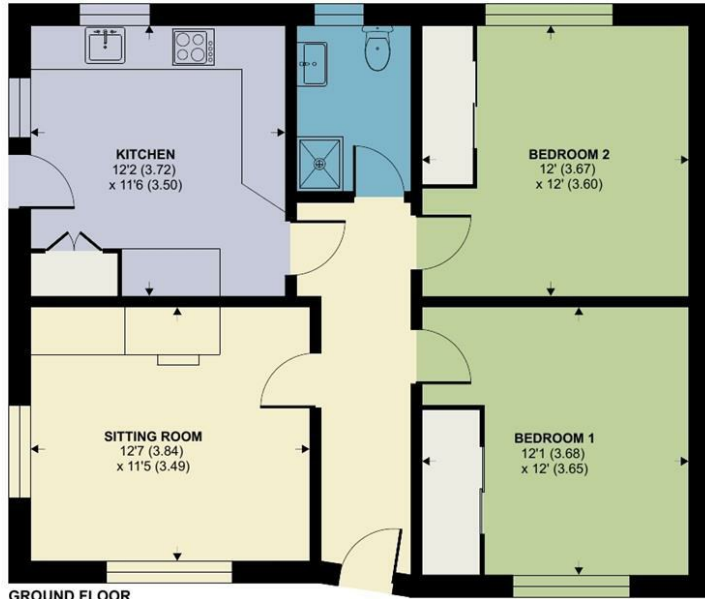


The Chalet, Venlake, Uplyme, Lyme Regis

Approximate Area = 726 sq ft / 67.4 sq m
 Outbuilding = 197 sq ft / 18.3 sq m
 Total = 923 sq ft / 85.7 sq m
 For identification only - Not to scale



Energy Efficiency Rating		Current	Potential
Very energy efficient - lower running costs			
102 (9.0)	A		
81 (6.9)	B		81
69 (5.8)	C	72	
55 (4.6)	D		
39 (3.3)	E		
21 (1.8)	F		
1 (0.0)	G		
Not energy efficient - higher running costs			
England & Wales		EU Directive 2002/91/EC	



Floor plan produced in accordance with RICS Property Measurement 2nd Edition, Incorporating International Property Measurement Standards (IPMS2 Residential). © nichecom 2026. Produced for Symonds & Sampson. REF: 1479004



Axm/RIS/24.6.26



01297 33122

axminster@symondsandsampson.co.uk
 Symonds & Sampson LLP
 , Trinity Square,
 Axminster, Devon EX13 5AW



Important Notice: Symonds & Sampson LLP and their clients give notice that they have no authority to make or give any representations or warranties regarding the property. These particulars do not form part of any offer or contract and must not be relied upon as statements of fact. Some descriptions and images may have been AI-assisted; while reviewed for accuracy, interested parties should verify key details through inspection or by contacting our agents. All measurements and distances are approximate. Text, photographs, and plans are for guidance only and may not be comprehensive. It should not be assumed that the property has all necessary planning or regulatory consents, and no services, equipment, or facilities have been tested. No investigations have been made into pollution or contamination; purchasers must make their own enquiries. The property is sold subject to all existing wayleaves, easements, and rights of way (public or private), whether mentioned or not. Vendors are not required to define such rights.