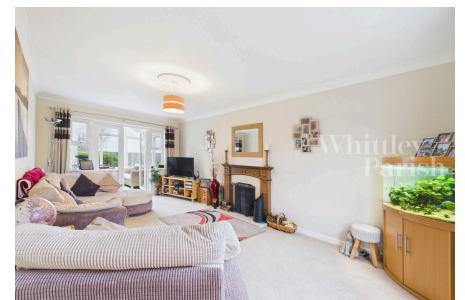


Field Acre Way, Long Stratton

Guide Price £465,000

5 3 3



A five bedroom detached house being tucked away in a cul-de-sac. A spacious living room with an open fireplace leads through to a large conservatory looking and giving access to the rear garden. The kitchen provides an eye level inset double oven with a range of wall and floor storage units as well as space for appliances and leads to a separate utility room giving further storage and plumbing for a washing machine with an external door to the side. The dining room is found to the front and offers itself for a number of purposes. A downstairs WC and office complete the ground floor. At first floor level, the gallery landing gives access to three double bedrooms all with built-in wardrobes and a family bathroom. A further two double bedrooms are found at second floor level.

Key Features

- Largest Design on the Development
- 5 Double Bedrooms
- 3 Reception Rooms
- Double Garage and Off Road Parking
- Gas Central Heating - Mains Drainage
- Approx 1900sqft of Versatile Accommodation
- Family Bathroom and x2 Ensuites
- Large Conservatory
- Spacious Rear Garden with Decking Area
- Freehold - EPC Rating C - Council Tax Band E

