



LANCASTER ROAD

London, W11

£800,000

2 Bed | 1 Bath |

SANDERSONS

LONDON



A First Floor Apartment in an Amazing Location

Guide Price £800,000-£850,000: superbly located on the vibrant Lancaster Road in London, this charming first-floor apartment offers a delightful blend of comfort and convenience. Spanning 639 square feet, the property features a well-appointed reception room that serves as the perfect space for relaxation or entertaining guests.

The apartment boasts two bedrooms, providing ample room for rest and privacy. The bathroom is thoughtfully designed, ensuring both functionality and style.

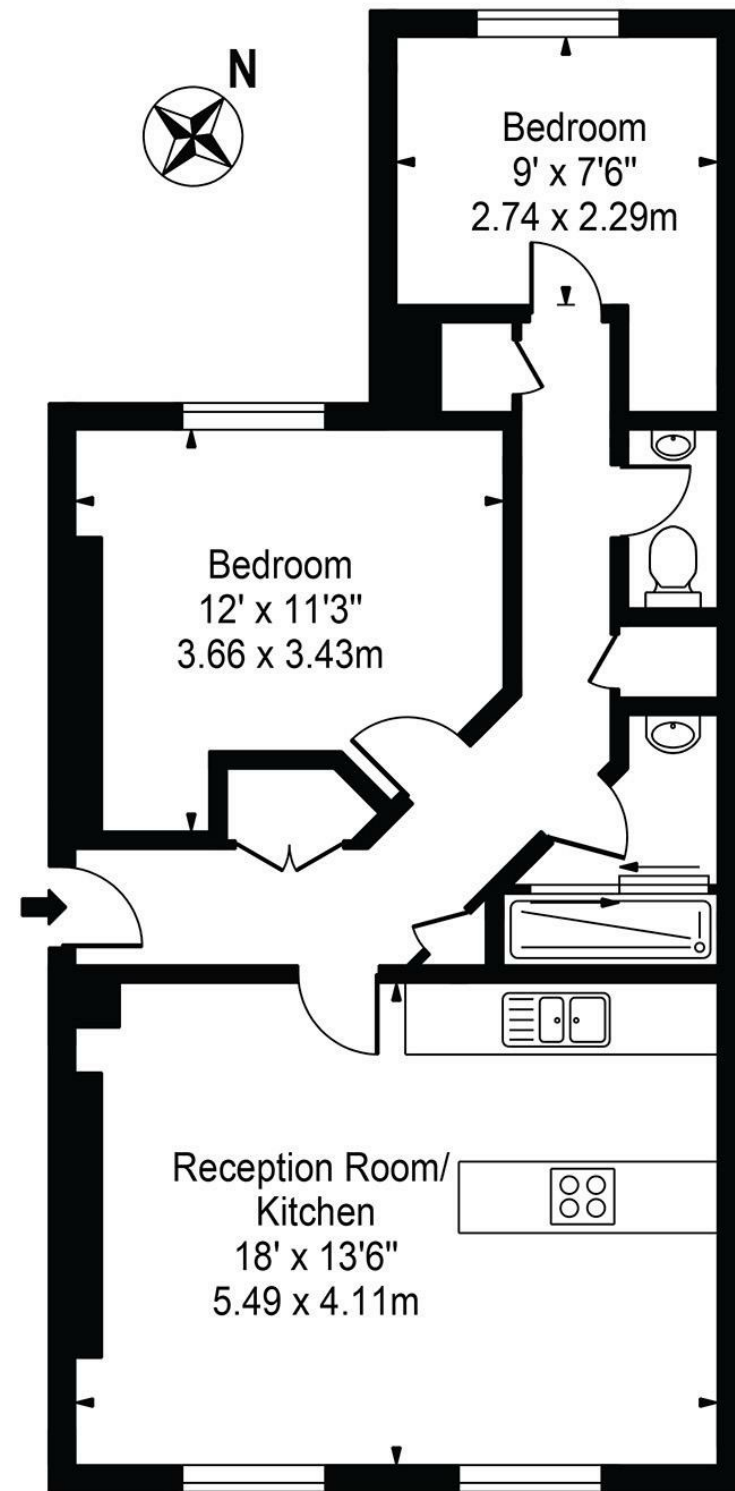
Living in this location means you are just a stone's throw away from a variety of shopping options, making it easy to indulge in retail therapy or to pick up daily essentials. The surrounding area is well-connected with Ladbroke Grove Underground station 0.1 miles away.

Notable local Highlights: Portobello Market, the historic Electric Cinema, three Michelin star The Ledbury and the local green spaces of W11.



Lancaster Road, W11

Approx. Gross Internal Area 639 Sq Ft - 59.36 Sq M



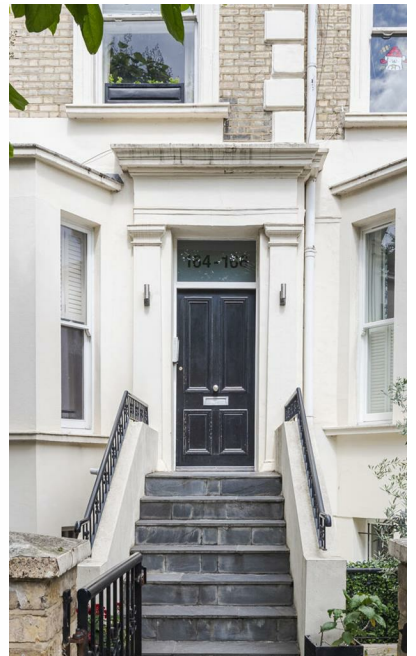
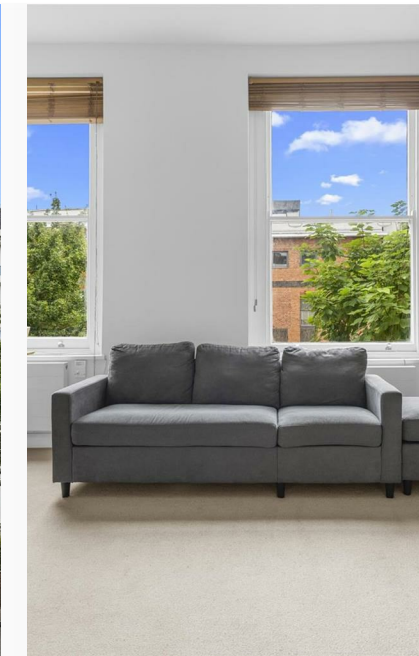
First Floor

For Illustration Purposes Only - Not To Scale

This floor plan should be used as a general outline for guidance only and does not constitute in whole or in part an offer or contract. Any intending purchaser or lessee should satisfy themselves by inspection, searches, enquiries and full survey as to the correctness of each statement. Any areas, measurements or distances quoted are approximate and should not be used to value a property or be the basis of any sale or let.

KEY FEATURES

- Two bedrooms
- First-floor apartment
- Close to Portobello Market
- Dining hotspots nearby
- Luxury boutiques close
- Historic Electric Cinema nearby
- Very Close to Local Transport






EPC Rating: | Council Tax Band: D

SANDERSONS

LONDON

 108 Holland Park Avenue, London,
W11 4UA

 020 7602 6725

 james@sandersonslondon.co.uk

 sandersonslondon.co.uk