



Symonds
& Sampson

Highway Cottage

Main Street, Broadmayne, Dorchester, Dorset

Highway Cottage

20 Main Street, Broadmayne
Dorchester, Dorset
DT2 8EB

A charming three double bedroom semi-detached cottage, with a delightful rear garden, garage, and off-road parking.



- Well-maintained brick and stone cottage
 - Three double bedrooms, en-suite
 - Sitting room with wood burner
 - Bright kitchen/breakfast room
- Separate dining room with storage
 - Cottage garden with pergola
 - Garage with power and light
 - Parking for two vehicles

Offers In Excess Of £375,000

Freehold

Dorchester Sales
01305 261008
dorchester@symondsandsampson.co.uk



THE PROPERTY

This charming cottage, with a mixture of brick and stone elevations, has been well maintained and is presented in very good decorative order. Deceptively spacious, it enjoys a number of attractive features including a wood-burning stove, fitted cupboards, and a lovely cottage garden with a private and secluded patio complete with pergola.

The accommodation is bright and airy, comprising an entrance hall and a sitting room with chimney breast, wood burner and hearth, TV aerial connection, and engineered wood-style flooring. There is a separate dining room with built-in cupboards to either side of the chimney breast.

The kitchen/breakfast room is fitted with a range of cupboards and drawers, ample work surfaces, a ceramic Butler sink with mixer tap, and space for a range-style oven. It also features tiled flooring and leads to a utility room housing a modern gas boiler, with space for a washing machine, tumble dryer and upright freezer, together with further storage for coats, shoes and boots.

Upstairs, the landing provides a useful linen cupboard. There are three double bedrooms, with the principal bedroom benefiting from an en-suite bathroom. The en-suite has a vaulted ceiling (with some restricted head height), bath, WC, wash basin, heated towel rail, and windows providing natural light.

The property is not listed and further benefits from double glazing and gas central heating. There is also a downstairs shower room

with WC. To the rear of the property is a garage with power and light, along with parking for two vehicles.

OUTSIDE

The cottage sits roadside, with the garden located to the rear on the south elevation. This is a lovely, well-kept space with a variety of shrubs and plants and is mainly laid to lawn. Immediately adjoining the house is a private patio area with pergola, ideal for outdoor seating and entertaining.

Steps rise to the main garden, which continues around the side of the property and leads to a useful garden shed. There is also a further decking area, perfectly positioned to enjoy the morning sun.

The property benefits from rear access from the parking area and garage, which has power and light.

SITUATION

Broadmayne is a popular and well-served village located approximately four miles south-east of Dorchester, the county town. Dorchester offers an excellent range of shopping and recreational facilities, together with a mainline railway service to London Waterloo.

The village benefits from a good selection of local amenities including a parish church, first school, sub post office and shop, public house and village hall, which hosts a variety of clubs and activities for all ages. Regular bus services connect Broadmayne with Dorchester and surrounding towns.

The area is ideally placed for enjoying the Dorset coastline, with cross-Channel ferry services available from Poole and sandy beaches at Weymouth and Poole. There is also an extensive network of footpaths and bridleways providing access to the surrounding countryside and coastline.

DIRECTIONS

what3words///over.knees.paddle

SERVICES

All mains services are connected.
Gas fired central heating.

Broadband - Ultrafast speed available

Mobile - There is mobile coverage in the area, please refer to Ofcom's website for more details. (<https://www.ofcom.org.uk>)

Council Tax Band: E (Dorset Council - 01305 251010)

MATERIAL INFORMATION

Photos were taken May 2026.

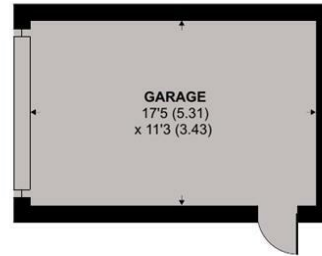


Main Street, Broadmayne, Dorchester

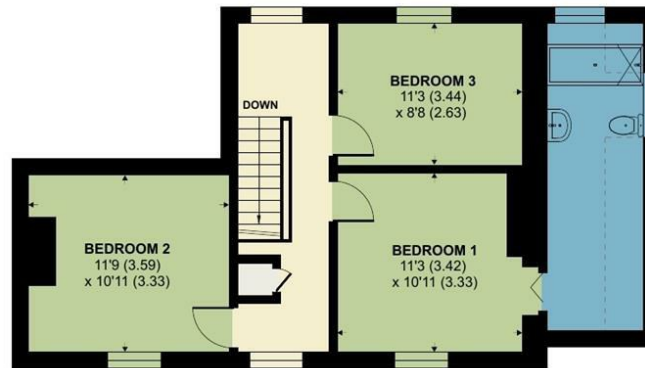
Approximate Area = 1331 sq ft / 123.6 sq m
 Limited Use Area(s) = 34 sq ft / 3.1 sq m
 Garage = 196 sq ft / 18.2 sq m
 Total = 1561 sq ft / 144.9 sq m
 For identification only - Not to scale



Denotes restricted head height



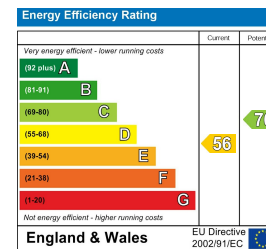
GROUND FLOOR



FIRST FLOOR



Floor plan produced in accordance with RICS Property Measurement 2nd Edition, Incorporating International Property Measurement Standards (IPMS2 Residential). © ncheom 2026. Produced for Symonds & Sampson. REF: 1465230



Dorchester/SXP/03.06.2026



01305 261008

dorchester@symondsandsampson.co.uk
 Symonds & Sampson LLP
 9 Weymouth Avenue, Brewery Square,
 Dorchester, Dorset DT1 1QR



Important Notice: Symonds & Sampson LLP and their clients give notice that they have no authority to make or give any representations or warranties regarding the property. These particulars do not form part of any offer or contract and must not be relied upon as statements of fact. Some descriptions and images may have been AI-assisted; while reviewed for accuracy, interested parties should verify key details through inspection or by contacting our agents. All measurements and distances are approximate. Text, photographs, and plans are for guidance only and may not be comprehensive. It should not be assumed that the property has all necessary planning or regulatory consents, and no services, equipment, or facilities have been tested. No investigations have been made into pollution or contamination; purchasers must make their own enquiries. The property is sold subject to all existing wayleaves, easements, and rights of way (public or private), whether mentioned or not. Vendors are not required to define such rights.