

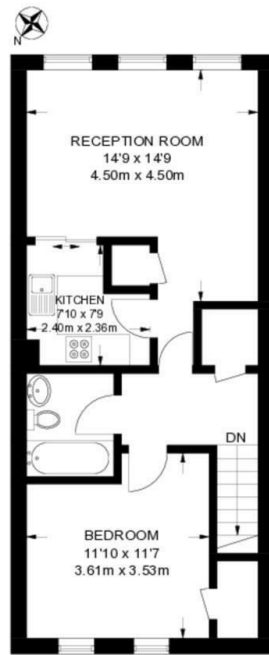
URBAN lettings



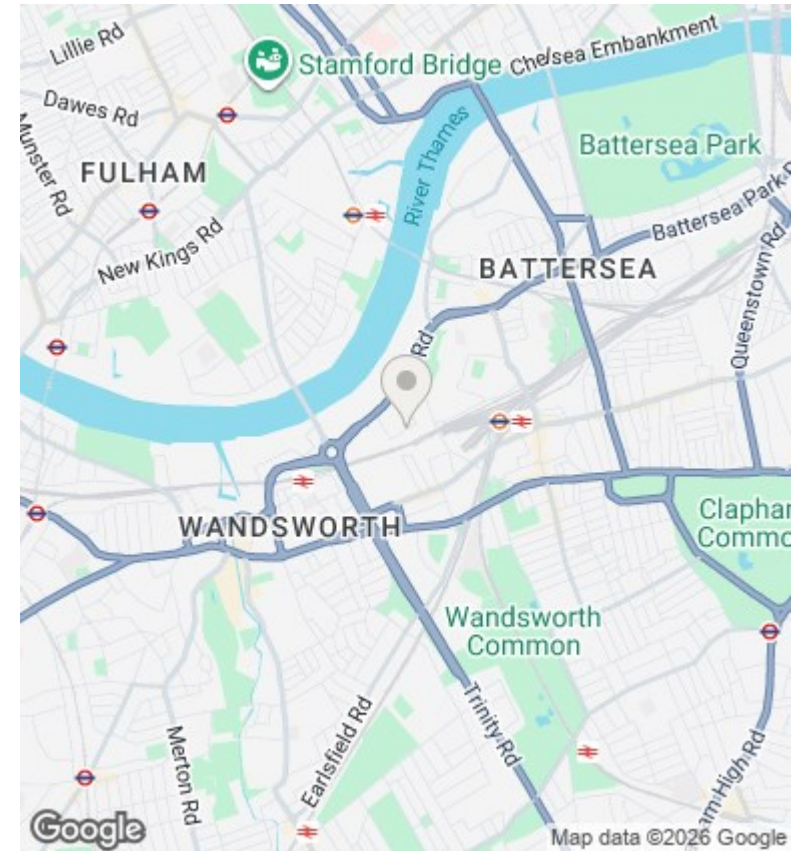
Maysoule Road, SW11 2BW

£1,850 Per Month

- One bedroom first floor flat with private entrance
- Well maintained and in good decorative order throughout
- Spacious living room with space for a dining table
- Separate kitchen with skylight and glass serving hatch
- Dishwasher and tall freestanding fridge freezer included
- Excellent storage with walk-in cupboards and boarded loft storage
- Tiled bathroom with shower cubicle
- Approximately half a mile from Clapham Junction station



SECOND FLOOR
535 SQ FT / 49.7 SQ M



Directions

Viewings

Viewings by arrangement only. Call 020 7585 2761 to make an appointment.

Council Tax Band

C

EPC Rating:

C

Energy Efficiency Rating		Current	Potential
<i>Very energy efficient - lower running costs</i>			
(92 plus) A			
(81-91) B			
(69-80) C		77	79
(55-68) D			
(39-54) E			
(21-38) F			
(1-20) G			
<i>Not energy efficient - higher running costs</i>			
England & Wales		EU Directive 2002/91/EC	