



Howberry Road, CR7 | Offers In Excess Of £625,000

020 8702 9333

[crystalpalace@pedderproperty.com](mailto:crystalpalace@pedderproperty.com)

**pedder**  
We live local



# In General

- Three bedroom Victorian house
- Characterful features
- Quiet residential road
- Large private rear garden
- Recently refurbished kitchen and bathroom
- Close to transport links

# In Detail

Nestled on the charming Howberry Road, this delightful mid-terrace Victorian house offers a perfect blend of classic elegance and modern convenience. Spanning an impressive 1,026 square feet, the property boasts three well-proportioned bedrooms, making it an ideal home for families or those seeking extra space.

Upon entering, you are greeted by a warm and inviting reception room, complete with a working fireplace that adds a touch of character and warmth to the living space. The recently renovated kitchen, featuring contemporary finishes and ample storage, is perfect for culinary enthusiasts. The bathroom has also been tastefully updated, ensuring a fresh and stylish environment.

One of the standout features of this property is the mature private garden, providing a serene outdoor retreat for relaxation or entertaining guests. It is a wonderful space for children to play or for gardening enthusiasts to cultivate their green thumbs.

Conveniently located, the house is within easy reach of both Thornton Heath and Crystal Palace Stations, offering excellent transport links to central London and beyond. This makes it an ideal choice for commuters who wish to enjoy the tranquility of suburban living while remaining connected to the vibrant city life.

This Victorian gem retains much of its original charm while benefiting from modern updates. With its desirable location, spacious layout, and inviting features, this property is a must-see for anyone looking for a long term home to make their own.

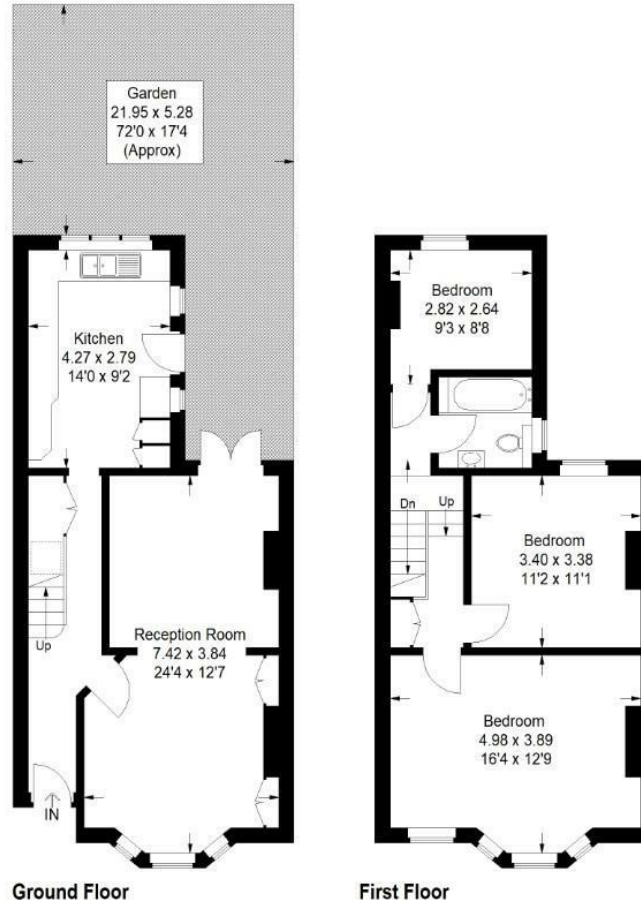
EPC: D | Council Tax Band: D



# Floorplan

Howberry Road, CR7

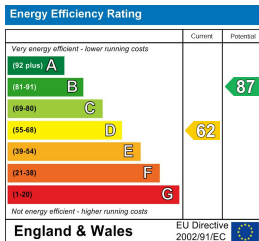
Approximate Gross Internal Area  
95.3 sq m / 1026 sq ft



— = Reduced headroom below 1.5 m / 5'0"

Copyright www.pedderproperty.com © 2026

These plans are for representation purposes only as defined by RICS - Code of Measuring Practice. Not drawn to Scale. Windows and door openings are approximate. Please check all dimensions, shapes and compass bearings before making any decisions reliant upon them.



Pedder Property Ltd trading as Pedder for themselves and for the vendor/landlord of this property whose agents they are, give notice that (1) these particulars do not constitute any part of an offer or contract, (2) all statements contained within these particulars are made without responsibility on the part of Pedder or the vendor/landlord, (3) whilst made in good faith, none of the statements contained within these particulars are to be relied upon as a statement of representation or fact, (4) any intending purchaser/tenant must satisfy him/herself by inspection or otherwise as to the correctness of each of the statements contained within these particulars, (5) the vendor/landlord does not make or give either Pedder or any person in their employment any authority to make or give representation or warranty whatsoever in relation to this property.