

Location:

Habington House is located between South Acton station (Overground) and Acton Town station (Piccadilly, District and Circles lines) while also being within walking distance of Acton Mainline station for the Elizabeth Line.

Key points:

- Two bedroom apartment
- Two bathroom (one en-suite)
- Third floor
- Private terrace
- Circa 800 sq.ft
- Ample storage throughout
- Fantastic transport links
- Chain free

Do Better:

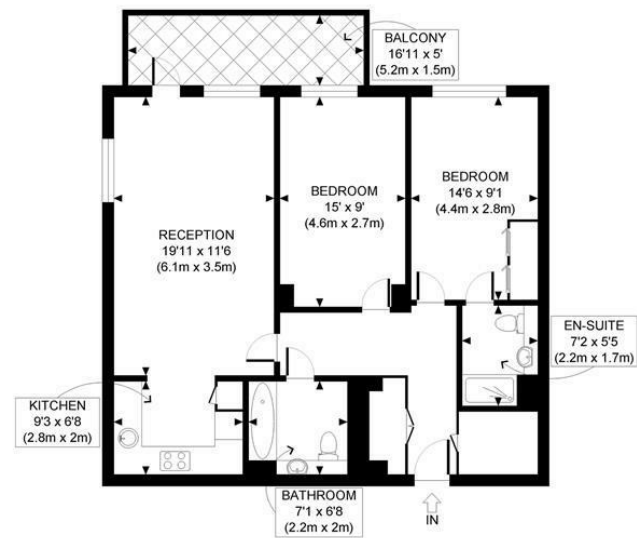
Acton

sales@astonrowe.co.uk

57-59 Churchfield Road, Acton, London, W3 6AY

020 8992 3600

Aston Rowe



THIRD FLOOR
GROSS INTERNAL
FLOOR AREA 821 SQ FT

APPROX. GROSS INTERNAL FLOOR AREA: 821 SQ FT/ 76 SQM

PROPERTY PHOTO PLANS.CO.UK
ONE STOP SHOP FOR PROPERTY MARKETING

This plan is for illustrative purposes only and should be used as such by any prospective client. Whilst every attempt has been made to ensure the accuracy of the Floor Plan contained here, measurements of the doors, windows, rooms and any other items are approximate and no responsibility is taken for any errors, omissions, or misstatement. The services, systems and appliances shown have not been tested and no guarantee as to the operability or efficiency can be given.

Energy Efficiency Rating		Environmental Impact (CO ₂) Rating	
Current	Potential	Current	Potential
85	85		

England & Wales EU Directive 2002/91/EC

£550,000

Avenue Road, London W3 8YP

- 1 Reception Rooms
- 2 Bedrooms
- 2 Bathrooms



A well presented two double bedroom, two-bathroom third floor apartment in Acton. The apartment comprises of a large, open plan kitchen/living space and balcony doors leading to a private balcony with lovely views. There are also two good sized double bedrooms, with the master offering an en-suite. Habington House is set just between South Acton station (Overground) and Acton Town station (Piccadilly, District and Circles lines) as well as easy access the M4/A4. Chiswick Park Station and The High Road are also within short walking distance.

The current owner says:

The apartment is in a fantastic location for the local shops, parks, schools, and transport links.

What's better:

A well presented two double bedroom, two-bathroom third floor apartment in South Acton.

