

PROSPECT

— LONDON —

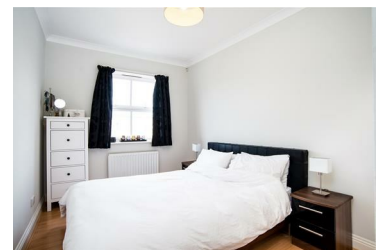


66 Leathermarket Court, London, SE1 3HS

£1,800 Per month



A two floor two bedroom apartment in secure gated development close to London Bridge.



- GATED DEVELOPMENT
- TOP FLOOR
- SPACIOUS SEPARATE LOUNGE
- COMMUNAL GARDENS
- ALLOCATED PARKING
- UNFURNISHED/UNFURNISHED
- CLOSE TO LONDON BRIDGE