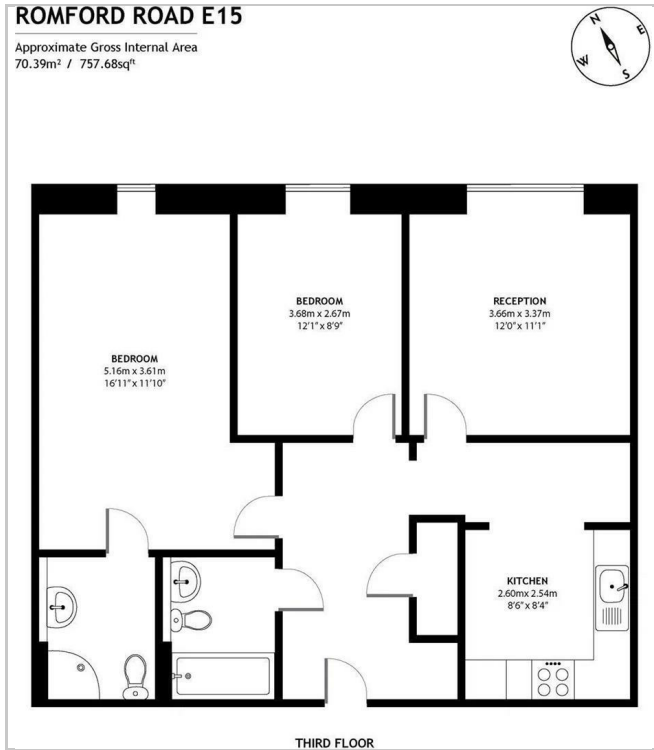




Romford Road, London, E15 E15  
£2,250



## Floor Plan



## Accommodation

REF: TJL053182

\*\* All enquiries or viewing requests should be submitted online via this advert - Thank you \*\*

A fantastically proportioned two double bedroom flat set within this prestigious development in the heart of Stratford. Ideally positioned on the third floor and boasting high ceilings throughout the property consists of two double bedrooms, well equipped open-plan kitchen/reception room and two bathrooms (one ensuite). Further benefits include ample storage and use of an on-site gymnasium. The Quadrangle is located on Romford Road ideally positioned for the vast array of transport facilities Stratford provides. Westfield Shopping Centre and the Olympic Park are also nearby.

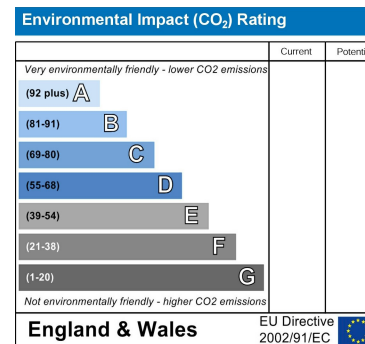
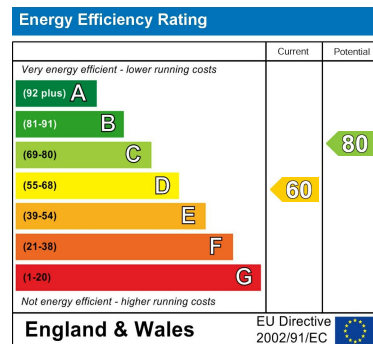
- Price - rent £2250
- Deposit £2596.15
- Length of tenancy (12 months min)
- Council tax band - C
- EPC - D



## Area Map



## Energy Efficiency Graph



Please contact the HAUZOO office if you wish to arrange a viewing appointment for this property or require further information.  
HAUZOO, 3rd Floor 86-90 Paul Street, London, EC2A 4NE  
Tel: 02038784479 Email: enquiries@hauzoo.co.uk <https://www.hauzoo.co.uk>

These particulars, whilst believed to be accurate are set out as a general outline only for guidance and do not constitute any part of an offer or contract. Intending purchasers should not rely on them as statements of representation of fact, but must satisfy themselves by inspection or otherwise as to their accuracy. No person in this firm's employment has the authority to make or give any representation or warranty in respect of the property.