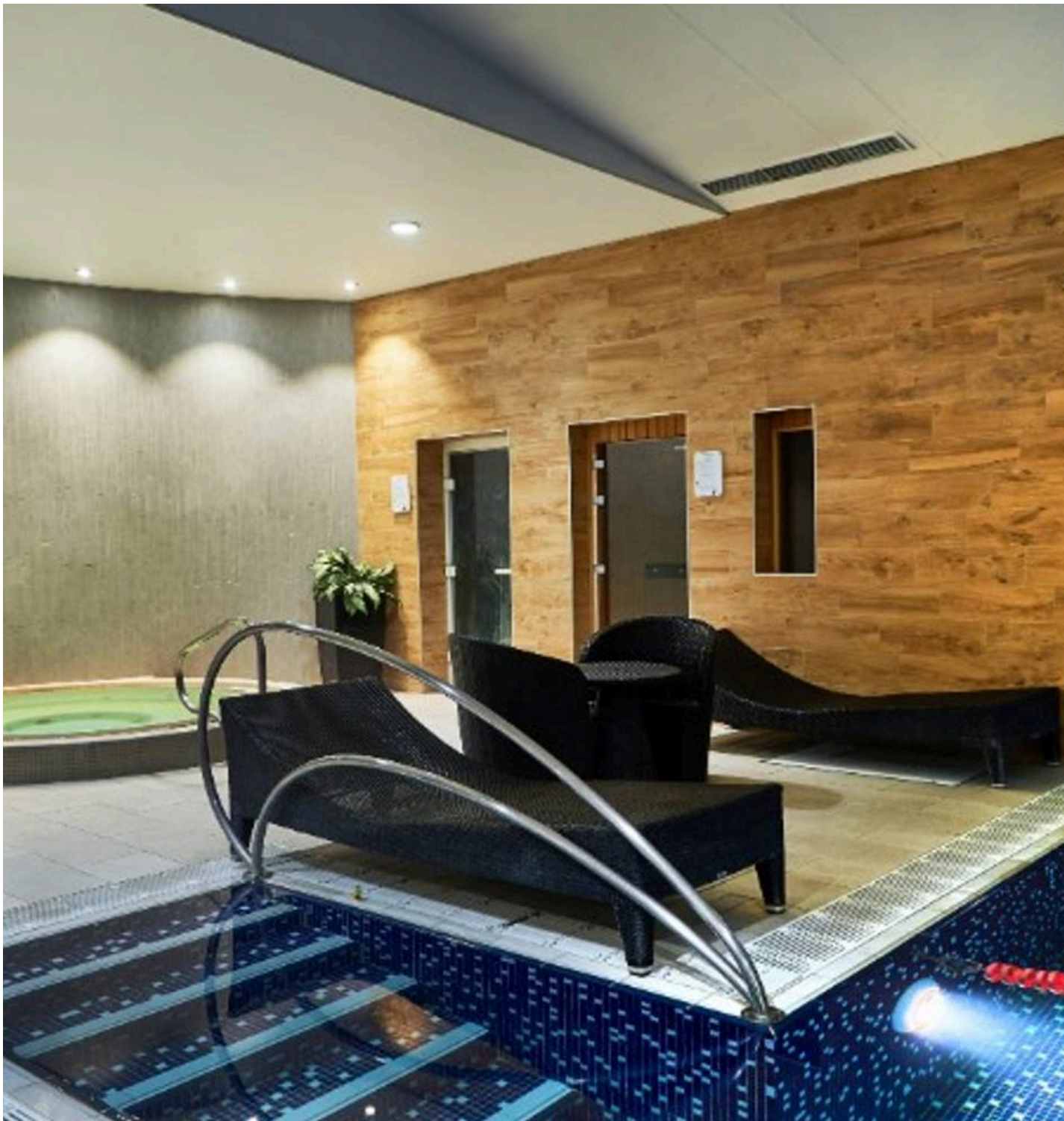




Flat 24, Larch Court Admiral Walk, London

London

£2,450 pcm



Flat 24

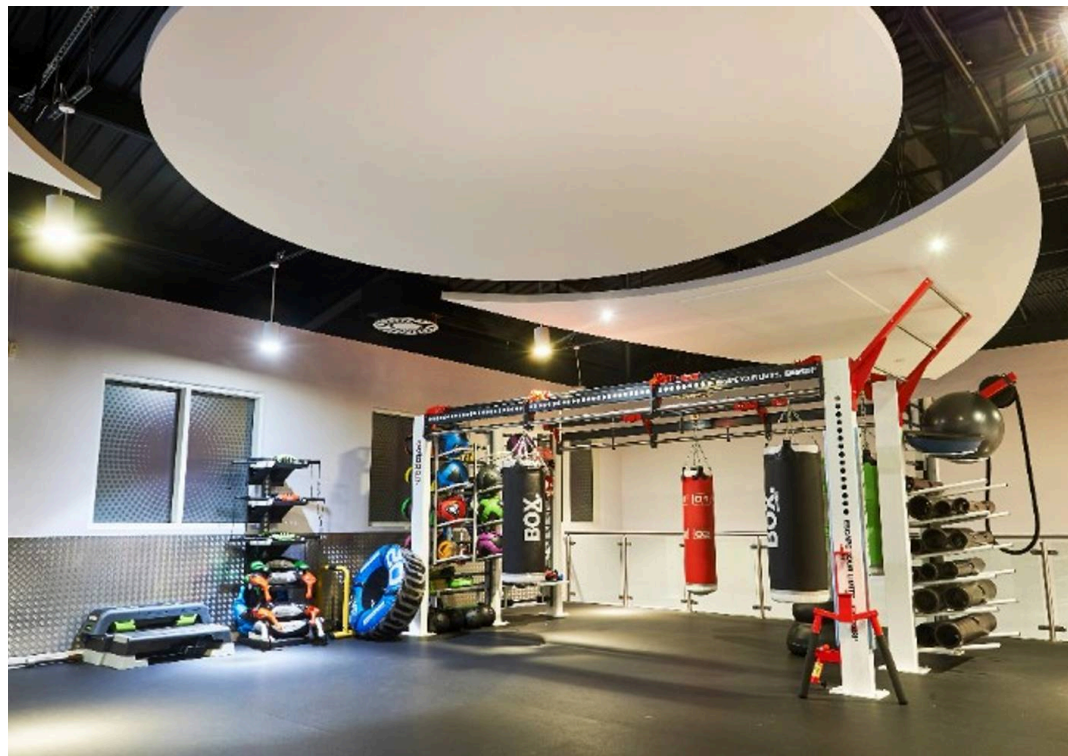
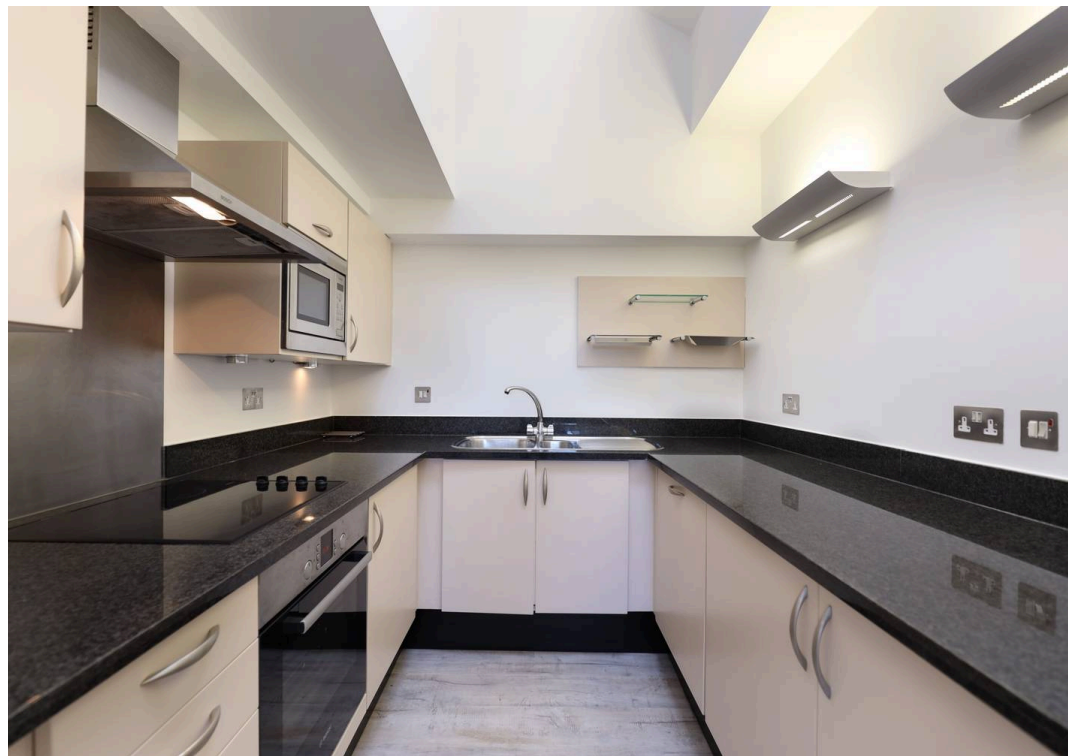
Larch Court Admiral Walk, London

Luxurious 1-bed penthouse in Carlton Gate development with exclusive access to The Harbour Club. Canal side private garden, double height ceilings, modern kitchen/bathroom, 24/7 security, underground parking. Ideal blend of sophistication, comfort, and convenience. Council Tax band: E

Tenure: Leasehold

EPC Energy Efficiency Rating: C

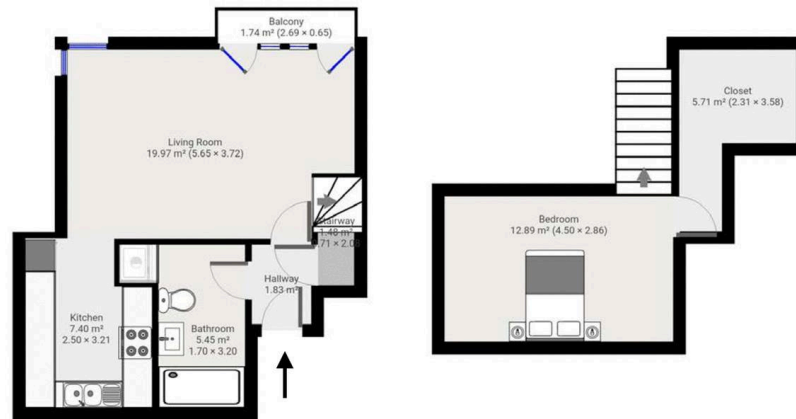
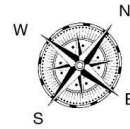
EPC Environmental Impact Rating: D





Larch Court,
Admiral Walk,
W9 3UA

Approximate Gross Internal Area 70.4 sqm / 758 sqft



5th Floor

THIS FLOOR PLAN IS PRODUCED FOR GARRISON ESTATES SUBMITTED BY ARCHIMEDIA web: www.archi-media.co.uk

Whilst every attempt has been made to ensure the accuracy of the floor plan contained here, measurements of doors, windows and rooms are approximate and no responsibility is taken for any error, omission or misstatement. These plans are for representation purposes only and should be used as such by any prospective buyer or leasee. Specifically no guarantee is given on the gross internal floor area of the property if quoted on this plan and any figures given is initial guidance only and should be treated as such.



Garrison Estates

20 College Parade, Salusbury Road, Queens Park - NW6 6RN

020 4511 4820 • contact@garrisonestates.co.uk • www.garrisonestates.co.uk/