



Symonds  
& Sampson

# Birch House

4 West Mead, Bridport, Dorset

# Birch House

4 West Mead  
Bridport  
Dorset DT6 5RU

Handsome five bedroom townhouse with country views  
just a short step into Bridport town centre



- Walking distance to local town
- Modern character property
- Spacious accommodation
  - Double garage



Guide Range £600,000 - £650,000

Freehold

Bridport Sales  
01308 422092  
[bridport@symondsandsampson.co.uk](mailto:bridport@symondsandsampson.co.uk)



## THE DWELLING

Birch House is a perfect combination of character, efficiency, flexibility and position. Although the property was built in just 1999, the property has all the character of a period property – the front brickwork is a particular highlight – with all the advantages and cost savings of a contemporary house all rolled into one. Add to that some flexible accommodation spread over three floors that allows each part to be used in a different way and a position that is a short step into the town or out into the country and Birch House really is a mouthwatering prospect.

## ACCOMMODATION

The accommodation is simply laid out around a central hallway with a cloakroom off with a sitting room to one side and a kitchen/dining room to the other. The sitting room centres around an attractive stone fireplace equipped with a gas woodburner style stove with double doors into a substantial conservatory that looks out over the gardens behind. The kitchen dining room has a dining area to one end and a lovely contemporary kitchen to the other with an island unit to its centre. The kitchen is equipped with a Mercury range cooker, integrated fridge freezer and dishwasher. The worktops are granite and there is an attractive yet practical double butler sink. Off the kitchen a door leads through to a useful utility room with space for another fridge freezer and plumbing for both a washing

machine and a tumble dryer.

The five bedrooms are arranged over the two floors above with the principal room mirroring the sitting room below with an ensuite shower room and space for two substantial wardrobes. There are two further bedrooms on the first floor and two on the floor above all sharing a family bathroom equipped with a shower over the bath.

The property is in immaculate decorative order throughout, has gas fired central heating, contemporary double glazing, an intruder alarm system and a water softener.

## OUTSIDE

To the rear of the property there is a beautifully laid out landscaped garden organised to be free of maintenance with two terraced sitting areas and architectural planting - the herbs have done particularly well this year. The gardens face north however as they are raised the gardens are sunny throughout the day and are particularly good for sundowners at the end of the day. To the end of the garden a doorway leads through two spacious larger than average sized double garage equipped with up and over doors, one of which is electric with substantial storage area in the roof void. Off-road parking is provided within the garage however an agreement with the neighbour allows a car to be parked outside the garage itself and there is plenty of on street parking immediately to the front of the property.

## SITUATION

All of this is within easy reach of Bridport's vibrant town centre, excellent local schools, countryside walks, and the Jurassic Coast. Offered chain free, this is a rare opportunity to acquire a substantial character family home in one of Bridport's most desirable residential settings.

## DIRECTIONS

What3words:///staining.loafing.grandest

## SERVICES

Mains gas, electricity, water and drainage. Gas central heating.

Broadband - Superfast speed available.

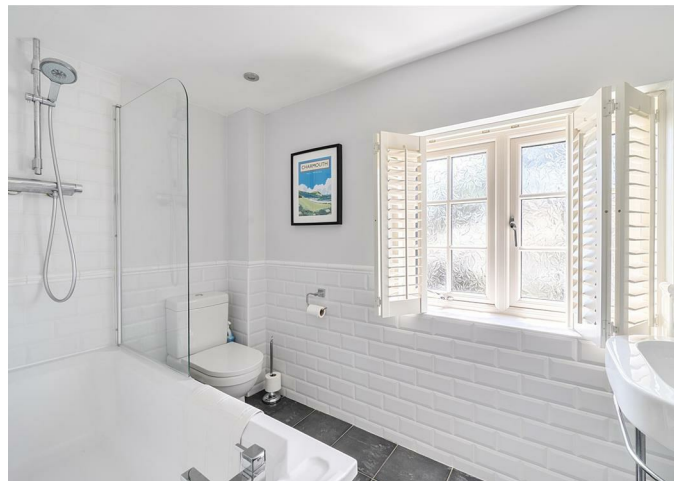
Mobile - There is mobile coverage in the area, please refer to Ofcom's website for more details.

EPC: C

## LOCAL AUTHORITY

Dorset Council - 01305 251010

Tax Band: F



Energy Efficiency Rating		Current	Potential
Very energy efficient (lowest running costs)			
A	92-100	74	47
B	81-91		
C	69-80		
D	55-68		
E	39-54		
F	22-38		
G	1-21		
Minimum energy efficient rating			
England & Wales		EU Directive 2002/91/EC	

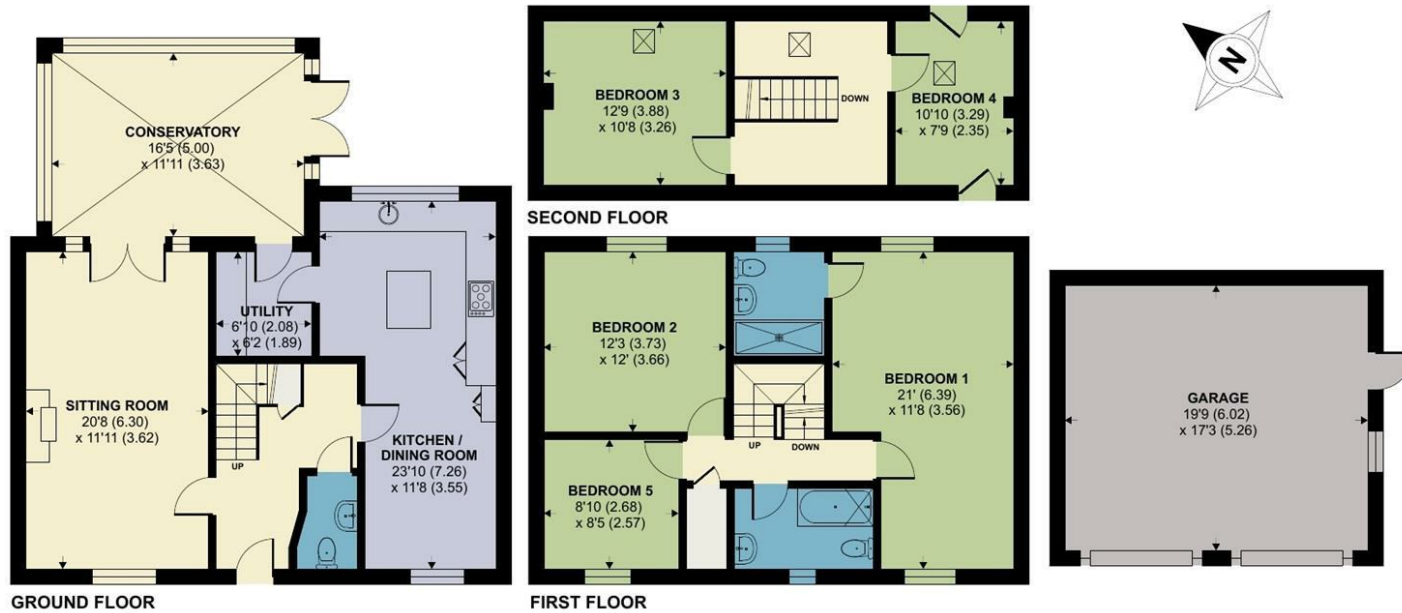
## West Mead, Bridport

Approximate Area = 1861 sq ft / 172.8 sq m

Garage = 341 sq ft / 31.6 sq m

Total = 2207 sq ft / 204.4 sq m

For identification only - Not to scale



Floor plan produced in accordance with RICS Property Measurement 2nd Edition, Incorporating International Property Measurement Standards (IPMS2 Residential). © nichecom 2026. Produced for Symonds & Sampson. REF: 1487051



Bridport/SVA/09072026



01308 422092

bridport@symondsandsampson.co.uk  
Symonds & Sampson LLP  
23, South Street,  
Bridport, Dorset DT6 3NU



**Important Notice:** Symonds & Sampson LLP and their clients give notice that they have no authority to make or give any representations or warranties regarding the property. These particulars do not form part of any offer or contract and must not be relied upon as statements of fact. Some descriptions and images may have been AI-assisted; while reviewed for accuracy, interested parties should verify key details through inspection or by contacting our agents. All measurements and distances are approximate. Text, photographs, and plans are for guidance only and may not be comprehensive. It should not be assumed that the property has all necessary planning or regulatory consents, and no services, equipment, or facilities have been tested. No investigations have been made into pollution or contamination; purchasers must make their own enquiries. The property is sold subject to all existing wayleaves, easements, and rights of way (public or private), whether mentioned or not. Vendors are not required to define such rights.