



Homecross House, London, W4 1YA

£315,000

**WHITMAN & CO.**

SALES · LETTINGS · COMMERCIAL

- Bright and airy first floor apartment
- Bathroom with walk-in shower
- Host of communal facilities
- Kitchen with window
- Newly decorated and carpeted
- Close to numerous amenities

Tenure - Leasehold  
 Lease Length - 58 years remaining  
 Ground Rent - £511.20 pa  
 Service Charge - £2,807 pa  
 Local Authority - Hounslow  
 Council Tax - Band D

## THE PROPERTY

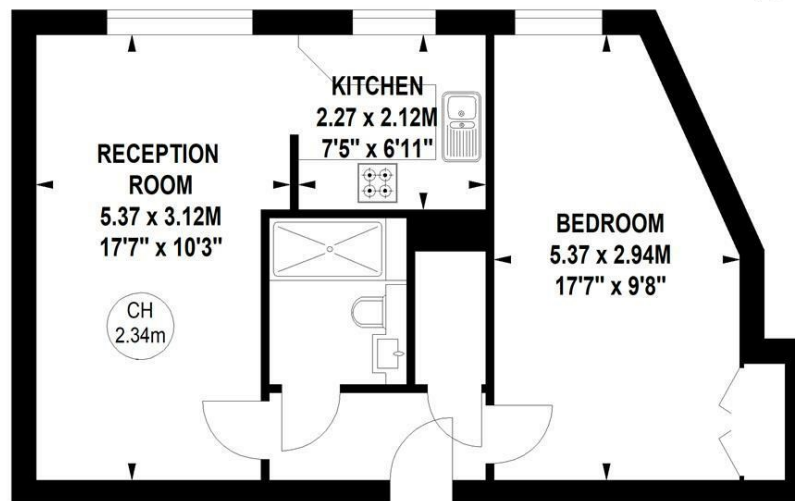
A bright and airy south-facing first-floor apartment overlooking communal gardens located in this sought-after retirement complex in the centre of Chiswick close to shops and transport. The flat is newly decorated and carpeted whilst also benefitting from a replacement kitchen and bathroom. The accommodation comprises a 17'6" reception room, a fitted kitchen with window, newly fitted bathroom with walk-in shower, double bedroom with fitted wardrobe and storage cupboard. Communal facilities include a large residents lounge, private gardens, laundry room, lift access, residents off street parking, house manager and emergency response cover. Homecross House is located just north of Chiswick High Road offering close proximity to shops, cafes, restaurants, parks, two tube stations and numerous bus routes. No onward chain.

## Homecross House, W4

Approximate gross internal area

44.41 sq m / 478 sq ft

Key :  
 CH - Ceiling Height



### First Floor

Not to scale, for guidance only and must not be relied upon as a statement of fact.  
 All measurements and areas are approximate only

## SITUATION



5-7 Turnham Green Terrace, Chiswick, London, W4 1RG

Tel 020 8747 8800

E-mail sales@whitmanandco.com

Website www.whitmanandco.com