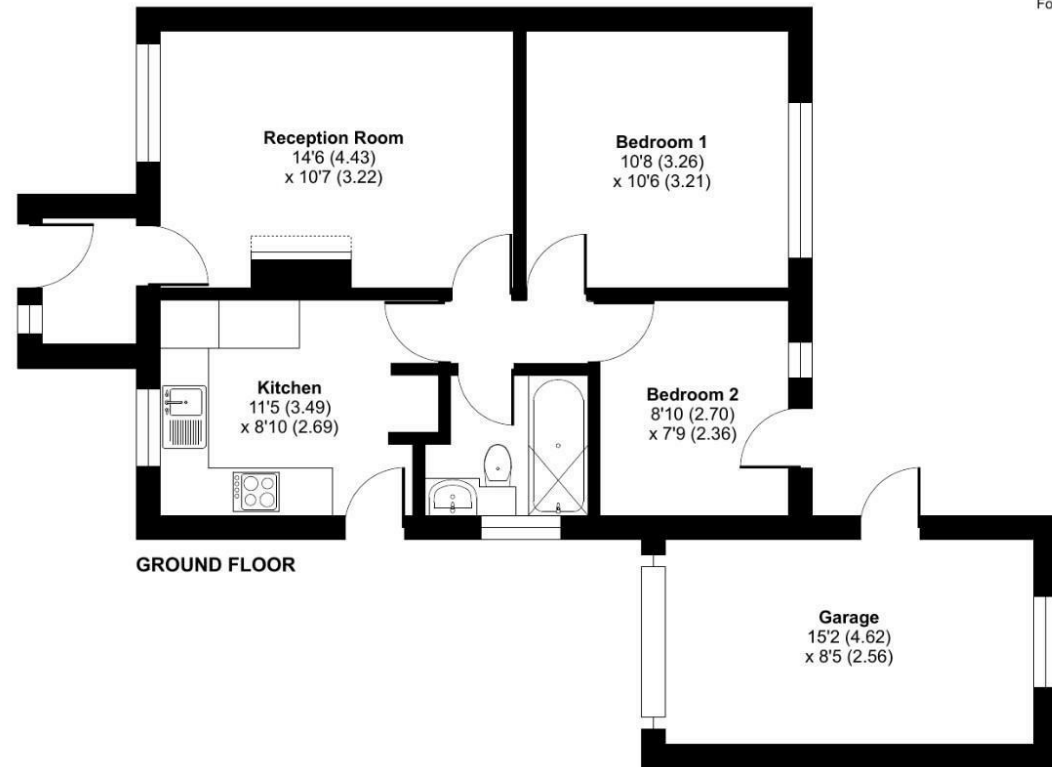


FOR SALE

30 Dolforgan View, Kerry, Newtown, SY16 4DZ



Approximate Area = 540 sq ft / 50.2 sq m  
 Garage = 127 sq ft / 11.8 sq m  
 Total = 667 sq ft / 62 sq m  
 For identification only - Not to scale



Floor plan produced in accordance with RICS Property Measurement 2nd Edition, incorporating International Property Measurement Standards (IPMS2 Residential). © nichecom 2026. Produced for Halls. REF: 1472784



FOR SALE

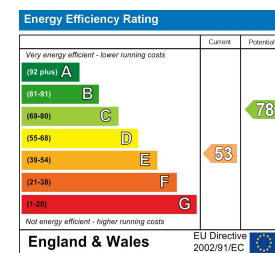
Offers in the region of £200,000

30 Dolforgan View, Kerry, Newtown, SY16 4DZ

**Property to sell?** We would be delighted to provide you with a free no obligation market assessment of your existing property. Please contact your local Halls office to make an appointment. **Mortgage/financial advice.** We are able to recommend a completely independent financial advisor,

who is authorised and regulated by the FCA. Details can be provided upon request. **Do you require a surveyor?** We are able to recommend a completely independent chartered surveyor. Details can be provided upon request.

Energy Performance Rating



Situated in a peaceful cul de sac, this comfortable two bedroom bungalow offers a compact yet comfortable layout and a delightful rear garden

Located on the outskirts of the sought after village of Kerry, it lies just three miles from the centre of Newtown

With off road parking for at least two vehicles and the added benefit of a garage, the property is an attractive opportunity for both owner occupiers and investors



01938 555552

Welshpool Sales  
 14 Broad Street, Welshpool, Powys, SY21 7SD  
 E: welshpool@hallsgb.com



IMPORTANT NOTICE. Halls Holdings Ltd and any joint agents for themselves, and for the Vendor of the property whose Agents they are, give notice that: (i) These particulars are produced in good faith, are set out as a general guide only and do not constitute any part of a contract (ii) No person in the employment of or any agent of or consultant to Halls Holdings has any authority to make or give any representation or warranty whatsoever in relation to this property (iii) Measurements, areas and distances are approximate, Floor plans and photographs are for guidance purposes only (photographs are taken with a wide angled / zoom lenses) and dimensions shapes and precise locations may differ (iv) It must not be assumed that the property has all the required planning or building regulation consents. Halls Holdings, Bowmen Way, Shrewsbury, Shropshire SY4 3DR. Registered in England 06597073.



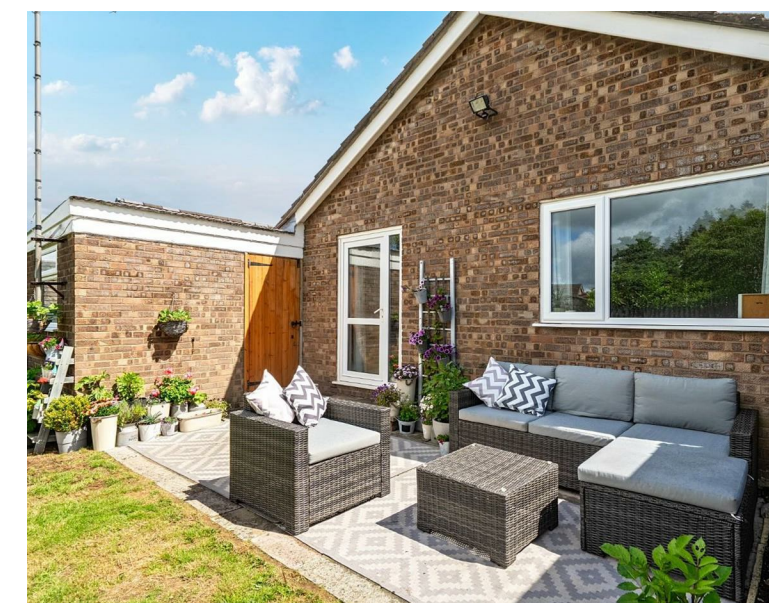
1 Reception Room/s



2 Bedroom/s



1 Bath/Shower Room/s



- Two bedroom bungalow with comfortable layout
- Peaceful cul de sac setting in quiet location on the edge of Kerry
- Delightful rear garden
- Off road parking

**SITUATION**

Positioned on the A489, 2.8 miles south east of Newtown, Kerry provides a useful range of local amenities including two pubs, a church, village hall, bowling green, post office, village store, and a primary school

Transport links are excellent, with easy access by car or bus to the town centre and the Newtown bypass via Llanidloes Road. Newtown railway station is a key stop on the Cambrian Line, offering eastbound services to Shrewsbury and Birmingham, and westbound connections to Machynlleth, Aberystwyth, and Pwllheli

**SCHOOLS**

Families are well served by a strong choice of schools in and around Newtown

Several primary options lie within easy reach, including Ysgol Dafydd Llwyd, a well regarded Welsh medium school, and Maesyrrhandir C.P. School, both situated on the western side of town. Ysgol Calon y Dderwen, close to the town centre, offers another accessible primary alternative. For older pupils, Newtown High School provides comprehensive secondary education for ages 11-18, while Brynllwarch Hall School in nearby Kerry offers specialist provision in a supportive rural setting

Together, these schools create a well rounded educational landscape within just a few miles of the property

**DESCRIPTION**

Arriving onto the front drive, this compact and well presented two bedroom bungalow is beautifully framed by the green hills that rise above the popular village of Kerry

Comfortable and easy to manage (and far more economical to heat than a larger home) the property features a good sized lounge diner to the front, complete with an open fireplace

The kitchen includes a handy breakfast bar and direct access to the side driveway

Both bedrooms sit to the rear; one is currently used as an office and benefits from direct access to the garden

**EXTERNALLY**

A neat front garden sets the tone, while the enclosed rear garden is a real delight, offering a private paved patio for relaxing and enjoying views of the hills opposite and a lawn that incorporates a well designed, productive vegetable plot

**SERVICES**

Mains electricity, water, drainage and oil central heating are connected at the property. None of these services have been tested by Halls.

**LOCAL AUTHORITY/TAX BAND**

Powys County Council, Ty Maldwyn, Brook Street, Welshpool, SY21 7PH. Telephone: 01938 553001

The property is in band 'D'

**DIRECTIONS**

Postcode for the property is SY16 4DZ

What3Words Reference is alarm.rods.slopes

**VIEWINGS**

Strictly by appointment only with the selling agents: Halls, 14 Broad Street, Welshpool, Powys, SY21 7SD.

**Anti Money Laundering Checks**

We are legally obligated to undertake anti-money laundering checks on all property purchasers. Whilst we are responsible for ensuring that these checks, and any ongoing monitoring, are conducted properly; the initial checks will be handled on our behalf by a specialist company, Movebutler, who will reach out to you once your offer has been accepted.

The charge for these checks is £30 (including VAT) per purchaser, which covers the necessary data collection and any manual checks or monitoring that may be required. This cost must be paid in advance, directly to Movebutler, before a memorandum of sale can be issued, and is non-refundable. We thank you for your cooperation.

**WEBSITES**

Please note all of our properties can be viewed on the following websites:  
[www.hallsgb.com](http://www.hallsgb.com)  
[www.rightmove.co.uk](http://www.rightmove.co.uk)  
[www.onthemarket.com](http://www.onthemarket.com)