



CHERRY BLOSSOM CLOSE | | BOWES | N13 6BT

£1,800 PER MONTH

LIVINGS  
LIVINGSPACE  
ESTATE AGENTS

CHERRY BLOSSOM CLOSE |

BOWES | N13 6BT

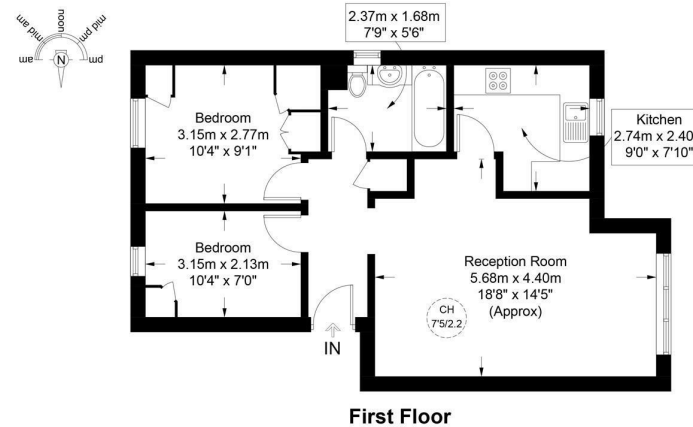
£1,800 PER MONTH

LIVING SPACE ARE PLEASED TO OFFER THIS LOVELY 2 BEDROOM FIRST FLOOR PURPOSE BUILT FLAT SITUATED IN A GREAT LOCATION AND WITHIN EASY ACCESS TO THE A406 AND CLOSE TO ALL AMENITIES AND TRANSPORT LINKS INTO THE CITY. THIS PROPERTY IS OFFERED FURNISHED, NEUTRALLY DECORATED THROUGHOUT, NEWLY FITTED KITCHEN, MODERN BATHROOM AND COMES WITH ONE OFF STREET PARKING. AVAILABLE 1ST OCTOBER

- FLAT - FURNISHED
- 1 BATHROOM
- NO SPECIAL ACCESSIBILITY
- GAS CENTRAL HEATING
- 2 BEDS + 1 RECEPTION
- ENERGY RATING : C
- NO PARKING

Cherry Blossom Close, N13

Approximate Gross Internal Area = 594 sq ft / 55.2 sq m



LIVINGSPACE

This plan is for layout guidance only and is not drawn to scale unless stated. All dimensions, including windows, doors, and the Total Gross Internal Area (GIA), are approximate. For precise measurements, please consult a qualified architect or surveyor before making any decisions based on this plan.

RICS  
Certified  
Property  
Measurer

Energy Efficiency Rating		Current	Potential
Very energy efficient - lower running costs			
(92 plus) A			
(81-91) B			
(69-80) C			
(55-68) D			
(39-54) E			
(21-38) F			
(1-20) G			
Not energy efficient - higher running costs			
England & Wales		EU Directive 2002/91/EC	

COUNCIL TAX BAND C  
EPC RATING

105 ST PAULS ROAD  
ISLINGTON  
LONDON  
N1 2NA  
020 7354 0505  
INFO@LSEA.CO.UK