



Buckleigh Way, SE19 | £2,750 Per Calendar Month

020 8702 9333

crystalpalace@pedderproperty.com

pedder
We live local



In General

- Four bedroom Townhouse
- Drive way
- En-suite bathroom
- Naturally bright
- Cul de sac location
- Available immediately
- Unfurnished

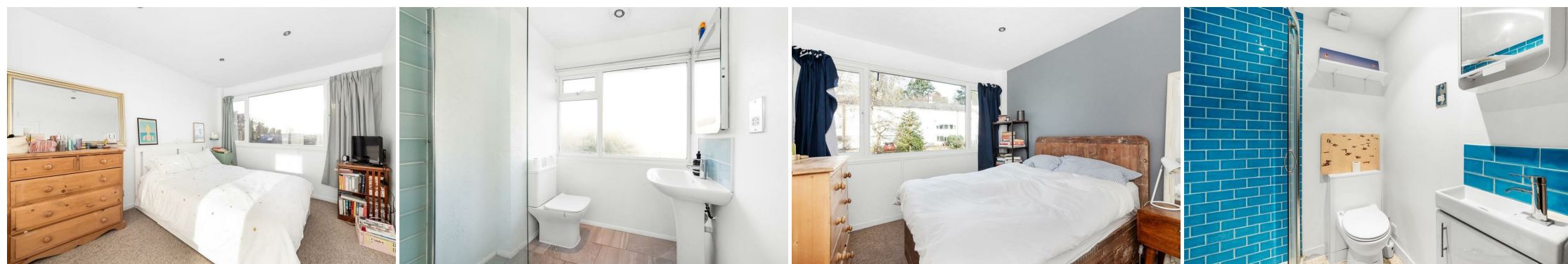
In Detail

A light, bright and well presented four bedroom, two bathroom mid-century townhouse arranged over three levels and forming part of a small cul de sac in a sought after location nearby central Crystal Palace to rent.

The ground floor houses entrance hallway, double bedroom with storage and a en-suite shower room with toilet making it ideal for visiting family members or to be used as a comfortable work from home office. Whilst the first floor accommodates the bright open plan reception / dining area and kitchen overlooking the rear garden. Other features include three further bedrooms on the top floor, along with a modernised bathroom with walk-in shower (only), pleasant views, and off street parking.

These properties are usually popular with families and this house could make for a spacious long-term rental, affording access to Crystal Palace or Gipsy Hill rail links and a wealth of shopping and leisure facilities at the Triangle.

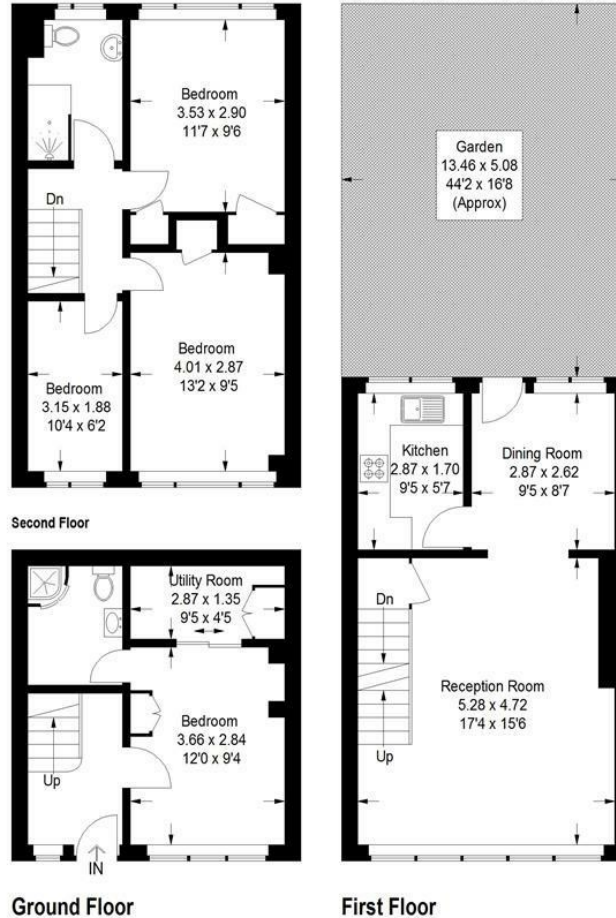
EPC: D | Council Tax: Croydon, band E | HD: £634.61 | SD: £3,173.07 | Offered unfurnished | Available immediately



Floorplan

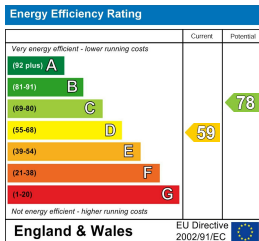
Buckleigh Way, SE19

Approximate Gross Internal Area
 Ground Floor = 24.6 sq m / 265 sq ft
 First Floor = 39.8 sq m / 428 sq ft
 Second Floor = 39.7 sq m / 427 sq ft
 Total = 104.1 sq m / 1120 sq ft



Copyright www.pedderproperty.com © 2024

These plans are for representation purposes only as defined by RICS - Code of Measuring Practice
 Not drawn to Scale. Windows and door openings are approximate. Please check all dimensions,
 shapes and compass bearings before making any decisions reliant upon them.



Pedder Property Ltd trading as Pedder for themselves and for the vendor/landlord of this property whose agents they are, give notice that (1) these particulars do not constitute any part of an offer or contract, (2) all statements contained within these particulars are made without responsibility on the part of Pedder or the vendor/landlord, (3) whilst made in good faith, none of the statements contained within these particulars are to be relied upon as a statement of representation or fact, (4) any intending purchaser/tenant must satisfy him/herself by inspection or otherwise as to the correctness of each of the statements contained within these particulars, (5) the vendor/landlord does not make or give either Pedder or any person in their employment any authority to make or give representation or warranty whatsoever in relation to this property.