



Princes Road, SE20 | Offers In Excess Of £600,000

02087029777

sydenham@pedderproperty.com

pedder
We live local



In General

- Beautifully presented Alexandra Cottage
- Bright and spacious through lounge
- Superb kitchen
- Two double bedrooms
- Boutique bathroom
- Landscaped rear garden
- Excellent transport links
- No onward chain

In Detail

A stunning, beautifully presented two bedroom cottage, located within the highly sought after Alexandra Cottages, one of Penge's most charming and characterful spots. Bright and surprisingly spacious throughout, this charming home is perfectly positioned for excellent transport links, green open spaces and a plenty of independent coffee shops, restaurants and amenities.

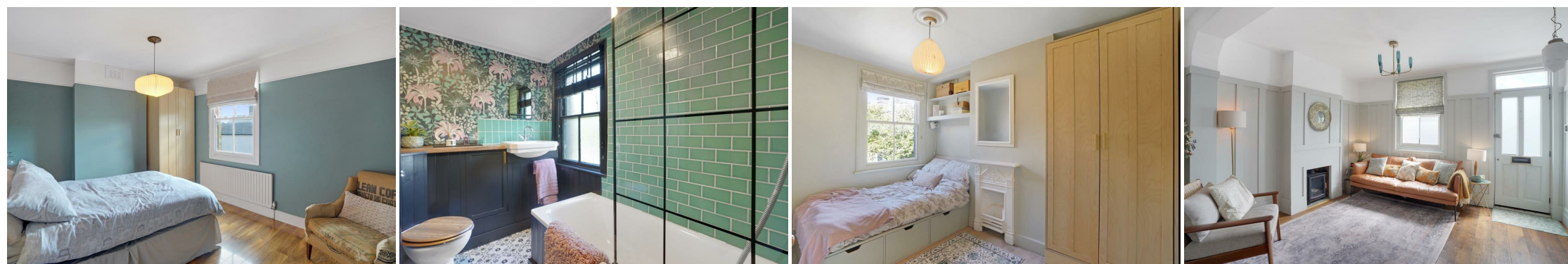
Thoughtfully redesigned and beautifully curated, the interiors showcase a blend of natural materials, rich textures and earthy tones, creating a home that feels both stylish and inviting. Every room has been carefully considered, resulting in an eclectic yet harmonious aesthetic that is warm, calm and effortlessly elegant.

The reception and dining rooms have been opened up to create a wonderful space to lounge, Oak floorboards run throughout, panelled walls and alcove shelving add character, and a wood burner provides a lovely focal point and cosy atmosphere. Generous proportions and an abundance of natural light enhance the feeling of space, making this an ideal setting for both everyday living and entertaining. The kitchen itself is a particular highlight, combining reclaimed cabinetry with contemporary finishes to striking effect. Beautifully crafted and highly functional, it offers ample storage, fitted appliances and generous work surfaces, with a statement marble splashback that perfectly complements the design. Upstairs are two double bedrooms and a gorgeous boutique style bathroom offering an indulgent retreat at the end of the day.

Outside, the landscaped rear garden has been thoughtfully designed for low maintenance enjoyment, featuring a generous patio area perfect for al fresco dining.

Princes Road is a particularly attractive residential street steeped in character and history, forming part of the much loved Alexandra Cottages community. The location offers excellent transport links , with Penge East, Penge West and Sydenham stations all within easy reach.

EPC:C | Council Tax Band:C




Floorplan

Princes Road, SE20

Total* = 64.6 sq. m / 694.8 sq. ft

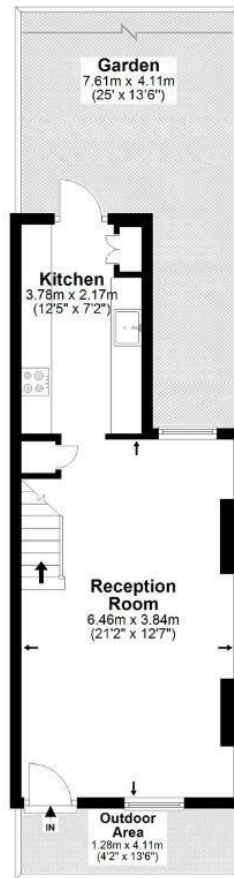
First Floor = 31.3 sq. m / 336.6 sq. ft

Ground Floor = 33.3 sq. m / 358.3 sq. ft

 = Reduced head room below 1.5m



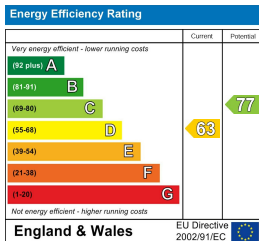
Ground Floor



First Floor



*All measurements are approximate and do not include eaves space. The plans are for representation purposes only as defined by RICS - 'Code of Measurement Practice'. The plans are not to scale. Please personally check all sizes, dimensions, shapes and compass bearings before making any decisions reliant upon them. Copyright The Pedder Group © 2026.



Pedder Property Ltd trading as Pedder for themselves and for the vendor/landlord of this property whose agents they are, give notice that (1) these particulars do not constitute any part of an offer or contract, (2) all statements contained within these particulars are made without responsibility on the part of Pedder or the vendor/landlord, (3) whilst made in good faith, none of the statements contained within these particulars are to be relied upon as a statement of representation or fact, (4) any intending purchaser/tenant must satisfy him/herself by inspection or otherwise as to the correctness of each of the statements contained within these particulars, (5) the vendor/landlord does not make or give either Pedder or any person in their employment any authority to make or give representation or warranty whatsoever in relation to this property.