



## Anthus Mews, Northwood £1,895 pcm

[www.deykingharia.co.uk](http://www.deykingharia.co.uk)  
Tel: 01923 831 020  
45 Langley Way, WD17 3EA

A spacious two double bedroom two bathroom first floor apartment spanning 802 square feet situated in a private cul-de-sac and having been refurbished internally.

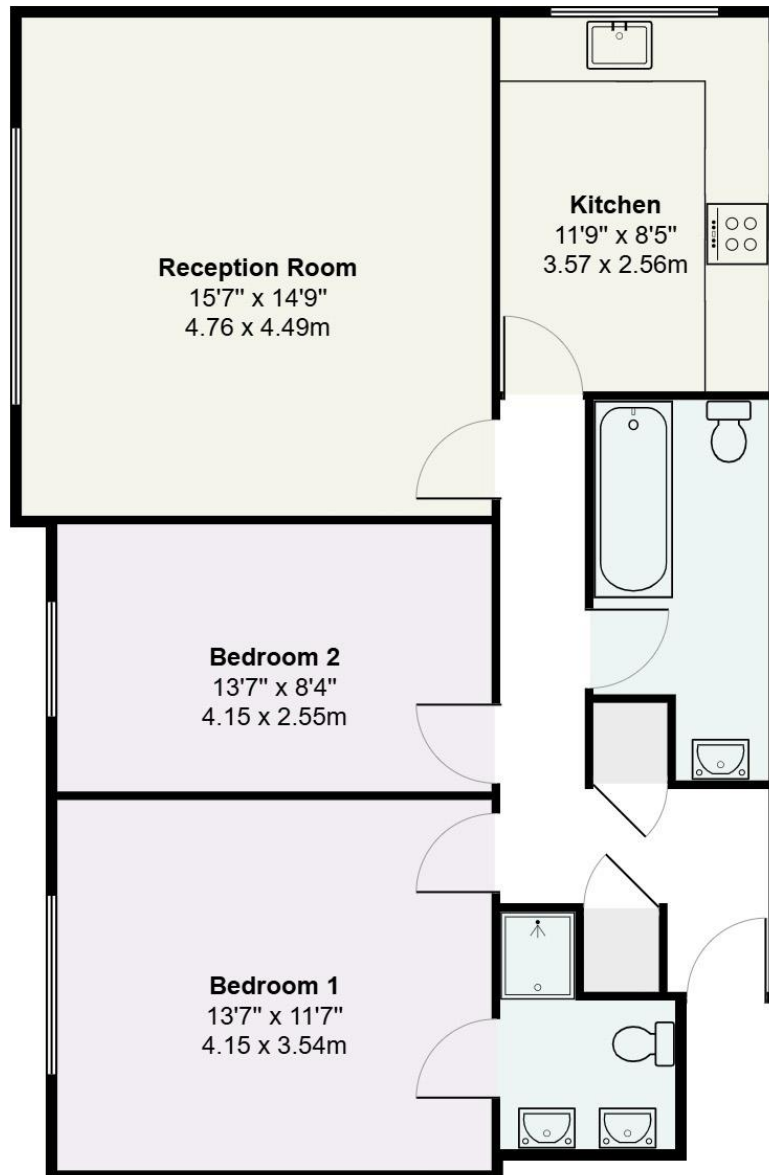
The accommodation comprises an entrance hallway with access to two storage cupboards. Leading off the hallway is the large reception/ dining room and a separate fully fitted kitchen. There are two double bedrooms with the principal bedroom having an en-suite shower room and a further three piece bathroom off the hallway. The flat has new carpets and been redecorated throughout. Externally the property is surrounded by communal gardens and comes with its own garage as well as off street parking.

Anthus Mews is located within walking distance of Northwood Underground train station (Metropolitan Line) which provides direct and frequent access into central London. There are also many local amenities including a Waitrose supermarket, bars, coffee shops, restaurants and gyms.

The flat is available immediately on an unfurnished basis.







## Anthus Mews, Northwood

Approximate Gross Internal Area = 802 Sq Ft / 74.5 Sq M

This plan is not to scale and must be used as layout guidance only. All measurements and areas are approximate and should not be relied upon to provide accurate information. This plan must not be relied upon when making property valuations, design considerations or any other such relevant decisions. We accept no responsibility or liability (whether in contract, tort or otherwise) in relation to any loss whatsoever arising from or in connection with any use of this plan or the adequacy, accuracy or completeness of it or any information within it.