



20a Main Street, Prickwillow
Ely

RICHARD
BOOTH
ESTATE AGENTS 

£575,000

20a Main Street

Prickwillow, Ely

This impressive four bedroomed detached home offers over 2,000 sq ft of thoughtfully arranged accommodation, making it ideal for modern family living.

The property features four generous double bedrooms, two of which benefit from en-suite facilities, whilst the remaining bedrooms are served by a superb, refitted family bathroom. The heart of the home is a fantastic kitchen, dining, and family room, designed for both every-day living and entertaining, with ample space for dining and relaxation. A spacious lounge opens into an additional sitting area, creating a large and versatile living space that can easily accommodate a range of uses. Further ground floor accommodation includes a snug, perfect for quieter moments, and a flexible room currently used as an office or gym, catering to the demands of home working or fitness.

The outside space is equally impressive, with a well maintained garden to the rear that offers excellent privacy and a tranquil setting. The garden is mainly laid to lawn, providing plenty of space for children to play or for outdoor entertaining. An extended patio area, complete with a charming pergola adorned with climbing roses, creates a delightful spot for al fresco dining or relaxing in the sun. Well stocked and carefully tended borders add year-round interest and colour.



20a Main Street

Prickwillow, Ely

To the front of the property, an extensive gated driveway offers ample off street parking for multiple vehicles. The garage, although reduced in size to accommodate the office or gym, still provides excellent storage solutions for bikes, garden equipment, or seasonal items.

Throughout, the property has been maintained to a high standard, with tasteful décor and quality finishes and to fully appreciate the extent of the accommodation a viewing is highly recommended.

Council Tax Band: E

Tenure: Freehold

EPC Energy Efficiency Rating: C

- Individual Detached Home
- Extensive Accommodation Of Over 2,000 Sq Ft
- 4 Double Bedrooms (2 En-suite)
- Superb Kitchen/Dining/Family Room
- Spacious Lounge Opening Into Additional Sitting Area
- Snug & Office/Gym
- Well Maintained Garden Offering Excellent Privacy
- Backing Onto A Farm With Countryside View Beyond
- Driveway & Garage Suitable For Storage



Entrance Hall

With door to outside, stairs with understairs cupboard, tiled floor, radiator.

Cloakroom

With low level WC, wash basin, tiled floor, radiator.

Boot Room

With double glazed window to side, tiled floor, radiator.

Kitchen/Dining/Family Room

With double glazed windows to front and side, fitted with a range of wall and base level storage units with drawers and oak worksurfaces, butler sink, integrated dishwasher, fridge and freezer, Rangemaster oven and extractor canopy, island unit with oak top/breakfast bar and storage units, stone tiled floor, two radiators.

Utility

With door to side, base level storage units and oak worksurface, tall cupboard, stainless steel sink and drainer, plumbing for washing machine, stone tiled floor, radiator.

Lounge

With wood burner, double glazed window to side, two radiators. Opening to....

Additional Sitting Area

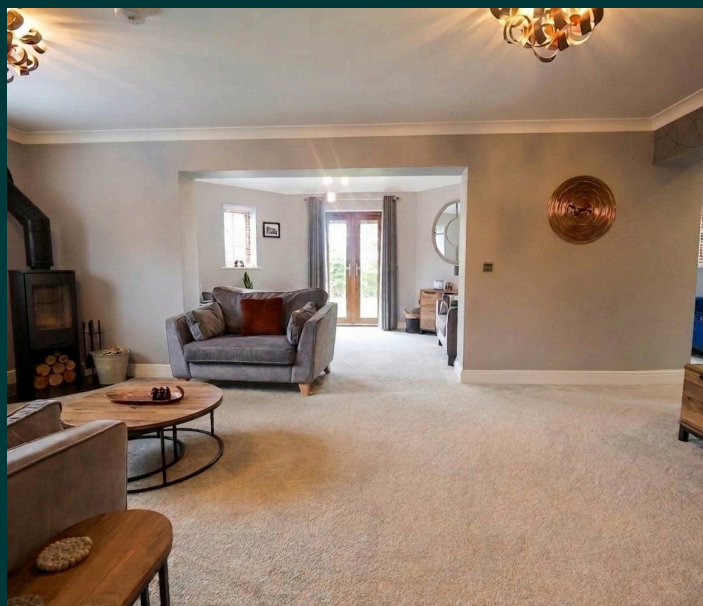
With double glazed windows and French doors into rear garden two radiators.

Snug

With double glazed window and French doors into rear garden, media unit, cupboard, electric panel heater, radiator.

Office/Gym

With double glazed window to side, tiled floor, radiator.



Landing

With access to loft, Velux window, cupboard.

Bedroom 1

With double glazed French doors and Juliet balcony to front, two pairs of double wardrobes, two radiators.

En-suite

With twin basins with countertop and storage units below, built in low level WC, shower cubicle, Velux window, heated towel rail.

Bedroom 2

With four single wardrobes, double glazed windows to front and rear with the rear window offering an attractive view across farmland, two radiators.

En-suite

With vanity unit with wash basin, low level WC, shower cubicle.

Bedroom 3

With Velux window and double glazed window to rear overlooking farmland, built in double wardrobe, radiator.

Bedroom 4

With double glazed window to rear overlooking farmland, built in wardrobe, radiator.

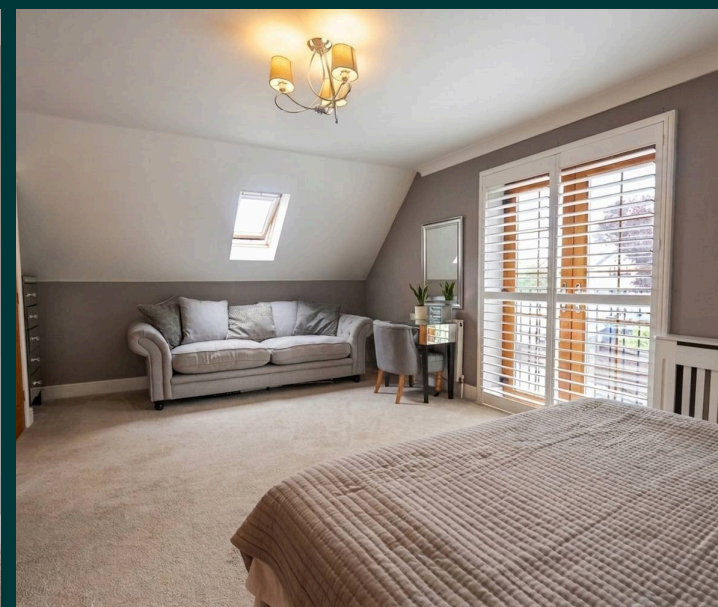
Bathroom

Recently refitted to include a freestanding bath and tap, low level WC, wall mounted two drawer vanity unit, circular basin and tap, Velux window, heated towel rail.

Outside

To the front is an extensive gated driveway which provides ample off street parking. There is a garage which has been reduced in size to create the office/gym but provides excellent storage.

To the rear there is a garden which backs onto a small arable farmyard and offers excellent privacy. The garden is mainly laid to lawn with an extended patio and pergola with attractive climbing roses. There are also well maintained and well stocked borders.

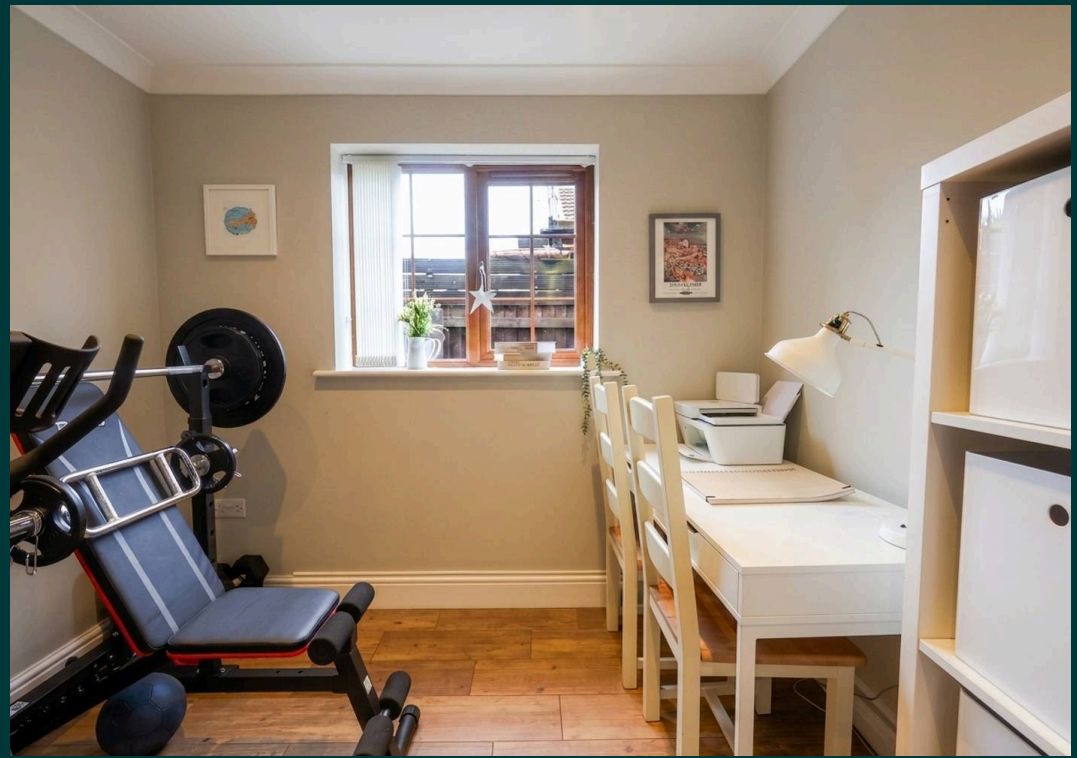










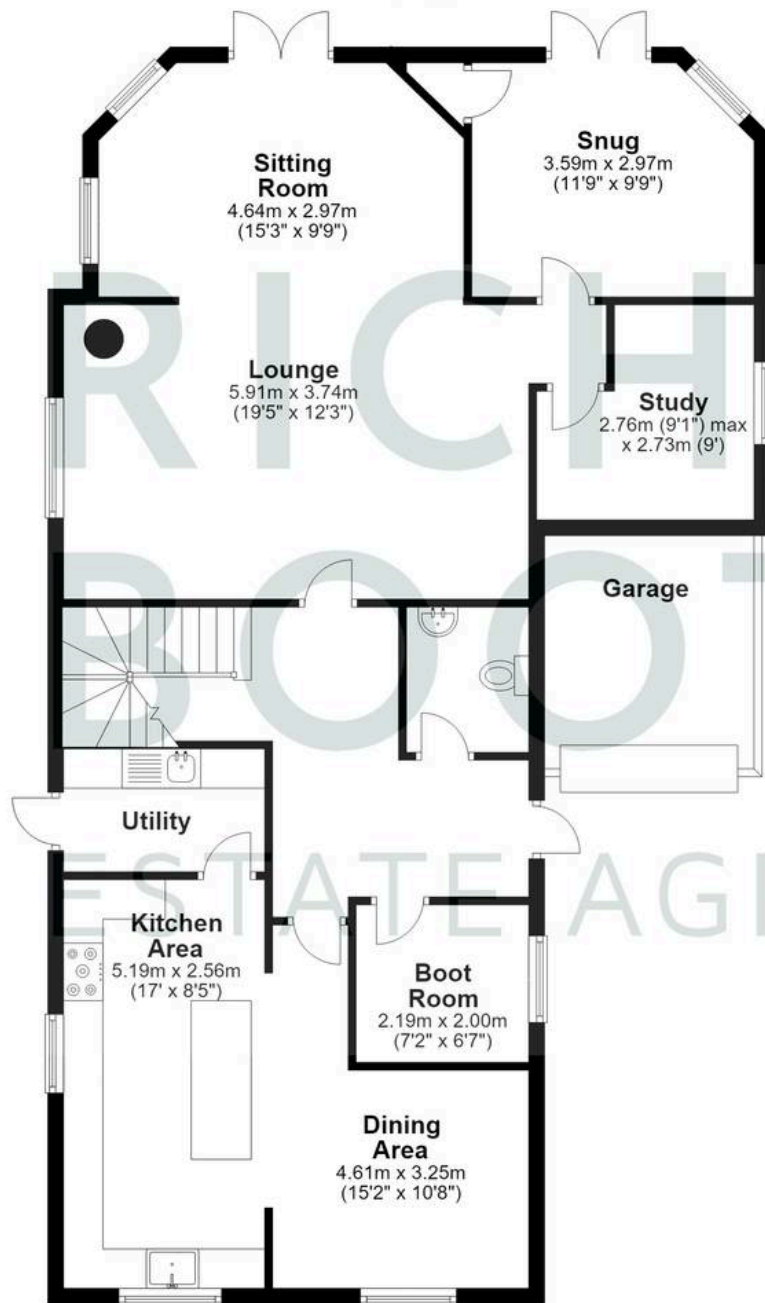






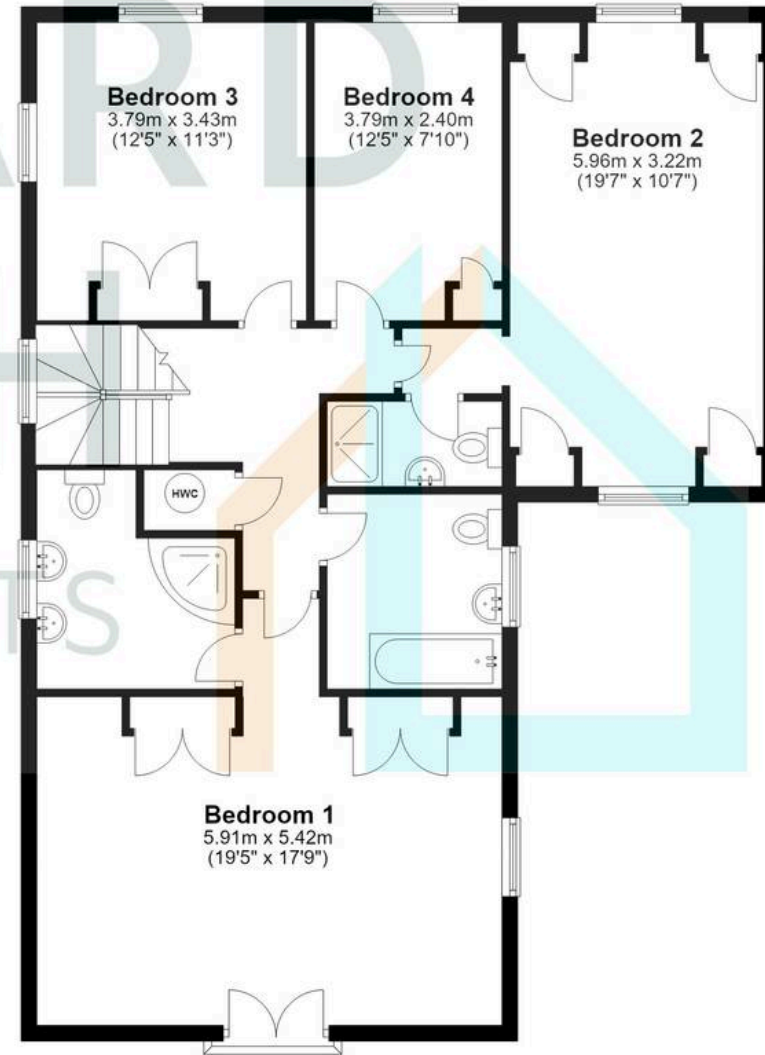
Ground Floor

Approx. 106.2 sq. metres (1142.7 sq. feet)
(excluding Garage)



First Floor

Approx. 95.1 sq. metres (1023.5 sq. feet)
(excluding unnamed room)



Total area: approx. 201.2 sq. metres (2166.2 sq. feet)



Richard Booth Estate Agents

01353 521267

info@richardbooth.org

richardbooth.org

These particulars are for guidance only and do not form part of any contract. Descriptions, measurements, and details are given in good faith but should not be relied upon as fact; buyers must verify accuracy themselves. No employee is authorised to make representations or warranties regarding this property. Measurements are approximate, and floor plans, photos, fixtures, and fittings are illustrative only.

