

FOR SALE

27 Edward Street, Oswestry, SY11 2BN



FOR SALE

Offers in the region of £285,000

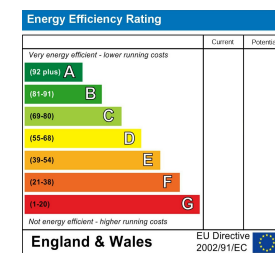
27 Edward Street, Oswestry, SY11 2BN

A handsome four-bedroom semi-detached period home, offering spacious accommodation and character features throughout. Ideally suited to family living, the property enjoys a convenient location together with enclosed gardens.

**Property to sell?** We would be delighted to provide you with a free no obligation market assessment of your existing property. Please contact your local Halls office to make an appointment. **Mortgage/financial advice.** We are able to recommend a completely independent financial advisor,

who is authorised and regulated by the FCA. Details can be provided upon request. **Do you require a surveyor?** We are able to recommend a completely independent chartered surveyor. Details can be provided upon request.

Energy Performance Rating



01691 670320

Oswestry Sales  
20 Church Street, Oswestry, Shropshire, SY11 2SP  
E: oswestry@hallsgb.com



IMPORTANT NOTICE. Halls Holdings Ltd and any joint agents for themselves, and for the Vendor of the property whose Agents they are, give notice that: (i) These particulars are produced in good faith, are set out as a general guide only and do not constitute any part of a contract (ii) No person in the employment of or any agent of or consultant to Halls Holdings has any authority to make or give any representation or warranty whatsoever in relation to this property (iii) Measurements, areas and distances are approximate. Floor plans and photographs are for guidance purposes only (photographs are taken with a wide angled / zoom lenses) and dimensions shapes and precise locations may differ (iv) It must not be assumed that the property has all the required planning or building regulation consents. Halls Holdings, Bowmen Way, Shrewsbury, Shropshire SY4 3DR. Registered in England 06597073.



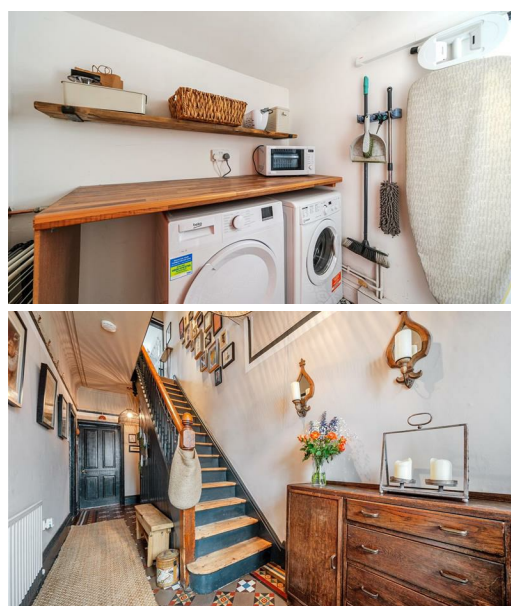
2 Reception Room/s



4 Bedroom/s



1 Bath/Shower Room/s



- **Period four-bedroom home**
- **Convenient town-centre location**
- **Generous accommodation over two floors**
- **Character features and excellent potential**
- **Ideal family home, first purchase or investment**
- **Easy access to the A5 and regional transport links**

**DESCRIPTION**

A well-proportioned four-bedroom period semi-detached home occupying a convenient position close to the centre of the popular market town of Oswestry. Offering generous accommodation arranged over two floors, the property combines character features with practical family living and benefits from an enclosed rear garden, utility room and detached garage. The accommodation will appeal to a range of buyers including families, professional couples, first-time purchasers and investors seeking a character home within easy reach of local amenities.

**LOCATION**

The property occupies a sought-after residential position on Edward Street, within comfortable walking distance of Oswestry town centre. The town offers a comprehensive range of facilities including supermarkets, independent retailers, cafés, restaurants, schools, healthcare services and leisure amenities. Excellent road connections are available via the A5, providing access towards Shrewsbury, Chester and the wider motorway network.

**DIRECTIONS**

From Oswestry town centre proceed towards Edward Street where the property will be found on the left-hand side as identified by the agent's For Sale board.

**ACCOMODATION**

The accommodation briefly comprises:

**Reception Hall**

A welcoming entrance hall with staircase rising to the first floor and access to the principal ground floor accommodation.

**Living Room / Reception Room**

A generously proportioned bay-fronted reception room providing an excellent space for everyday family living and entertaining.

**Dining Room**

A separate dining room offering flexibility for formal dining, family meals or additional reception space.

**Kitchen**

Fitted with a range of wall and base units with work surfaces, incorporating sink unit, hob and oven, and providing access to the adjoining utility room.

**Utility Room**

A useful ancillary space with additional worktop/storage provision and space/plumbing for laundry appliances.

**First Floor Landing**

Giving access to all first floor accommodation.

**Bedrooms**

Three bedrooms, comprising three comfortable double rooms whilst the fourth bedroom is ideal as a child's room, nursery or home office.

**Bathroom**

Family bathroom fitted with a suite comprising bath, wash hand basin and WC.

**OUTSIDE**

To the rear the property enjoys an enclosed garden, providing a pleasant space for relaxation and outdoor entertaining, with lawn and established planting. A detached garage is also included.

**SERVICES**

Mains water, electricity, drainage and gas are understood to be connected, subject to confirmation.

**POSSESSION AND TENURE**

The property is offered as freehold with vacant possession upon completion.

**LOCAL COUNCIL**

Shropshire Council.

**COUNCIL TAX BAND**

Council Tax Band: C

**VIEWINGS**

Strictly by appointment through the selling agents.

**ANTI-MONEY LAUNDERING (AML) CHECKS**

We are legally obligated to undertake anti-money laundering checks on all property purchasers. Whilst we are responsible for ensuring that these checks, and any ongoing monitoring, are conducted properly; the initial checks will be handled on our behalf by a specialist company, Movebutler, who will reach out to you once your offer has been accepted. The charge for these checks is £30 (including VAT) per purchaser, which covers the necessary data collection and any manual checks or monitoring that may be required. This cost must be paid in advance, directly to Movebutler, before a memorandum of sale can be issued, and is non-refundable. We thank you for your cooperation.