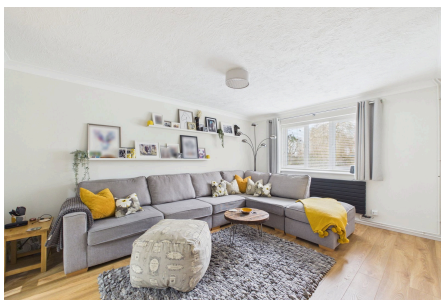


Robinsons Close, Mellis, Eye, IP23 8DJ

Offers Over £240,000

3 1 2



Significantly enhanced and upgraded, this beautifully presented house occupies a sought after position, set back from the green and boasting a stunning outlook

Key Features

- No onward chain
- Stunning views over Mellis Green
- Extended and significantly enhanced
- Landscaped gardens with large garden house/ home office
- Immaculacy and beautifully presented throughout
- Over 836 sqft
- Off road parking
- Council Tax B
- Freehold
- EPC - D

