

Symonds
& Sampson



Langmoor Farm

Hawkchurch, Axminster, Devon

Langmoor Farm

Hawkchurch
Axminster
Devon EX13 5UD

A charming and picturesque Grade II Listed renovated farmhouse enjoying a private and secluded setting with approximately 20 acres incorporating a variety of outbuildings and a separate work from home office.



- A three bedroom detached Grade II Listed farmhouse
 - Set at the end of a gated private driveway
- Providing privacy and seclusion set well away from passing traffic
- Wealth of period features with inglenook fireplaces and exposed beams
 - Variety of modern outbuildings and purpose-built office set up
- Approximately 20 acres in total to include paddocks and a wooden copse
- Sympathetically renovated with hardwood windows and oak internal doors
 - Oil fired central heating system
- Haven for natural wildlife and escapism, ideal for any lifestyle adventure

Guide Price **£1,350,000**

Freehold

Axminster Sales
01297 33122

axminster@symondsandsampson.co.uk



THE PROPERTY

Langmoor Farm comprises a Grade II Listed detached farmhouse being of architectural and historic merit built principally of a stone construction with colour washed elevations under slate roof. The current vendor has enjoyed nearly 20 years of ownership during which time he has undertaken a program of works to improve and renovate this character rich Devon gem. There is a blend of period features such as inglenook fireplaces and exposed beams alongside modern day conveniences of an oil fired central heating system with partial ornate column radiators and double glazed hardwood windows.

ACCOMMODATION

The moment you enter Langmoor Farm you are greeted by a flagstone and natural wood flooring complemented by a turned oak staircase and bespoke oak kitchen incorporating Belfast sinks and an oil fired Rayburn. A particular internal feature is the impressive living room with vaulted ceiling enhanced by French patio doors and heavy exposed timbers. The majority of openings enjoy a view over the established private grounds. Other benefits include a useful utility area with an adjoining wet room also complimented by a variety of stable doors.

The true delight of this package has to be in its site and situ sitting in almost its own valley accessed via gated private driveway leading to established grounds extending in total to approximately 20 acres incorporating various fenced paddocks some of which include stylish chestnut fencing. There is a pleasant division between the manicured farmhouse and the agricultural element with the farmyard set a good distance away from the formal grounds.





Within the concrete yard are a pair of timber frame outbuildings providing numerous bays with potential for stabling. There are also lockable roller door garages/store rooms. A particular feature is the almost self-contained element of a home office building where there is a ground floor and first floor providing a woodburning stove and shower room facility suitable for a variety of uses subject of course to any necessary consents.

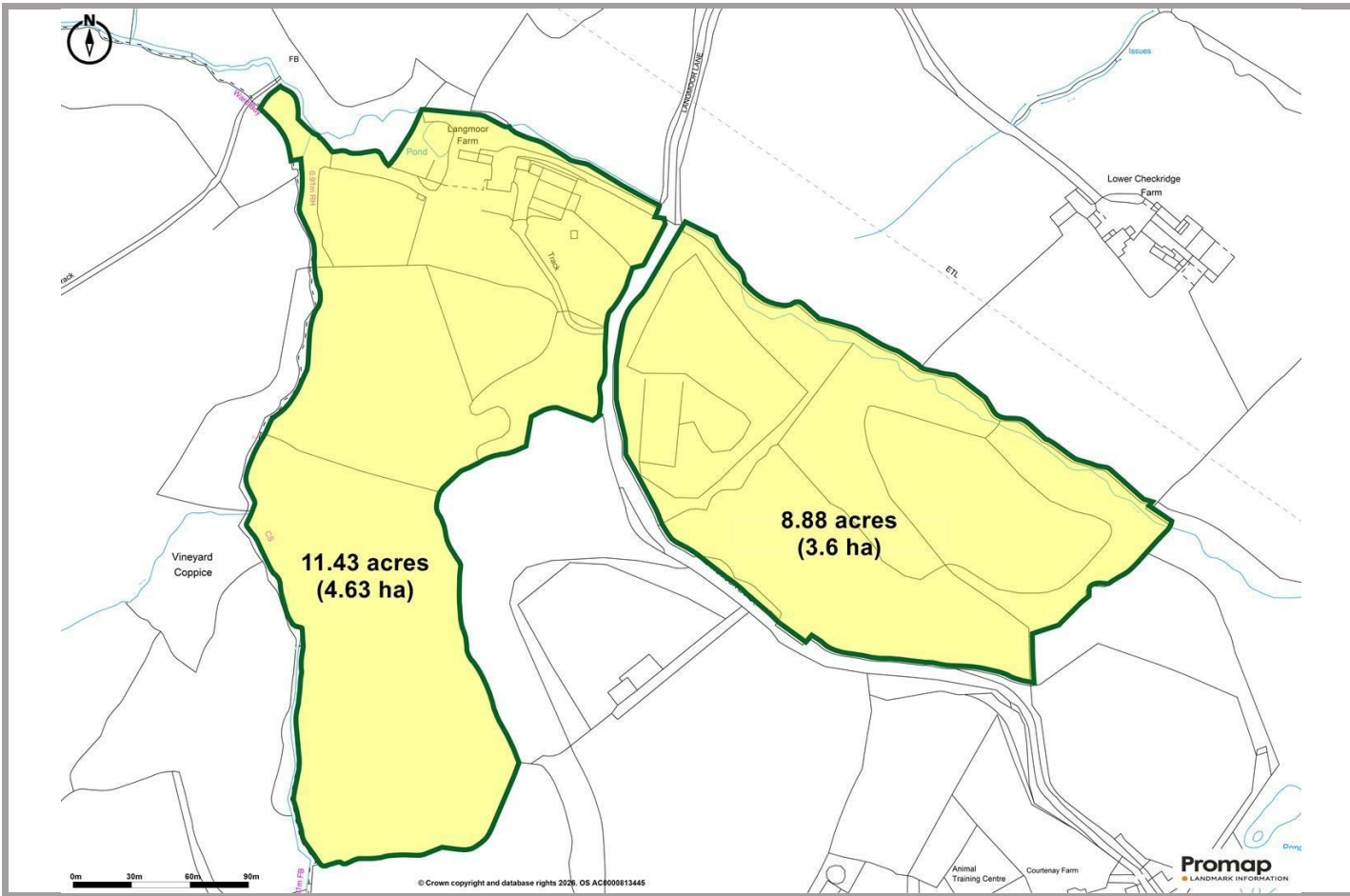
Once you arrive at the end of a no through road, you are greeted by a ranch style gate, As you approach the farm from the gravel driveway the tranquil setting becomes

apparent. It is a place of adventure for a lifestyle enthusiast or a small holding dream of breeding sheep or equine pursuits.

SITUATION

Hawkchurch has an active community with many societies, primary school, pub inn, holiday resort and spa, 12th century church and recently expanded community shop. The Jurassic Coast World Heritage site and famed resort of Lyme Regis are about 6 miles away. This popular resort with its famous Cobb and sand beach, provides a range of independent shops and restaurants. The market town of

Axminster (4 miles) offers all the facilities one would expect from a small market town including supermarkets, doctor's surgery and recreational facilities including a sports centre and swimming pool. A main line station providing access to London Waterloo and the home of River Cottage HQ situated in the nearby Trinity Hill area. Despite its tranquil setting this property is well placed with excellent transport connections both east and west with the A30/A303 and the A35 coast roads. The Cathedral city of Exeter is easily accessible with its excellent shopping facilities, theatres, national league sports clubs, international airport and access to the M5.



DIRECTIONS

What3Words
[///payout.tastier.coder](https://www.what3words.com/payout.tastier.coder)

LOCAL AUTHORITY

East Devon District Council
 Tel : 01404 515616
 Council Tax Band F.

SERVICES

Standard broadband and mobile network coverage are available in the area. Refer to Ofcom's website.
 Private borehole water.
 Private drainage- sewage treatment plant

Hawkchurch, Axminster

Approximate Area = 1481 sq ft / 137.5 sq m (excludes open barn)

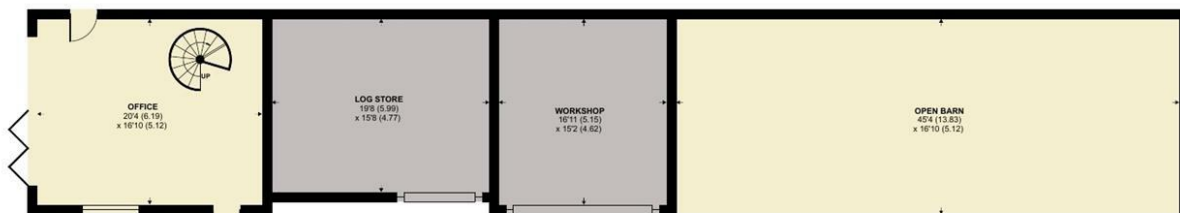
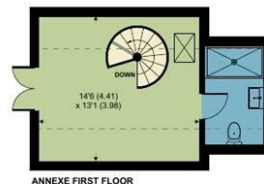
Limited Use Area(s) = 80 sq ft / 7.4 sq m

Annexe = 502 sq ft / 46.6 sq m

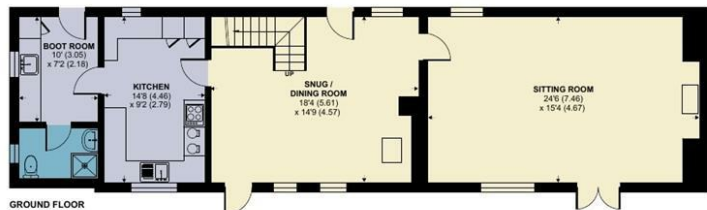
Outbuildings = 563 sq ft / 52.3 sq m

Total = 2626 sq ft / 243.8 sq m

For identification only - Not to scale



ANNEXE GROUND FLOOR / OUTBUILDING 1 / 2



GROUND FLOOR



FIRST FLOOR



Floor plan produced in accordance with RICS Property Measurement 2nd Edition, Incorporating International Property Measurement Standards (IPMS2 Residential). © ncthecom 2025. Produced for Symonds & Sampson. REF: 1360279



Axm/JP/30.6.26



01297 33122

axminster@symondsandsampson.co.uk
Symonds & Sampson LLP
, Trinity Square,
Axminster, Devon EX13 5AW



Important Notice: Symonds & Sampson LLP and their clients give notice that they have no authority to make or give any representations or warranties regarding the property. These particulars do not form part of any offer or contract and must not be relied upon as statements of fact. Some descriptions and images may have been AI-assisted; while reviewed for accuracy, interested parties should verify key details through inspection or by contacting our agents. All measurements and distances are approximate. Text, photographs, and plans are for guidance only and may not be comprehensive. It should not be assumed that the property has all necessary planning or regulatory consents, and no services, equipment, or facilities have been tested. No investigations have been made into pollution or contamination; purchasers must make their own enquiries. The property is sold subject to all existing wayleaves, easements, and rights of way (public or private), whether mentioned or not. Vendors are not required to define such rights.