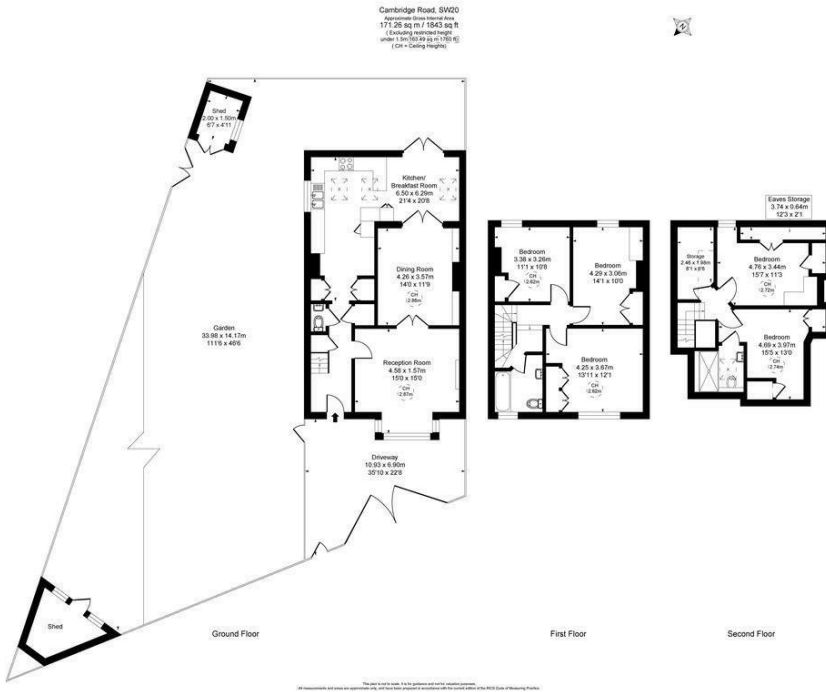


**Cambridge Road
West Wimbledon, SW20 0SQ**

OFF MARKET EXCLUSIVE £2,100,000 Freehold



This truly exceptional and characterful five-bedroom, two-bathroom Victorian end-of-terrace home occupies a substantial corner plot on the junction of Lambton Road and Cambridge Road. Ideally located for Hollymount Primary School, Raynes Park High Street and Station, and the open green spaces of Holland Gardens, Cottenham Park and Wimbledon Common, the property also benefits from off-street parking to the front.



- Exceptional Five-Bedroom Victorian End-Of-Terrace Family Home
- Occupying A Substantial Corner Plot On Lambton Road And Cambridge Road
- Two Bathrooms, Including En Suite To Top Floor Bedroom
- Substantial Garden With Two Decked Entertaining Areas
- Ideally located For Hollymount Primary School
- Close To Holland Gardens, Cottenham Park And Wimbledon Common
- Off-Street Parking To The Front
- Beautifully Presented Throughout With Abundance Of Period Character
- EPC - TBC
- Council Tax Band - G

Energy Efficiency Rating		
	Current	Potential
Very energy efficient - lower running costs		
(92 plus) A		
(81-91) B		
(69-80) C		
(55-68) D		
(39-54) E		
(21-38) F		
(1-20) G		
Not energy efficient - higher running costs		
England & Wales	EU Directive 2002/91/EC	

For Free Mortgage Quote and Best Mortgage Rates, call Ellisons Mortgage Advisor on 0208 944 9595



Although these particulars are believed to be correct, their accuracy is not guaranteed and they do not form part of any contract.

Celebrating 30 years of successful Sales and Lettings in Merton

