

**Location:**

This beautiful development is ideally positioned on Chiswick High Road, moments away from Chiswick Park and Gunnersbury Stations.

**Key points:**

- One bedroom apartment
- Modern development
- Open plan living
- 469 sq.ft / 43.6 sq.m
- Underfloor heating
- Off-street parking space
- No onward chain

# Do Better:

**Acton**  
sales@astonrowe.co.uk

57-59 Churchfield Road,  
Acton, London, W3 6AY

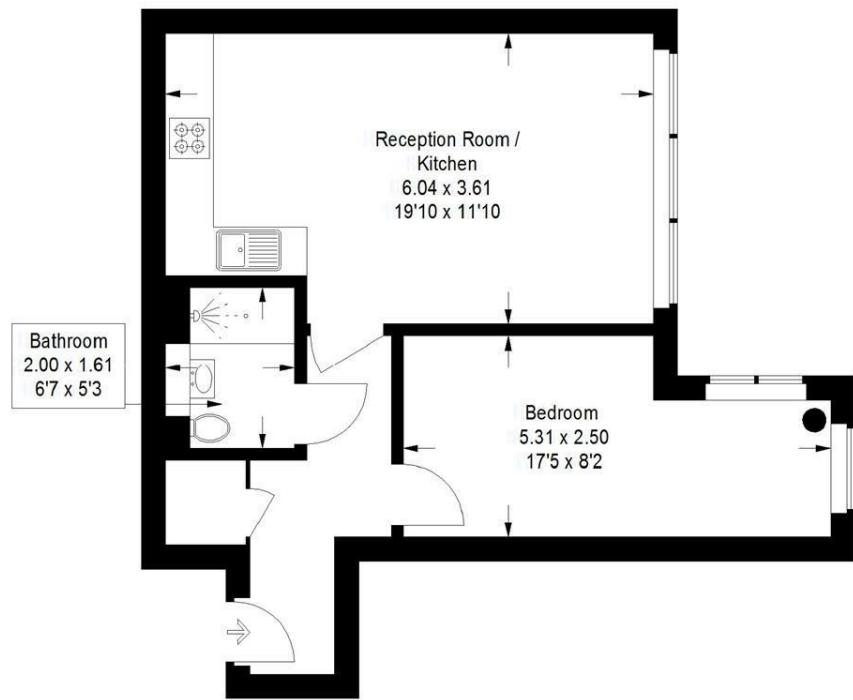
020 8992 3600

# Aston Rowe



**Chiswick High Road**

Approximate Gross Internal Area  
43.6 sq m / 469 sq ft



**Second Floor**  
43.6 sq m / 469 sq ft

Illustration for identification purposes only, measurements are approximate, not to scale. floorplansUsketch.com © (ID685854)

**Offers Over £400,000**

**Chiswick High Road, London W4  
5RL**

Energy Efficiency Rating		Environmental Impact (CO <sub>2</sub> ) Rating	
Current	Potential	Current	Potential
64	64		

England & Wales EU Directive 2002/91/EC

- 1 Reception Rooms
- 1 Bedrooms
- 1 Bathrooms

The current owner says:

**The apartment benefits from a secure, allocated off-street parking space. A rare find in Chiswick.**

A modern one bedroom apartment set in a highly desirable development on Chiswick High Road with a secure gated parking space.

Set on the 2nd floor (with lift) of this new development just a 4 minute walk from Chiswick Park tube (Piccadilly & District lines) and Gunnersbury Station and moments from the fantastic bars, restaurants, shops and amenities of Chiswick High Road.

The property comprises a large double bedroom with built-in-storage, shower suite, large storage area and a beautifully bright and spacious open plan kitchen/reception room with high end appliances.

Further benefits include intercom entry system, electric blinds, solid wood flooring, under floor heating, double glazing, and a cycle store.



**What's better:**

**A stunning one bedroom new build apartment in Chiswick**

