



Dacres Close, Cheshunt

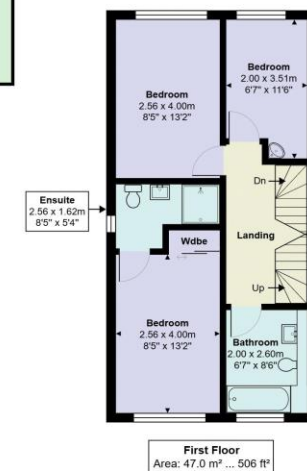
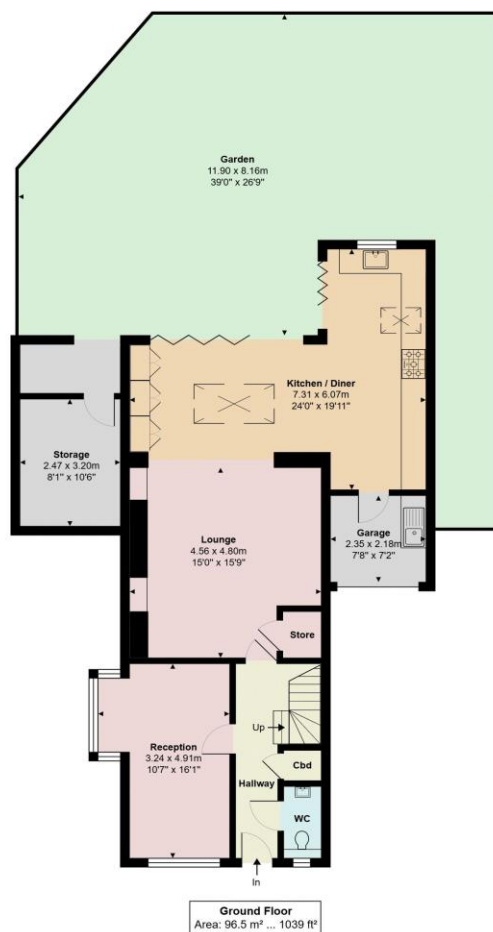


- FIVE BEDROOMS
- DETACHED
- STUNNING KITCHEN / DINER
- MASTER BEDROOM SUITE AND WALK-IN WARDROBES
- TWO EN SUITES
- OFF STREET PARKING
- GARDEN IDEAL FOR ENTERTAINING

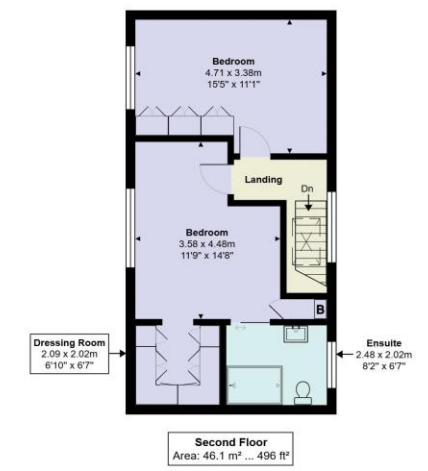
**Dacres Close**  
Cheshunt EN7 6EJ

This stunning five-bedroom detached family home has been beautifully extended and reconfigured to create a luxurious, spacious and impeccably presented residence. Finished with high-specification fittings throughout, the property offers an exceptional standard of modern living. The heart of the home is the superb open-plan kitchen and breakfast area, designed for both everyday family life and entertaining. This flows effortlessly into the bright living spaces, including a generous living room, a versatile office/playroom, and a ground-floor cloakroom. Upstairs, the impressive master bedroom suite features a walk-in wardrobe and a stylish en-suite. The second bedroom also benefits from its own en-suite, with three further well-proportioned bedrooms completing the first floor. Outside, the landscaped rear garden is a true highlight, offering a designated barbecue and bar area, perfect for summer gatherings, along with an additional storage room. The property also provides off-street parking.

Ideally located close to local amenities, the home is within easy reach of Brookfield Retail Park—home to Marks & Spencer, Next and a range of major retailers. Both Cuffley and Cheshunt train stations are a short drive away, offering fast links into London. The property is also well-positioned for Goffs Academy and several excellent primary schools.



Energy Efficiency Rating		Current	Potential
Very energy efficient - lower running costs			
(92-100)	<b>A</b>		94
(81-91)	<b>B</b>	83	
(69-80)	<b>C</b>		
(55-68)	<b>D</b>		
(39-54)	<b>E</b>		
(21-38)	<b>F</b>		
(1-20)	<b>G</b>		
Not energy efficient - higher running costs			
England, Scotland & Wales		EU Directive 2002/91/EC	



**Dacres Close, Cheshunt, EN7 6EJ**  
Total Area: 189.6 m<sup>2</sup> ... 2041 ft<sup>2</sup> (excluding garden)  
All measurements are approximate and for display purposes only