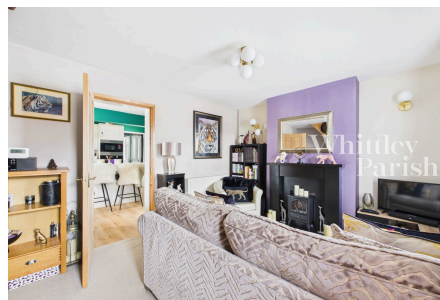


## Shelfanger Road, Diss IP22 4DX

Guide Price £210,000 - £220,000

2 1 2



Well positioned within walking distance of Diss town centre, this attractive Victorian semi-detached home offers well-presented accommodation including an open-plan kitchen/diner with central island, a bright front living room, two well-proportioned bedrooms, and a family bathroom. The property also benefits from a low-maintenance courtyard garden, off-road parking, and is conveniently located for a wide range of local amenities and mainline rail links to London Liverpool Street and Norwich.

## Key Features

- Guide Price £210,000 - £220,000
- Off-road parking
- Characterful Victorian semi-detached property
- Spacious open plan kitchen/dining room
- Modern family bathroom
- Two good sized bedrooms
- Private, easy to maintain garden
- Close to town centre

