



rear exterior

Wildwood Road, Hampstead Garden Suburb, NW11

Freehold

Guide Price £2,000,000



800 Finchley Road, Hampstead Garden Suburb, London, NW11 7TJ

020 8458 5000

sales@litchfields.com

www.litchfields.com

Offices also in Highgate



Located in perhaps the areas finest location between the Heath Extension and Turners Wood. Approached via a long driveway sits a secluded and rarely available character house which now offers fantastic potential to create a wonderful home in the most beautiful leafy and green country like surroundings. The spacious main reception features a lovely bay opening directly onto the stunning 124' rear garden which directly backs onto Turners Wood. The house enjoys close proximity to Golders Green Underground and the wide open expanses of the Heath Extension. Unique homes of this size in this section of Wildwood Road never come to market. Early viewing is strongly advised.



6

2

4

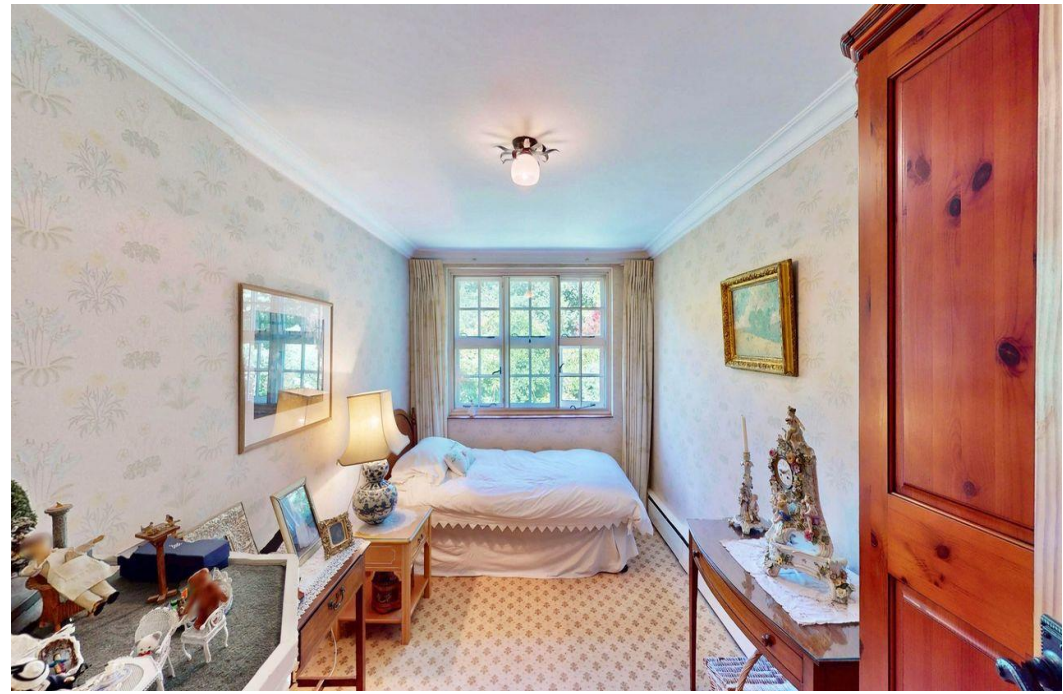
D



- Six Bedrooms
- Two bathrooms (1 en suite)
- Entrance Hall/Reception
- Drawing Room
- Dining Room
- Kitchen
- Breakfast Room
- Cloakroom
- Basement
- Stunning and large rear garden
- Backs onto Turners Wood
- Garage
- EPC= D

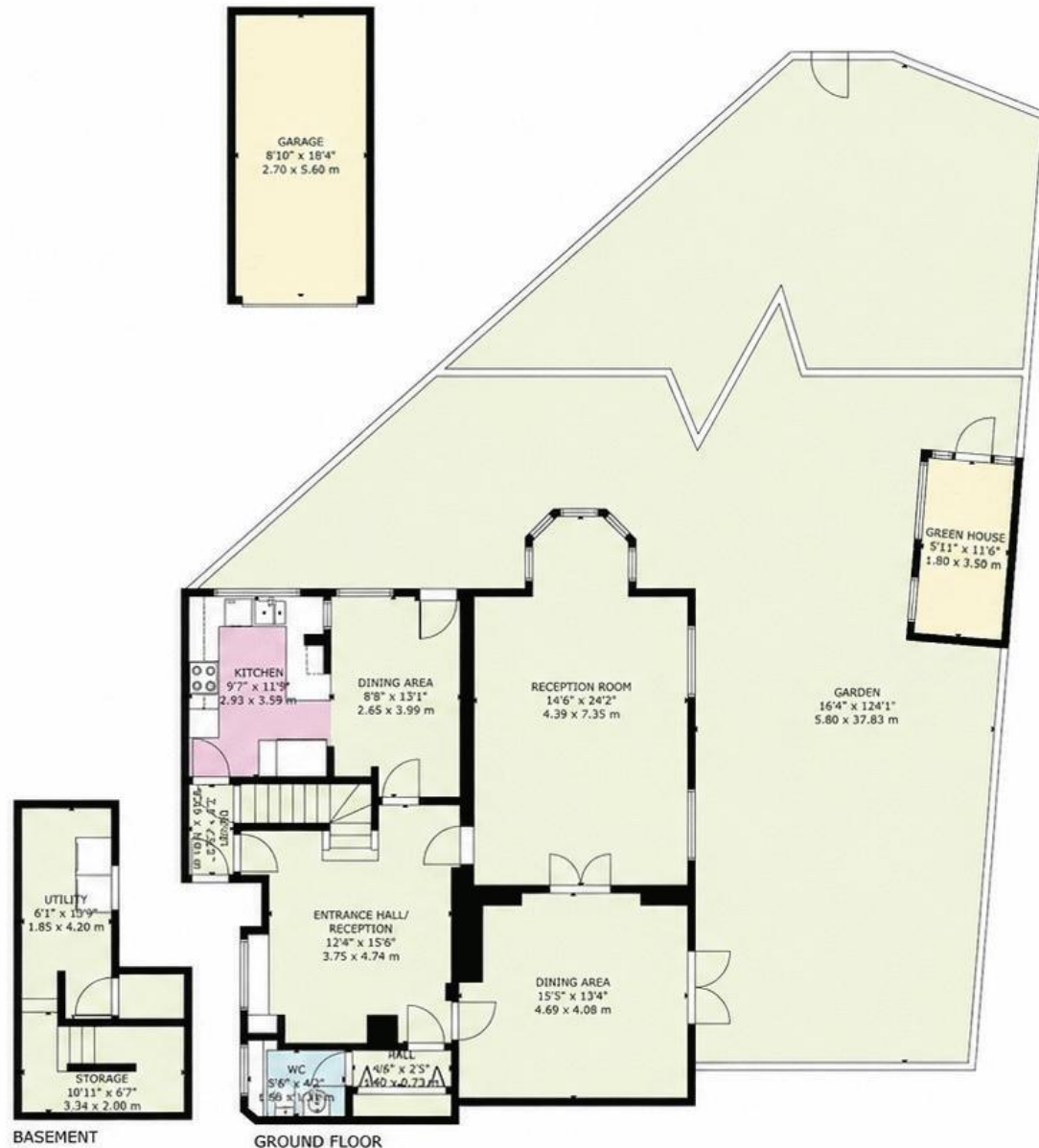
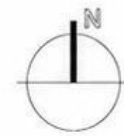












GROSS INTERNAL AREA
 TOTAL: 233 m²/2,510 sq ft
 BASEMENT: 15 m²/164 sq ft, GROUND FLOOR: 101 m²/1,084 sq ft
 FIRST FLOOR: 97 m²/1,042 sq ft, SECOND FLOOR: 20 m²/220 sq ft
 EXCLUDED AREAS: GARDEN: 300 m²/3,229 sq ft, GARAGE: 15 m²/163 sq ft, GREEN HOUSE: 6 m²/68 sq ft
 SIZE AND DIMENSIONS ARE APPROXIMATE, ACTUAL MAY VARY