



Palmer & Partners



Chedworth Place, Tattingstone, Suffolk, IP9 2ND Asking Price: £335,000

Chedworth Place, Tattingstone, Ipswich, Suffolk, IP9 2ND

Sitting in grounds of approximately 7.5 acres of private gardens and woodland on the desirable gated Chedworth Place development in Tattingstone, lies this magnificent three bedroom townhouse. This beautifully presented family home offers wonderful views across the communal gardens from the front and comes with two allocated parking spaces together with visitors parking, and a pretty walled courtyard style rear garden. As agents, we recommend the earliest possible viewing to fully appreciate the setting together with size and quality of the accommodation on offer which comprises entrance hall; 18ft dual aspect open plan kitchen / living / dining room with integrated appliances; first floor landing; two of the double bedrooms; family bathroom; and on the top floor is the master suite consisting of generous dual aspect double bedroom with en-suite shower room.

Agents note:

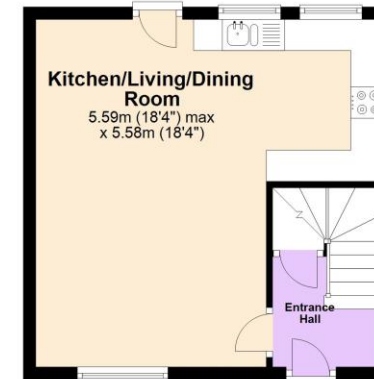
There is an annual maintenance charge of approximately £800

The pretty village of Tattingstone on the Shotley peninsula is situated approximately 5 miles south of Ipswich which offers direct rail links into London Liverpool Street station. Village amenities include an excellent primary school, two public houses, and farm shop with Alton Water being within very close proximity offering beautiful walks, cycle routes and rowing and sailing facilities.

Council tax band: D

EPC Rating: TBC

Ground Floor
Approx. 20.6 sq. metres (222.2 sq. feet)



First Floor
Approx. 31.3 sq. metres (336.8 sq. feet)



Second Floor
Approx. 24.7 sq. metres (266.2 sq. feet)



Total area: approx. 76.7 sq. metres (825.3 sq. feet)

Although every attempt has been made to ensure the accuracy of this floorplan measurements of doors, windows, rooms and any other items are approximate and no responsibility is taken for any error, omission or mis-statement. This plan is for illustrative purposes only.
Plan produced using PlanUp.



