



Tressillian Road, SE4 | £4,250 Per Month

02077819888

brockley@pedderproperty.com

pedder
We live local



In General

- Stunning Victorian house
- Four double bedrooms
- Two modern bathrooms
- Beautiful south east facing private rear garden
- Excellent finish throughout
- Open plan kitchen/ dining room with separate utility room
- Large separate reception room with bay window
- Separate office space
- Close to excellent transport links and local amenities
- Available early August

In Detail

A beautifully renovated four bedroom Victorian home on the desirable Tressillian Road, in the heart of the conservation area.

Meticulously redesigned by award winning architects, it blends period charm with modern touches, and a stunning tropical garden.

A characterful living room with original Victorian ceiling details and large sash windows with plantation shutters. A dedicated office space sits adjacent-perfect for remote work with built-in wardrobes and open shelving. Concealed behind panelled doors is a utility room, new boiler and tall cupboards. A stylish toilet with terrazzo flooring and a cellar offers extra storage.

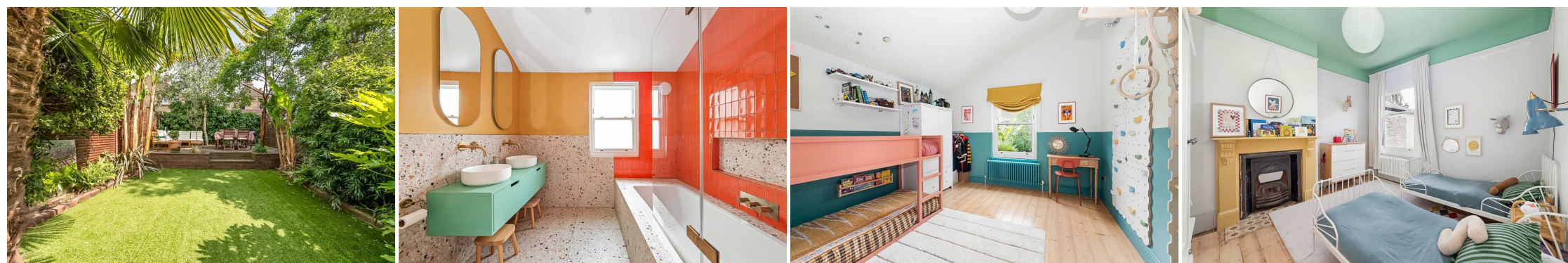
At the rear, a spectacular kitchen and dining area with underfloor heating, terrazzo island, boiling water tap, and premium appliances (Bosch, Siemens, Miele). Sliding doors open to a lush, three tiered tropical garden - your own leafy retreat.

Upstairs are three double bedrooms with high ceilings and fitted wardrobes. The family bathroom features terrazzo flooring, double sinks, and elegant finishes. The top floor offers another bedroom with en-suite, juliet balcony, eaves storage - plus a cozy skylit reading nook.

You're just a short walk to Brockley, Crofton Park, and St Johns stations. Brockley, Crofton Park, Honor Oak and Ladywell town centres are nearby, with spots like Ellary's, L'Oculto, Joyce, Brickfields, Mamma Dough, The Ladywell Tavern, and Oscar's. You can also enjoy Hilly Fields Park, Ladywell Fields with the Ravensbourne River, Telegraph Hill Park, Brockley & Ladywell Cemetery, and nearby Greenwich Park and Blackheath.

Popular schools are also in the area (Beecroft Garden, John Stainer, Gordonbrock, and Prendergast) with private schools nearby too.

EPC: E | Council Tax Band: E | Part Furnished | Available end July/ early August | HD: £980.76 | SD: £4,903.84



Floorplan

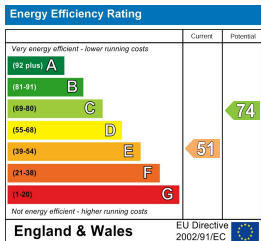
Tressillian Road SE4

Approximate Gross Internal Area
134.7 sq m / 1449 sq ft



Copyright www.pedderproperty.com © 2025

These plans are for representation purposes only as defined by RICS - Code of Measuring Practice. Not drawn to Scale. Windows and door openings are approximate. Please check all dimensions, shapes and compass bearings before making any decisions reliant upon them.



Pedder Property Ltd trading as Pedder for themselves and for the vendor/landlord of this property whose agents they are, give notice that (1) these particulars do not constitute any part of an offer or contract, (2) all statements contained within these particulars are made without responsibility on the part of Pedder or the vendor/landlord, (3) whilst made in good faith, none of the statements contained within these particulars are to be relied upon as a statement of representation or fact, (4) any intending purchaser/tenant must satisfy him/herself by inspection or otherwise as to the correctness of each of the statements contained within these particulars, (5) the vendor/landlord does not make or give either Pedder or any person in their employment any authority to make or give representation or warranty whatsoever in relation to this property.