



andrew nunn
ASSOCIATES

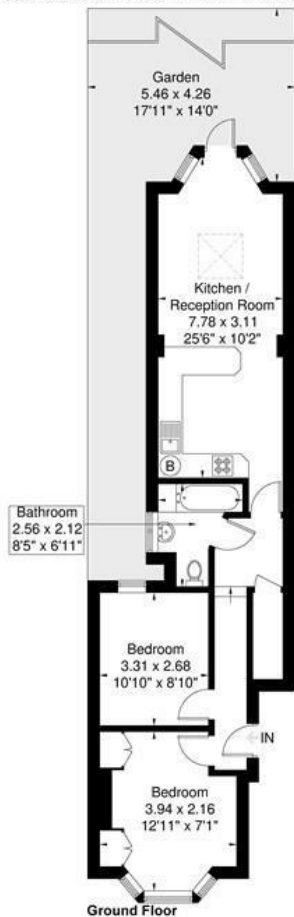
PER MONTH

£2,300 Per Month

Kingswood Road

London, W4 5ET

Kingswood Road
 Approximate Gross Internal Area = 59.9 sq m / 644 sq ft



Although every attempt has been made to ensure accuracy, all measurements are approximate. The floorplan is for illustrative purposes only and not to scale.
 © www.perspective.co.uk



Energy Efficiency Rating		Current	Potential
Very energy efficient - lower running costs			
(92 plus)	A		
(81-91)	B		
(69-80)	C		
(55-68)	D		
(39-54)	E		
(21-38)	F		
(1-20)	G		
Not energy efficient - higher running costs			
England & Wales			
		EU Directive 2002/91/EC	

Agents Note: Whilst every care has been taken to prepare these particulars, they are for guidance purposes only. All measurements are approximate and are for general guidance purposes only and whilst every care has been taken to ensure their accuracy, they should not be relied upon and potential buyers/tenants are advised to recheck the measurements



OFFICE ADDRESS
 The Clock House
 66 South Parade
 Chiswick
 London

OFFICE DETAILS
 020 8995 1600
 lettings@andrewnunnassociates.co.uk
 andrewnunnassociates.co.uk