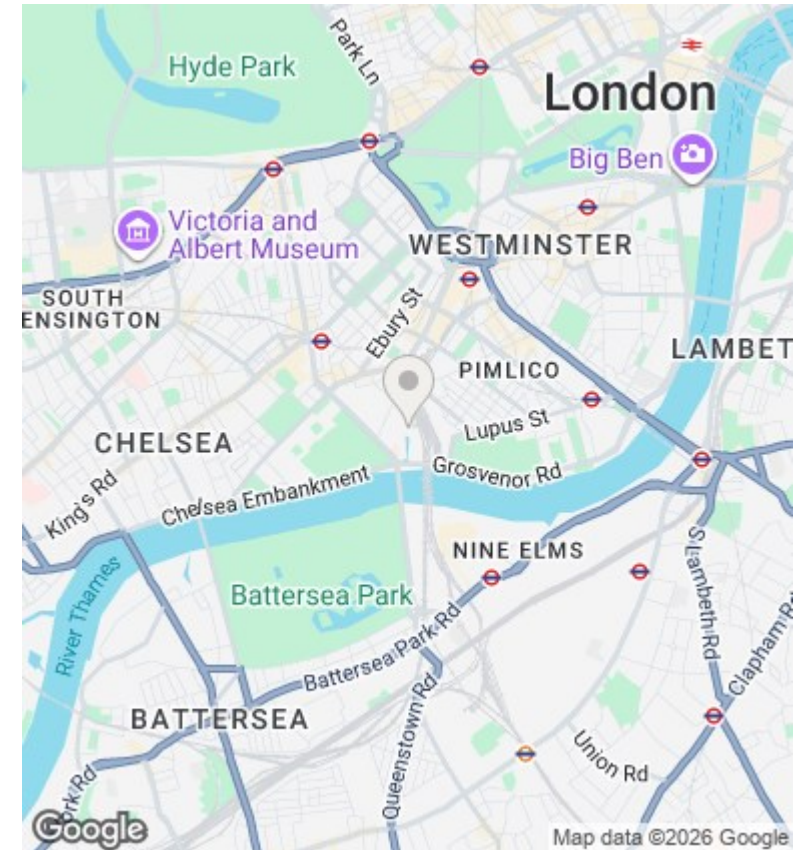
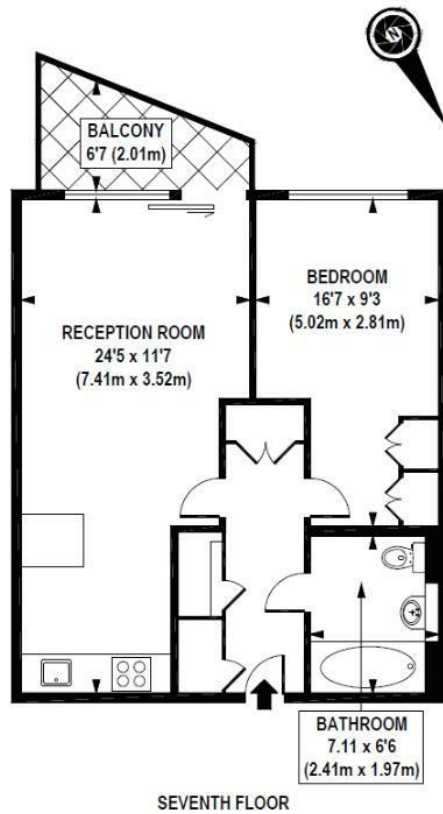




Caro Point , Grosvenor Waterside , Gatliff Road SW1W 8BD

£3,142 Per Month

- 24 HOUR CONCIERGE
- GYM AND SPA
- WALKING DISTANCE TO SLOANE SQUARE AND VICTORIA TUBE STATIONS
- VIDEO VIEWING AVAILABLE
- RIVERSIDE DEVELOPMENT
- ON SITE FOOD SHOP AND RESTAURANT / COFFEE SHOP
- UNDERFLOOR HEATING
- MOMENTS AWAY FROM BATTERSEA PARK



Viewings

Viewings by arrangement only.
Call 02077225022 to make an appointment.

Council Tax Band

C

EPC Rating:

Energy Efficiency Rating		
	Current	Potential
<i>Very energy efficient - lower running costs</i>		
(92 plus) A		
(81-91) B		
(69-80) C		
(55-68) D		
(39-54) E		
(21-38) F		
(1-20) G		
<i>Not energy efficient - higher running costs</i>		
England & Wales	EU Directive 2002/91/EC	