

Symonds
& Sampson

Symonds
& Sampson

ESTABLISHED 1858

www.symondsandsampson.co.uk

SALES
& LETTINGS

SALES
& LETTINGS

38

Hogshill Street, Beaminster, Dorset,

38

Hogshill Street
Beaminster
Dorset
DT8 3AA



- Unfurnished
- Long term let
- Available early June
- Spacious maisonette with character features
 - Central to Beaminster town
 - Ground Floor Store Room



£850 Per Calendar Month

Beaminster Lettings
01308 863100
beaminster@symondsandsampson.co.uk

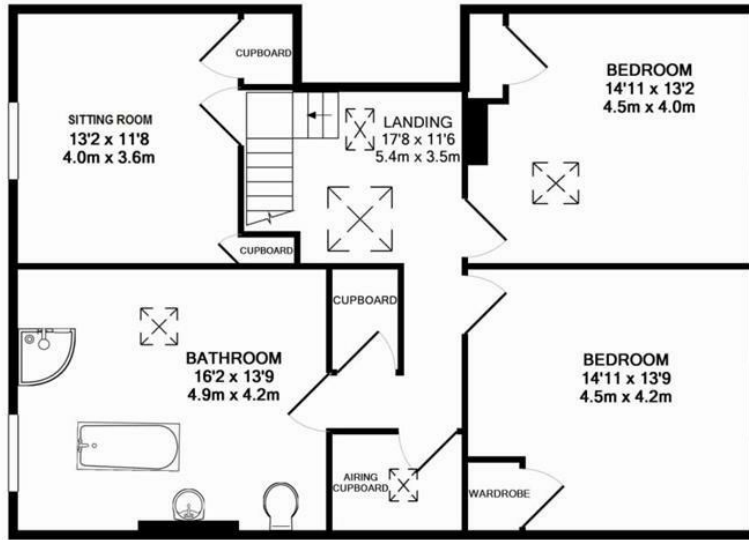


Energy Efficiency Rating	
Energy Efficiency Class	Current
Very energy efficient (lowest carbon value)	
A	
B	
C	
D	
E	
F	
G	
Very energy inefficient (highest carbon value)	
England & Wales	
EU Directive 2002/91/EC	



GROUND FLOOR
APPROX. FLOOR
AREA 46 SQ.FT.
(4.3 SQ.M.)

1ST FLOOR
APPROX. FLOOR
AREA 236 SQ.FT.
(22.0 SQ.M.)



2ND FLOOR
APPROX. FLOOR
AREA 984 SQ.FT.
(91.4 SQ.M.)

TOTAL APPROX. FLOOR AREA 1266 SQ.FT. (117.7 SQ.M.)

Whilst every attempt has been made to ensure the accuracy of the floor plan contained here, measurements of doors, windows, rooms and any other items are approximate and no responsibility is taken for any error, omission, or mis-statement. This plan is for illustrative purposes only and should be used as such by any prospective purchaser. The services, systems and appliances shown have not been tested and no guarantee as to their operability or efficiency can be given.
Made with Metropix ©2013



Office/Neg/Date



01308 863100

beaminsters@symondsandsampson.co.uk
Symonds & Sampson LLP
36, Hogshill Street,
Beaminster, Dorset DT8 3AA



Important Notice: Symonds & Sampson LLP and their clients give notice that they have no authority to make or give any representations or warranties regarding the property. These particulars do not form part of any offer or contract and must not be relied upon as statements of fact. Some descriptions and images may have been AI-assisted; while reviewed for accuracy, interested parties should verify key details through inspection or by contacting our agents. All measurements and distances are approximate. Text, photographs, and plans are for guidance only and may not be comprehensive. It should not be assumed that the property has all necessary planning or regulatory consents, and no services, equipment, or facilities have been tested. No investigations have been made into pollution or contamination; purchasers must make their own enquiries. The property is sold subject to all existing wayleaves, easements, and rights of way (public or private), whether mentioned or not. Vendors are not required to define such rights.

SALES | LETTINGS | AUCTIONS | FARMS & LAND | COMMERCIAL | NEW HOMES | PLANNING & DEVELOPMENT