

Location:

Creswick Road is located within a 15 minute walk of Acton Main Line, the Crossrail station, giving direct access to central London on the Elizabeth Line, along with National Rail connections. It's also a short walk from Acton Town station for the Piccadilly Line and Ealing Common for the District and Piccadilly Lines.

Key points:

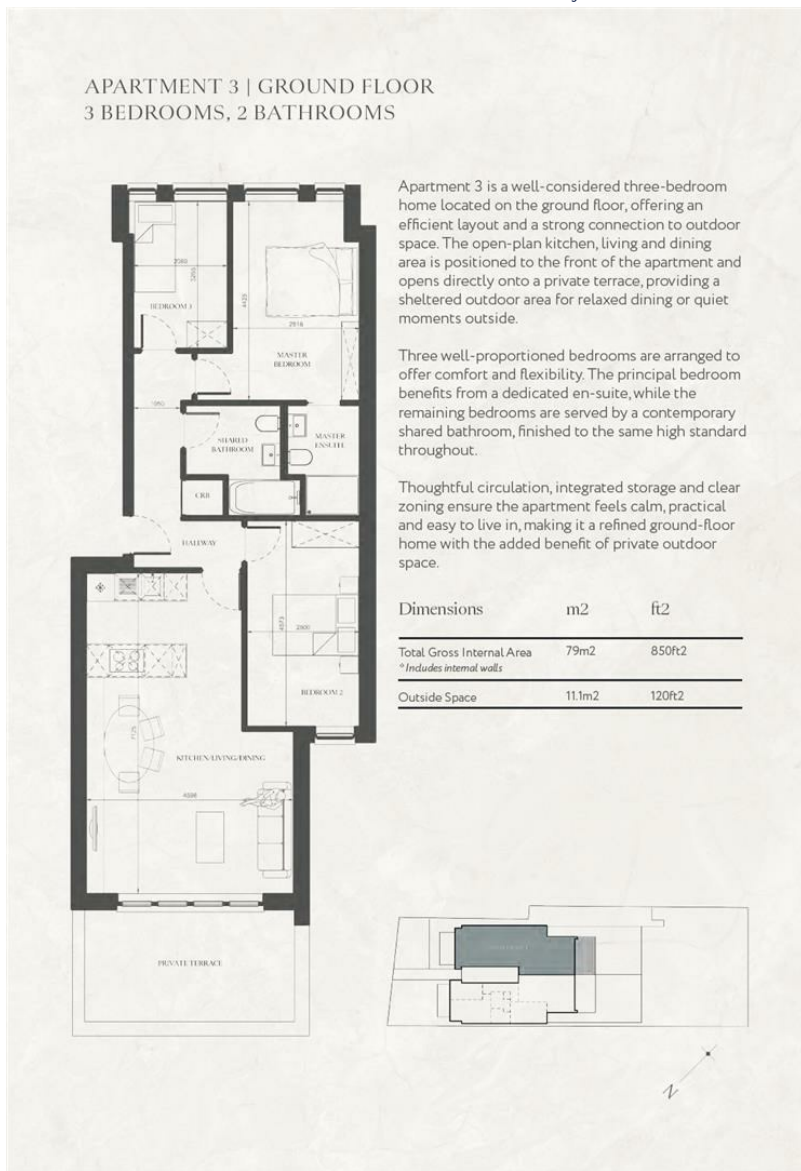
- Three Double Bedrooms
- 10 Year Structural Warranty
- Private South/ West Facing Terrace
- Underfloor Heating Throughout
- Two Bathrooms
- Siemens Appliances
- Bespoke Joinery TV/ Vanity Units and Wardrobes
- Bespoke Italian Kitchens
- Short Walk To Elizabeth Line
- Great For Families For Professional Buyers

Do Better:

Acton
sales@astonrowe.co.uk

57-59 Churchfield Road,
Acton, London, W3 6AY

020 8992 3600



£799,950

Creswick Road, Acton W3 9HF

Energy Efficiency Rating		Environmental Impact (CO ₂) Rating	
Current	Potential	Current	Potential

Energy Efficiency Rating scale (A-G) and Environmental Impact (CO₂) Rating scale (A-G) are shown. The current ratings are blank, indicating they are not yet determined.

- 1 Reception Rooms
- 3 Bedrooms
- 2 Bathrooms



A new development of 8 boutique apartments in the heart of Acton. Fronting a leafy tree-lined road in the London Borough of Ealing, Creswick Residences combines the best of contemporary British architecture with highly functional interiors. Perfect choice for those who want to enjoy London's more traditional character but with high quality design of brand new construction, by a leading local developer.

This is a bespoke large three bedroom, two bathroom ground floor apartment set over 850 sq ft with a private South/West-facing patio terrace, perfect for entertaining.

Constructed with a high specification, and use of quality materials expertly crafted with the utmost care and consideration to detail makes each apartment distinctive and exclusive. Spatial awareness is one of the key elements of our design ensuring well flowing and zoned areas in all apartments.

General Features includes wide-plank white washed oak floors throughout, aluminum windows and doors, underfloor heating, high ceilings and excellent acoustic insulation are features throughout. There are bespoke joinery TV and dining areas, built in wardrobes and vanity units delivered to a high standard.

Kitchens are Italian bespoke crafted joinery, with Quartz worktops, full height splash backs and elegant recessed spotlights, Siemens appliances, ceramic hobs and Lusso taps.

The current owner says:

This property has been delivered with no expense spared, and the developer has really thought and understood the requirements of the end user, and delivered a quality home to suit those needs. It needs to be viewed to be appreciated.

What's better:

This contemporary development has been finished with a stunning colour palette that feels inviting and homely with lots of modern features for a buyers enjoyment. We particularly like the high ceilings, underfloor heating and bespoke joinery that make these inviting homes.

