



10a Nightingale Road, London

London

£2,350 PCM



10a Nightingale Road

London, London

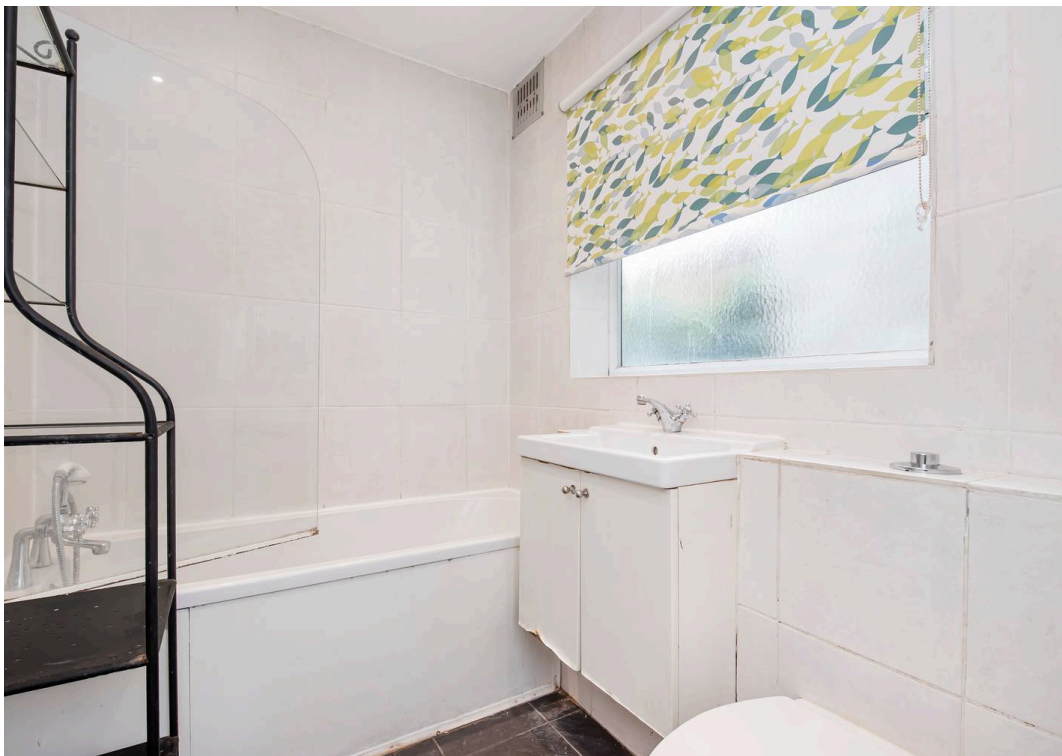
A charming two-bedroom ground-floor flat with a large private garden.

Council Tax band: B

Tenure: Leasehold

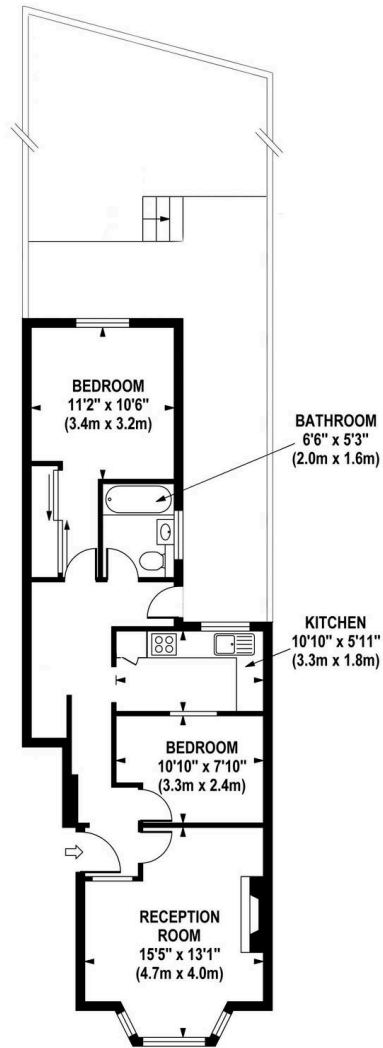
EPC Energy Efficiency Rating: C

EPC Environmental Impact Rating: C



NIGHTINGALE ROAD

Approximate Gross Internal Area
655 sq ft / 60.85 sq m



**GROUND FLOOR
GROSS INTERNAL
FLOOR AREA 655 SQ FT**

Although every attempt has been made to ensure accuracy, all measurements are approximate and no responsibility is taken for any error, omission, or mid-statement. This floor plan is for illustrative purposes only and not to scale. Measured in accordance to RICS standards.
GB PRO PHOTOS



Garrison Estates

20 College Parade, Salusbury Road, Queens Park - NW6 6RN

020 4511 4820 • contact@garrisonestates.co.uk • www.garrisonestates.co.uk/