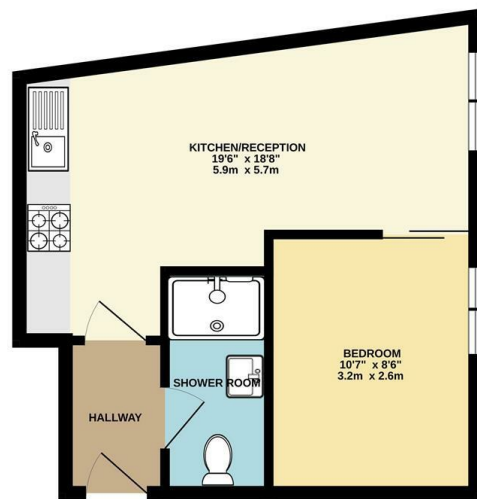




GROUND FLOOR



While every attempt has been made to ensure the accuracy of the floorplan contained herein, measurements of plots, buildings, rooms and any other items are approximate and no responsibility is taken for any error, omission or misstatement. This plan is for illustrative purposes only and does not constitute an offer of any property. The agent has not had the sight of the title documents. A buyer is advised to obtain verification from their solicitors. Map data ©2026

Council: Redbridge | Council Tax Band: B | Floor Area: sq ft

Energy Efficiency Rating		Current	Potential
Very energy efficient - lower running costs			
(92 plus) A			
(81-91) B			
(69-80) C		74	74
(55-68) D			
(39-54) E			
(21-38) F			
(1-20) G			
Not energy efficient - higher running costs			
England & Wales	EU Directive 2002/91/EC		



The Agent has not tested any apparatus, equipment, fixtures and fittings or services and so cannot verify that they are in working order or fit for the purpose. A buyer is advised to obtain verification from their solicitor or surveyor. References to the tenure of a property are based on information supplied by the seller. The agent has not had the sight of the title documents. A buyer is advised to obtain verification from their solicitors.

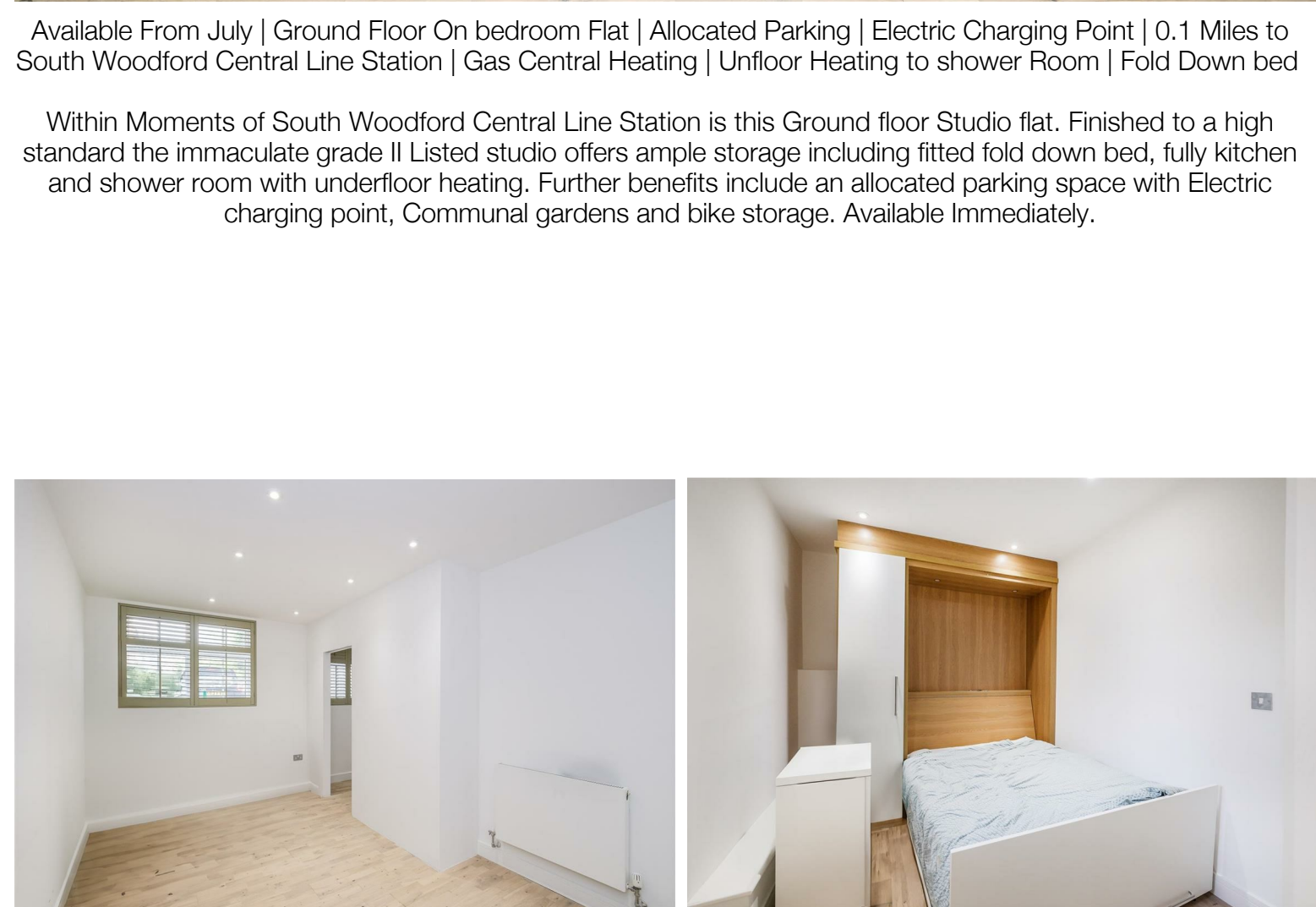


Glebelands Court, South Woodford, E18 2AB
£1,525 Per Month

Bedrooms: 1 | Reception Rooms: 1 | Bathrooms: 1



Request a Viewing: **0208 530 3333** Email: southwoodford@wearechurchills.co.uk



Available From July | Ground Floor On bedroom Flat | Allocated Parking | Electric Charging Point | 0.1 Miles to South Woodford Central Line Station | Gas Central Heating | Unfloor Heating to shower Room | Fold Down bed

Within Moments of South Woodford Central Line Station is this Ground floor Studio flat. Finished to a high standard the immaculate grade II Listed studio offers ample storage including fitted fold down bed, fully kitchen and shower room with underfloor heating. Further benefits include an allocated parking space with Electric charging point, Communal gardens and bike storage. Available Immediately.