



Dale Street, London, W4
Guide Price £1,100,000

WHITMAN & CO.

SALES · LETTINGS · COMMERCIAL

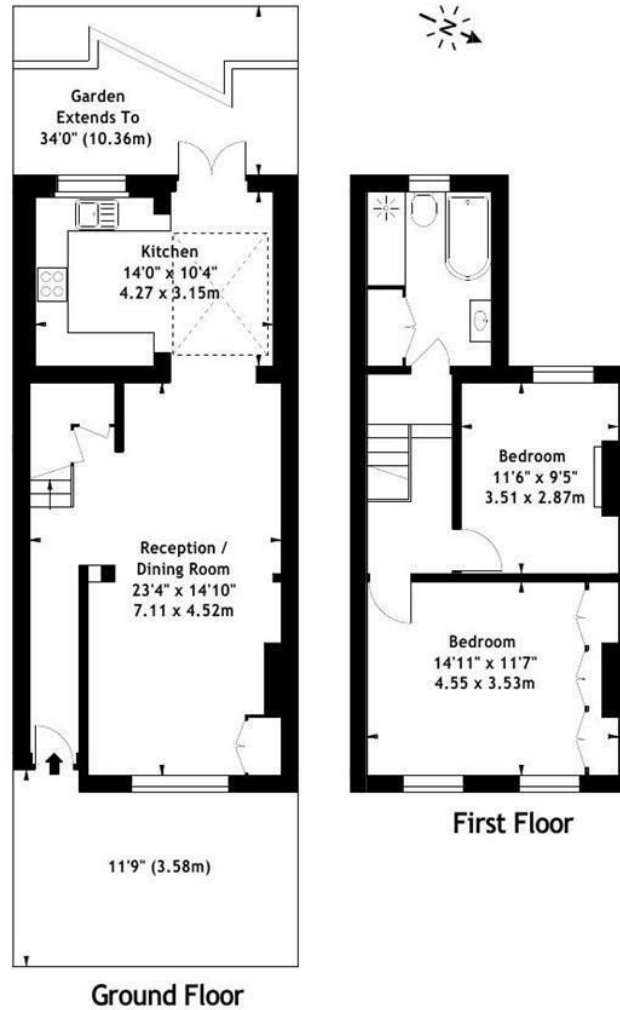


A delightful Victorian cottage in a prime position in the sought-after Glebe Estate, moments from Chiswick High Road and Devonshire Road's extensive facilities. Presented in good condition throughout with future potential to extend into the loft subject to the necessary consents, the accommodation comprises two double bedrooms, a family bathroom with separate shower, a 23'4" open plan through reception room, a fitted kitchen/breakfast room and a lovely 34' landscaped west-facing garden. Ideally situated moments from Chiswick High Road, Turnham Green Terrace, and Devonshire Road with its cafes, bars, boutiques, shops, and restaurants (including the Michelin-starred La Trompette). Local transport links include Turnham Green tube station, numerous local bus routes and vehicular access via A4/M4 to central London, Heathrow and the West. No onward chain.



Dale Street, W4

Approx. Gross Internal Area
936 Sq Ft - 86.97 Sq M



Measured in accordance with RICS guidelines. Every attempt is made to ensure accuracy, however all measurements are approximate. This floor plan is for illustrative purposes only and is not to scale.



© Datography Ltd 2017
Photographs * Floorplans * Virtual Tours
Tel: 0845 643 4401 www.datography.com

- Delightful Victorian cottage
- 34' West facing garden
- Close to shops, cafes and restaurants

- Sought after location
- 23'4 Through reception room
- No onward chain

Tenure - Freehold
Local Authority - Hounslow
Council Tax - Band F

