



Flat 5 410 Seven Sisters Road, London, Greater London, N4 2LX

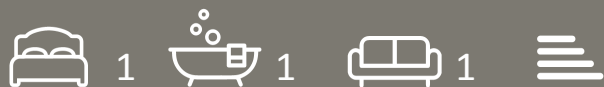
£2,000 Per Month

- Adjacent to Finsbury Park
- Close to public transport
- Manor House Tube
- Close to Beautiful Park
- Finsbury Park Tube
- Under Floor Heating
- Close to Local Bars and Shops
- Fitted Kitchen

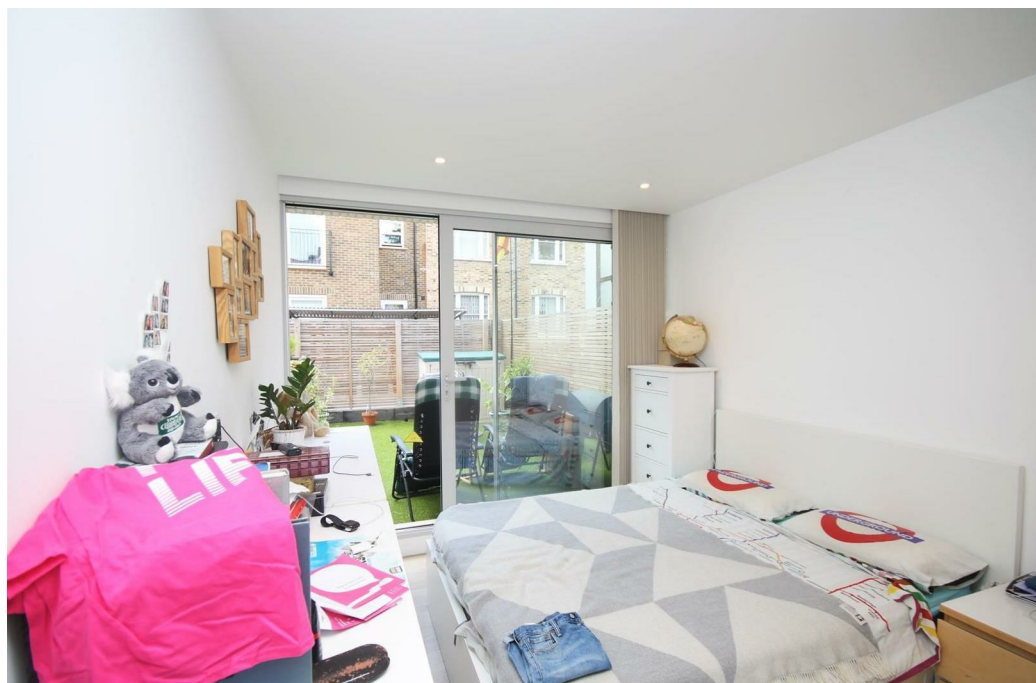
Flat 5 410 Seven Sisters Road, London N4 2LX

Modern one-bedroom apartment located within this secure development 0.3 miles to Finsbury Park and Manor House Tube stations. The property benefits from a spacious open plan lounge and kitchen leading to a private patio space with plenty of natural light. The property includes a modern fully tiled bathroom with bath and shower facilities and spacious double bedroom with built in storage.

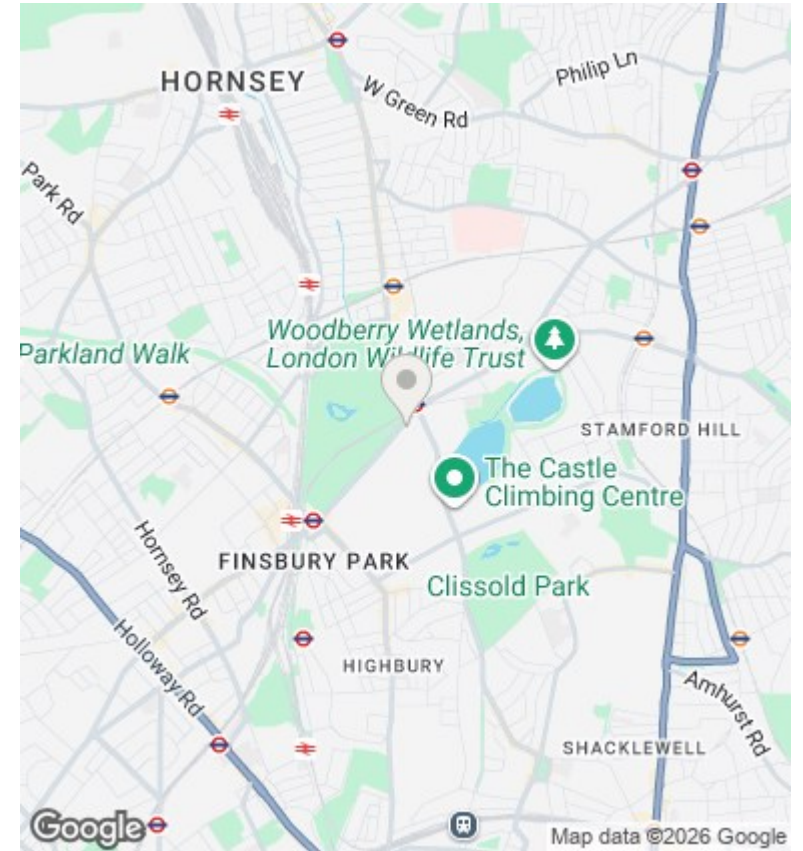
Located within a short walk of Manor House tube station and 6 minutes from Finsbury Park tube with the Piccadilly and Victoria Lines, as well as mainline rail links and a variety of bus services to the West End, The City and Canary Wharf. Open spaces on your door step at Finsbury Park and Clissold Park.



Council Tax Band: C



Directions



Viewings

Viewings by arrangement only. Call 02073593191 to make an appointment.

Council Tax Band

C

Energy Efficiency Rating		
	Current	Potential
Very energy efficient - lower running costs		
(92 plus) A		
(81-91) B		
(69-80) C		
(55-68) D		
(39-54) E		
(21-38) F		
(1-20) G		
Not energy efficient - higher running costs		
England & Wales	EU Directive 2002/91/EC	

Full description

Modern one-bedroom apartment located within this secure development 0.3 miles to Finsbury Park and Manor House Tube stations. The property benefits from a spacious open plan lounge and kitchen leading to a private patio space with plenty of natural light. The property includes a modern fully tiled bathroom with bath and shower facilities and spacious double bedroom with built in storage.

Located within a short walk of Manor House tube station and 6 minutes from Finsbury Park tube with the Piccadilly and Victoria Lines, as well as mainline rail links and a variety of bus services to the West End, The City and Canary Wharf. Open spaces on your door step at Finsbury Park and Clissold Park.





