

**Dorien Road
Raynes Park, SW20 8EL**

OFF MARKET EXCLUSIVE £1,000,000 Freehold



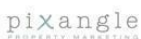
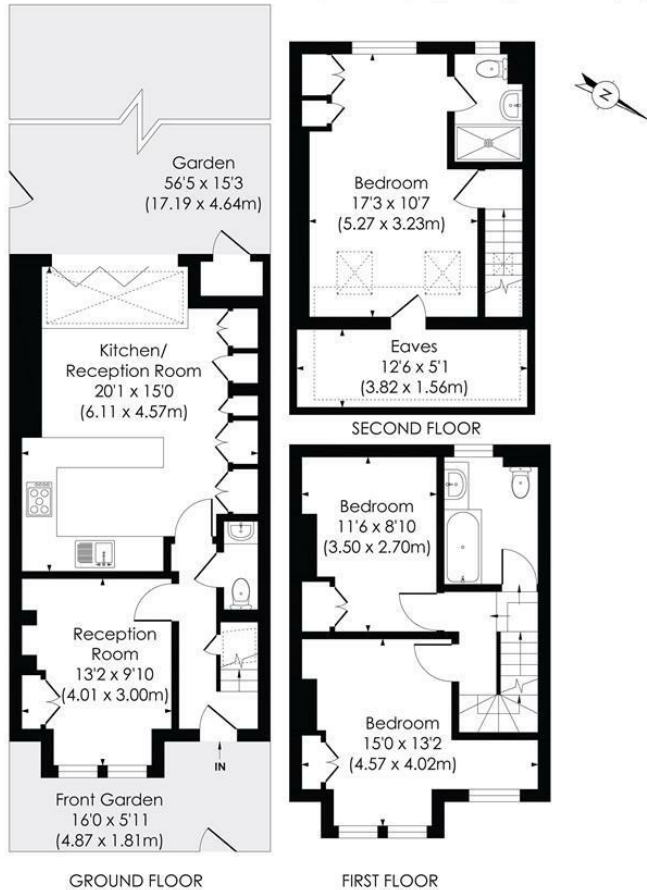
This beautifully presented THREE DOUBLE BEDROOM, TWO BATHROOM, fully extended End of Terrace, Edwardian Apostle House has an exceptional 56'5 ft West facing garden, stunning open plan kitchen/family room and planning permission to extend. There is also a charming, separate front reception room, a downstairs W.C, two double bedrooms on the first floor with built in wardrobes, a modern family bathroom and a fantastic master bedroom with en suite shower room. Easy access to both Raynes Park and Wimbledon Chase Stations and shops.

DORIEAN ROAD, SW20

Approx. Gross Internal Floor Area

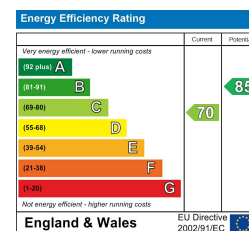
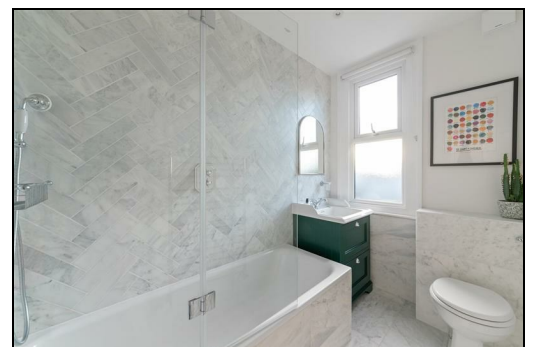
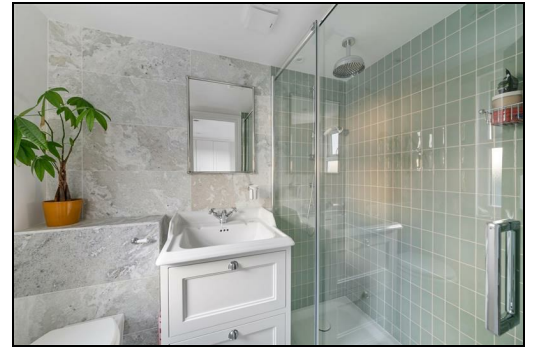
1160 Sq. ft/107.78 Sq. m (Including Reduced Height)

1044 Sq. ft/96.98 Sq. m (Excluding Reduced Height)



This floor plan has been prepared for the purpose of illustration only in accordance with the latest RICS code of measuring practice and is not to scale. All measurements and areas are approximate and whilst every effort has been made to ensure the accuracy of the plan contained here, no responsibility is taken for any error, omission or misstatement.

- Three Double Bedroom - Two Bathroom
- Attractive Edwardian End Of Terrace Apostle House
- 56'5 ft West Facing Garden With Side Access
- Beautiful Open Plan Kitchen/Family Room
- Separate Front Reception Room - Downstairs W.C
- Easy Access To Raynes Park And Wimbledon Chase
- Superb Master Bedroom With En Suite Shower Room
- Planning Permission Granted For 6m Rear Extension
- EPC - C
- Council Tax Band - E



For Free Mortgage Quote and Best Mortgage Rates, call Ellisons Mortgage Advisor on 0208 944 9595



Although these particulars are believed to be correct, their accuracy is not guaranteed and they do not form part of any contract.

Celebrating 30 years of successful Sales and Lettings in Merton

